



Air Pollution Control Board

| | |
|------------------|------------|
| Greg Cox | District 1 |
| Dianne Jacob | District 2 |
| Pam Slater-Price | District 3 |
| Ron Roberts | District 4 |
| Bill Horn | District 5 |

COMPLIANCE ADVISORY

AIRBORNE TOXIC CONTROL MEASURE (ATCM) FOR PORTABLE DIESEL-FUELED ENGINES

On February 26, 2004, CARB adopted the Airborne Toxic Control Measure (ATCM) for Diesel Particulate Matter from Portable Engines Rated at 50 Horsepower and Greater (Section 93116, Title 17, California Code of Regulations). This regulation is specifically designed to reduce particulate emissions from portable diesel-fueled engines. The ATCM became effective on March 11, 2005. The San Diego County Air Pollution Control District (District) will now begin implementing all aspects of the ATCM.

Existing regulations require portable diesel-fueled engines greater than 50 brake horsepower (bhp) to have either a State registration or a District Permit to Operate. The ATCM requires that after January 1, 2006, any portable engine (new or pre-existing) being permitted or registered must meet the most stringent Tier emission standards in effect at the time of registration or permitting. Additionally, CARB's Statewide Portable Equipment Registration Program (PERP) was recently amended (see attached summary) to allow previously ineligible (uncertified) portable engines to be able to register in the PERP if they qualify as a resident engine (i.e., one which resided in California at any time during the period of July 1, 2003, to July 1, 2004). **However, this option will only be effective until December 31, 2005.**

The new ATCM includes the following:

Applicability All portable diesel-fueled engines having a maximum rated horsepower of 50 brake horsepower (bhp) and greater, including auxiliary engines on mobile equipment.

Exemptions From All Requirements Any engine used to propel mobile equipment or a motor vehicle of any kind.

Any portable engine using an alternative fuel (i.e., gasoline, natural gas, propane, liquid petroleum gas, hydrogen, ethanol, or methanol).

Dual-fuel diesel pilot engines that use an alternative fuel or an alternative diesel fuel.

Military tactical support equipment.

New agricultural or construction engines less than 175 bhp.

Portable diesel-fueled engines operated at airports that satisfy certain requirements.

Requirements Existing regulations require portable diesel-fueled engines greater than 50 bhp to have either a State registration or a District Permit to Operate. The ATCM requires that after January 1, 2006, any portable engine (new or pre-existing) being permitted or registered must meet the most stringent Tier emission standards in effect at the time of registration or permitting (i.e., Tier 2, Tier 3, or Tier 4)¹. Prior to January 1, 2006, non-tiered engines may be registered or permitted.

All portable diesel-fueled engines are required to use CARB diesel fuel, a verified alternative diesel fuel, or CARB diesel with verified fuel additives.

By January 1, 2010, portable diesel-fueled engines permitted or registered before January 1, 2006, are required to be certified to meet Tier 1, Tier 2, or Tier 3 diesel nonroad engine emission standards. This does not apply to emergency engines, low-use engines (operating less than 80 hours per calendar year), or, with State or District approval, lattice boom crane engines.

By January 1, 2010, emergency or low-use portable diesel-fueled engines permitted or registered before January 1, 2006, are required to be certified to meet Tier 1, Tier 2, or Tier 3 diesel nonroad engine emission standards. Alternatively, the engine may be replaced by a certified Tier 4 engine within two years of the availability of such engines in the marketplace.

continued

Requirements continued Beginning January 1, 2013, one or more portable diesel-fueled engines under common ownership, excluding emergency and other specified engines, are required to meet fleet average diesel particulate matter emission standards. Successively more stringent fleet average emission standards become effective in 2017 and 2020.

Beginning January 1, 2020, all portable diesel-fueled emergency engines, low-use engines, and previously exempt lattice boom crane engines are required to be certified to meet Tier 4 emission standards or have a verified emission control strategy that achieves 85% or more reduction in diesel particulate matter.

¹ Tier 1, 2, 3, and 4 refer to nonroad engine emission standards promulgated by ARB and U.S. EPA for newly manufactured engines pursuant to 40 CFR Part 89 or Title 13 of the California Code of Regulation. Each successive Tier represents more stringent emission standards and the requirements are phased-in over time with the Tier 1 engine standards becoming effective for some engines manufactured in 1996 and becoming effective for all engines by 2000. Tier 2 engine standards are phased in for engines manufactured beginning in 2001 and becomes effective for all engines by 2006. Similarly, Tier 3 engines are phased in for engines manufactured beginning in 2006, and Tier 4 engines are phased in for engines manufactured beginning in 2011.

Recordkeeping Requirements Requires specified records be kept, for certain types of engines that adjust the fleet average emission standard and certain engines excluded from the fleet average emission standard. The recordkeeping begins January 1, 2012, for most engines. However, engines using alternative fuels that are added to a fleet prior to January 1, 2009, must begin keeping records by January 1, 2008.

Monitoring Equipment Requires installation of non-resettable hour meters on all engines subject to recordkeeping by the ATCM. The hour meter must be installed by January 1, 2012, for most engines and by January 1, 2008, for engines using an alternative fuel that are added to a fleet before January 1, 2009.

Reporting Requirements Requires specified compliance reports be submitted beginning March 1, 2011.

Copies of the ATCM may be obtained from the Air Resources Board website at <http://www.arb.ca.gov/regact/porteng/fro.pdf>. If you have any questions concerning the ATCM, please contact Jorge Lopez at (858) 650-4551 or (858) 586-2682 (effective November 7, 2005) or via e-mail at Jorge.Lopez@sdcounty.ca.gov, Cara Bandera at (858) 650-4592 or (858) 586-2751 (effective November 7, 2005) or via e-mail at Cara.Bandera@sdcounty.ca.gov, or Steve Moore at (858) 650-4598 or (858) 586-2750 (effective November 7, 2005) or via e-mail at Steve.Moore@sdcounty.ca.gov.

JL:ls
10/27/05



Air Pollution Control Board

| | |
|------------------|------------|
| Greg Cox | District 1 |
| Dianne Jacob | District 2 |
| Pam Slater-Price | District 3 |
| Ron Roberts | District 4 |
| Bill Horn | District 5 |

December 23, 2005

COMPLIANCE ADVISORY

SECOND NOTICE OF THE DECEMBER 31, 2005 DEADLINE FOR REGISTERING EXISTING PORTABLE DIESEL-FUELED ENGINES GREATER THAN 50 BHP THAT ARE NOT CURRENTLY REGISTERED OR PERMITTED

On February 26, 2004, California Air Resources Board (CARB) adopted the Airborne Toxic Control Measure (ATCM) for Diesel Particulate Matter from Portable Engines Rated at 50 Horsepower and Greater (§93116, Title 17, California Code of Regulations). The ATCM became effective on March 11, 2005.

One of the ATCM requirements is that existing portable engines that are **NOT** currently permitted or registered with CARB or a local district must do so by **December 31, 2005**. Additionally, CARB's Statewide Portable Equipment Registration Program (PERP) was amended to allow previously ineligible (uncertified) portable engines to be able to register in the PERP if they qualify as a resident engine (i.e., one that resided in California at any time during the period of July 1, 2003 to July 1, 2004). **However, this will only be an option until December 31, 2005. After that date, any portable engine not currently permitted or registered with the state or district must meet the most stringent emission standards in effect at the time of registration or permitting.** This will likely mean the purchase of a new engine to comply with the ATCM.

Engines may be registered in either the statewide PERP or the District's local registration program (Rule 12.1) or permitted with the District. Engines registered in the PERP may operate throughout California. Additional information and forms for the statewide PERP may be obtained from the ARB website at www.arb.ca.gov/portable/perp/perp.htm. Please be aware that not all portable engines qualify for the District's registration program or for permitting by the District. However, all portable resident engines will qualify for the statewide PERP. Additional information and forms for the District's portable equipment registration program may be obtained from the District website at www.sdapcd.org/permits. **Application forms and appropriate fees must be postmarked by December 31, 2005, for acceptance as existing engines to either ARB or the District portable equipment programs.**

Copies of the ATCM may be obtained from the ARB website at www.arb.ca.gov/regact/porteng/fro.pdf. The District is open to the public by appointment only December 26, 2005 through December 30, 2005. For assistance or questions, contact Scott Underhill at (858) 586-2653, Steven Moore at (858) 586-2750, or Evariste Haury at (858) 586-2745. The District will be closed December 31, 2005 through January 2, 2006. Further information regarding the state programs may be obtained by contacting the Statewide Portable Equipment Registration Information Line at (916) 324-5869.

SM:CB:ap

12/22/05

California Air Resources Board (ARB)
Off-Road Compression Ignition Engine Standards – g/bhp-hr (g/kwh)

| Engine Power | Tier | Year | CO | HC | NMHC + NOx | NOx | PM |
|---|--------|---------------|------------|----------------|------------|------------|--------------|
| hp < 11 (kW < 8) | Tier 1 | 2000 | 6.0 (8.0) | - | 7.8 (10.5) | - | 0.75 (1.0) |
| | Tier 2 | 2005 | 6.0 (8.0) | - | 5.6 (7.5) | - | 0.6 (0.8) |
| | Tier 4 | 2008 | 6.0 (8.0) | - | 5.6 (7.5) | - | 0.3 (0.4) |
| 11 ≤ hp < 25 (8 ≤ kW < 19) | Tier 1 | 2000 | 4.9 (6.6) | - | 7.1 (9.5) | - | 0.6 (0.8) |
| | Tier 2 | 2005 | 4.9 (6.6) | - | 5.6 (7.5) | - | 0.6 (0.8) |
| | Tier 4 | 2008 | 4.9 (6.6) | - | 5.6 (7.5) | - | 0.3 (0.4) |
| 25 ≤ hp < 50 (19 ≤ kW < 37) | Tier 1 | 2000 | 4.1 (5.5) | - | 7.1 (9.5) | - | 0.6 (0.8) |
| | Tier 2 | 2004 | 4.1 (5.5) | - | 5.6 (7.5) | - | 0.45 (0.6) |
| | Tier 4 | 2008 | 4.1 (5.5) | - | 5.6 (7.5) | - | 0.22 (0.3) |
| | | 2013 | 4.1 (5.5) | - | 3.5 (4.7) | - | 0.022 (0.03) |
| 50 ≤ hp < 100 (37 ≤ kW < 75) | Tier 1 | 2000 | - | - | - | 6.9 (9.2) | - |
| | Tier 2 | 2004 | 3.7 (5.0) | - | 5.6 (7.5) | - | 0.3 (0.4) |
| | Tier 3 | 2008 | 3.7 (5.0) | - | 3.5 (4.7) | - | 0.3 (0.4) |
| 50 ≤ hp < 75 (37 ≤ kW < 56) | Tier 4 | 2008 | 3.7 (5.0) | - | 3.5 (4.7) | - | 0.22 (0.3) |
| | | 2013 | 3.7 (5.0) | - | 3.5 (4.7) | - | 0.022 (0.03) |
| 100 ≤ hp < 175 (75 ≤ kW < 130) | Tier 1 | 2000 | - | - | - | 6.9 (9.2) | - |
| | Tier 2 | 2003 | 3.7 (5.0) | - | 4.9 (6.6) | - | 0.22 (0.3) |
| | Tier 3 | 2007 | 3.7 (5.0) | - | 3.0 (4.0) | - | 0.22 (0.3) |
| 75 ≤ hp < 175 (56 ≤ kW < 130) | Tier 4 | 2012 | 3.7 (5.0) | 0.14 (0.19) | - | 0.3 (0.4) | 0.015 (0.02) |
| 175 ≤ hp < 300 (130 ≤ kW < 225) | Tier 1 | 1996 | 8.5 (11.4) | 1.0 (1.3) | - | 6.9 (9.2) | 0.4 (0.54) |
| | Tier 2 | 2003 | 2.6 (3.5) | - | 4.9 (6.6) | - | 0.15 (0.2) |
| | Tier 3 | 2006 | 2.6 (3.5) | - | 3.0 (4.0) | - | 0.15 (0.2) |
| 300 ≤ hp < 600 (225 ≤ kW < 450) | Tier 1 | 1996 | 8.5 (11.4) | 1.0 (1.3) | - | 6.9 (9.2) | 0.4 (0.54) |
| | Tier 2 | 2001 | 2.6 (3.5) | - | 4.8 (6.4) | - | 0.15 (0.2) |
| | Tier 3 | 2006 | 2.6 (3.5) | - | 3.0 (4.0) | - | 0.15 (0.2) |
| 600 ≤ hp < 750 (450 ≤ kW < 560) | Tier 1 | 1996 | 8.5 (11.4) | 1.0 (1.3) | - | 6.9 (9.2) | 0.4 (0.54) |
| | Tier 2 | 2002 | 2.6 (3.5) | - | 4.8 (6.4) | - | 0.15 (0.2) |
| | Tier 3 | 2006 | 2.6 (3.5) | - | 3.0 (4.0) | - | 0.15 (0.2) |
| 175 ≤ hp < 750 (130 ≤ kW < 560) | Tier 4 | 2011- 2014 | 2.6 (3.5) | 0.14 (0.19) | - | 0.3 (0.4) | 0.015 (0.02) |
| hp ≥ 750 (kW ≥ 560) | Tier 1 | 2000 | 8.5 (11.4) | 1.0 (1.3) | - | 6.9 (9.2) | 0.4 (0.54) |
| | Tier 2 | 2006 | 2.6 (3.5) | - | 4.8 (6.4) | - | 0.15 (0.2) |
| hp ≥ 750 (kW ≥ 560) generator sets | Tier 4 | 2011- 2014 | 2.6 (3.5) | - | 0.3 (0.4) | 0.5 (0.67) | 0.07 (0.1) |
| | | 2015 | 2.6 (3.5) | - | 0.14(0.19) | 0.5 (0.67) | 0.022 (0.03) |
| hp ≥ 750 (kW ≥ 560) all other engines | Tier 4 | 2011- 2014 | 2.6 (3.5) | - | 0.3 (0.4) | 2.6 (3.5) | 0.07 (0.1) |
| | | 2015 | 2.6 (3.5) | - | 0.14(0.19) | 2.6 (3.5) | 0.03 (0.04) |

1 – The standards are for carbon monoxide (CO), hydrocarbons (HC), non-methane hydrocarbons, (NMHC), nitrogen oxides (NOx), and particulate matter (PM) expressed in units of grams per brake horsepower per hour (g/bhp-hr) and grams per kilowatt per hour (g/kw-hr).

2 – Power is maximum rated power expressed in horsepower (hp) or kilowatts (kw).

HOW TO APPLY TO PERP:

- 1) Obtain application forms and other information at www.arb.ca.gov/perp/perp.htm
- 2) Complete forms and supply all requested information
- 3) Calculate the fees and enclose your payment
- 4) Send to: ARB / PERP
P.O. Box 2038
1001 I Street
Sacramento, CA 95812
- 5) If you need help, call: (916) 324-5869
or e-mail portable@arb.ca.gov

REGULATIONS:

For the text of the PERP regulation, visit:
www.arb.ca.gov/regact/portreg/portreg.pdf

California Air Resources Board
PERP
P.O. Box 2038
Sacramento, CA 95812



STATEWIDE PORTABLE EQUIPMENT REGISTRATION PROGRAM (PERP) CHANGES

California Environmental Protection Agency

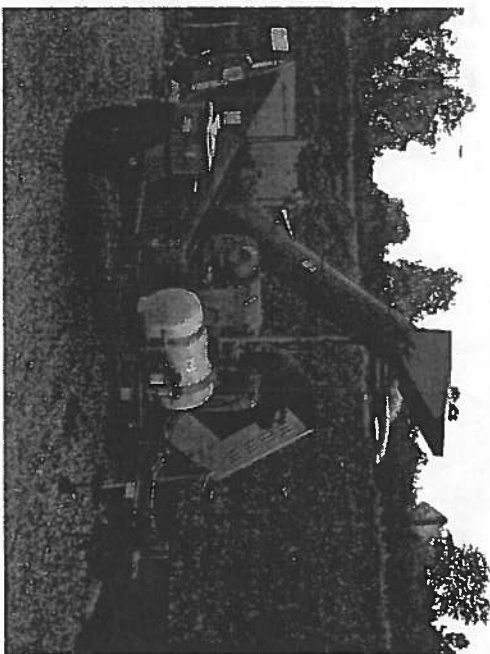


INTRODUCTION

On February 26, 2004, ARB adopted Amendments to the Statewide Portable Equipment Registration Program (PERP).

The amended provisions are effective on September 1, 2005.

On this date, we will begin accepting applications under the new amendments. The amendments are summarized in this pamphlet.



- Applicability
 - PERP-registered generators may not provide power to the electric utility grid, stationary sources, or stationary equipment except during:
 - an unforeseen loss of power
 - maintenance and repair operations
 - electrical upgrade operations
 - operations where specific frequency or current requirements are not available remote operations
 - Equipment units and associated engines that are part of a permitted stationary source are ineligible
 - Any unit losing its PERP eligibility has 90 days to apply for a district permit upon notification
- A Resident engine is one which resided in California at any time during the period of July 1, 2003 to July 1, 2004
- After December 31, 2005, only certified engines meeting the most stringent off-road standards can apply
- Reminder: After January 1, 2010, portable diesel-fueled engines registered in the program must be certified engines

Fees

- New Registration Fees
 - \$270 for a 3-year registration
- Renewal Fees
 - \$225 for a 3-year renewal
- New Program Participants pay an additional \$100 per unit until December 31, 2005
- Administrative fees, such as change of ownership, sticker replacements, and modifications, have increased -- for details, go to:

www.arb.ca.gov/perp/perp.htm

- Requirements
 - Until December 31, 2005 an uncertified engine can register in PERP only if it qualifies as a resident engine

Recordkeeping

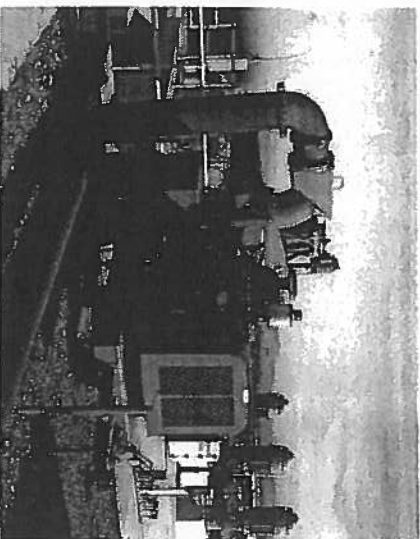
- Annual reports no longer need to be submitted to ARB
- Daily records must be maintained for five years and be available upon request
- Fuel meters are required for all newly registered resident engines that are required to maintain daily records of fuel use

Note: certified engines are not required to maintain daily records

Miscellaneous Changes

- Identical replacement will be allowed for mechanical breakdown only
- Non-operational registrations must be converted to "operational", or the registration will be cancelled
- A five-year renewal cycle option has been added

For more information on PERP, contact Mike Guzzetta at (916) 322-6025 or via e-mail at mguzzett@arb.ca.gov.



HOW DO I APPLY FOR A REGISTRATION?

- 1) Obtain application forms and other information at: www.arb.ca.gov/perp/perp.htm
- 2) Complete forms thoroughly.
- 3) Calculate the fees and enclose your payment.
- 4) Send to: ARB / PERP
P.O. Box 2038
1001 I Street
Sacramento, CA 95812
- 5) If you need help, call: (916) 324-5869 or e-mail portable@arb.ca.gov

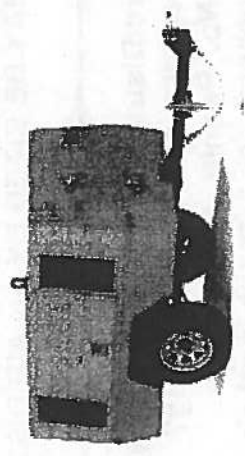
| | |
|----------------------|----------------------|
| Registration Number | Expiration Date |
| <input type="text"/> | <input type="text"/> |

STATEWIDE PORTABLE EQUIPMENT REGISTRATION REGULATION:
For the text of the PERP regulation, visit: www.arb.ca.gov/regact/portreg/portreg.pdf

For more information on PERP, contact Mike Guzzetta: (916) 322-6025 or via e-mail at mguzzett@arb.ca.gov.

California Air Resources Board
PERP
P.O. Box 2038
Sacramento, CA 95812

Registration and Permitting of Portable Engines and Equipment Units



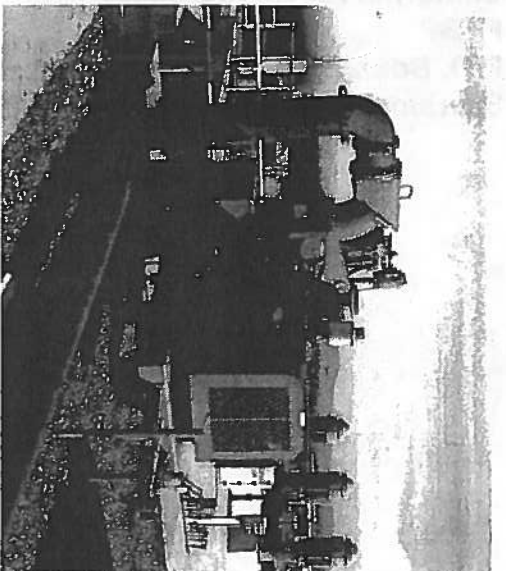
What You Need to Know

California Environmental Protection Agency
 **Air Resources Board**

www.arb.ca.gov/perp/perp.htm

Did you know that any portable engine, 50 horsepower or greater, may need a district permit or registration in the California Air Resources Board's (CARB) Statewide Portable Equipment Registration Program (PERP) to operate in California?

IF YOU DO NOT HAVE A PERMIT OR VALID PERP REGISTRATION, YOU MAY BE CITED BY AN AIR DISTRICT INSPECTOR!



1) Are District Permits and Statewide Registrations the same thing?

- No. Permits are issued in accordance with the local air district's rules and in most instances are only valid within the district's boundaries.
- PERP Registrations are issued by CARB and are valid statewide. PERP is a voluntary program that allows statewide operation of portable engines and associated equipment units without having to obtain multiple district permits.

2) How do I apply for a district permit?

- Permits are issued by local air districts. To find your district's contact information go to: www.arb.ca.gov/capcoal/roster.htm



3) Is there a deadline for registering non-certified portable engines in PERP?

- Yes. Applications for registration of portable engines that do not meet the current U.S. EPA off road standards, and which resided in California between July 1, 2003 and July 1, 2004, must be received by ARB no later than December 31, 2005.
- After that date, only applications for engines meeting the current U.S. EPA off road standards will be accepted.

4) How do I apply for a PERP registration?

- Registrations for the PERP program are issued by CARB. See the back panel of this brochure for information on obtaining application forms.

THE OWNERS/OPERATORS OF PORTABLE ENGINES THAT DO NOT MEET THE CURRENT U.S. EPA OFF ROAD STANDARDS WILL NOT BE ABLE TO REGISTER IN PERP AFTER DECEMBER 31, 2005

5) How long does the PERP Registration process take?

- For most engines, it typically takes from 2 to 4 weeks to process the application. Submit your applicator as early as possible.

6) What does PERP registration cost?

- New Participants- \$370 for a 3-year registration until December 31, 2005
- Existing Participants- \$270 for a 3-year registration.

7) Where can I get more information about PERP?

- Go on-line to view a fact sheet about the program and lists of eligible uses of portable engines and associated equipment units. The site is located at:

www.arb.ca.gov/perp/perp.htm

