



# Highlights on Statewide Strategies Benefitting Communities

Portside Environmental Justice Neighborhoods  
Steering Committee Meeting  
April 23, 2019

## Air Quality Agencies

### Federal



#### U.S. EPA

*Sets/enforces national air quality standards.  
Regulates interstate transportation.*



Trains



Ships



Planes

### State



#### CARB

*Regulates mobile sources of air pollution,  
greenhouse gases, and consumer products.*



Cars



Trucks



Buses

### Local



#### Local Air Districts

*Regulate stationary and  
local sources of air pollution.*



Factories

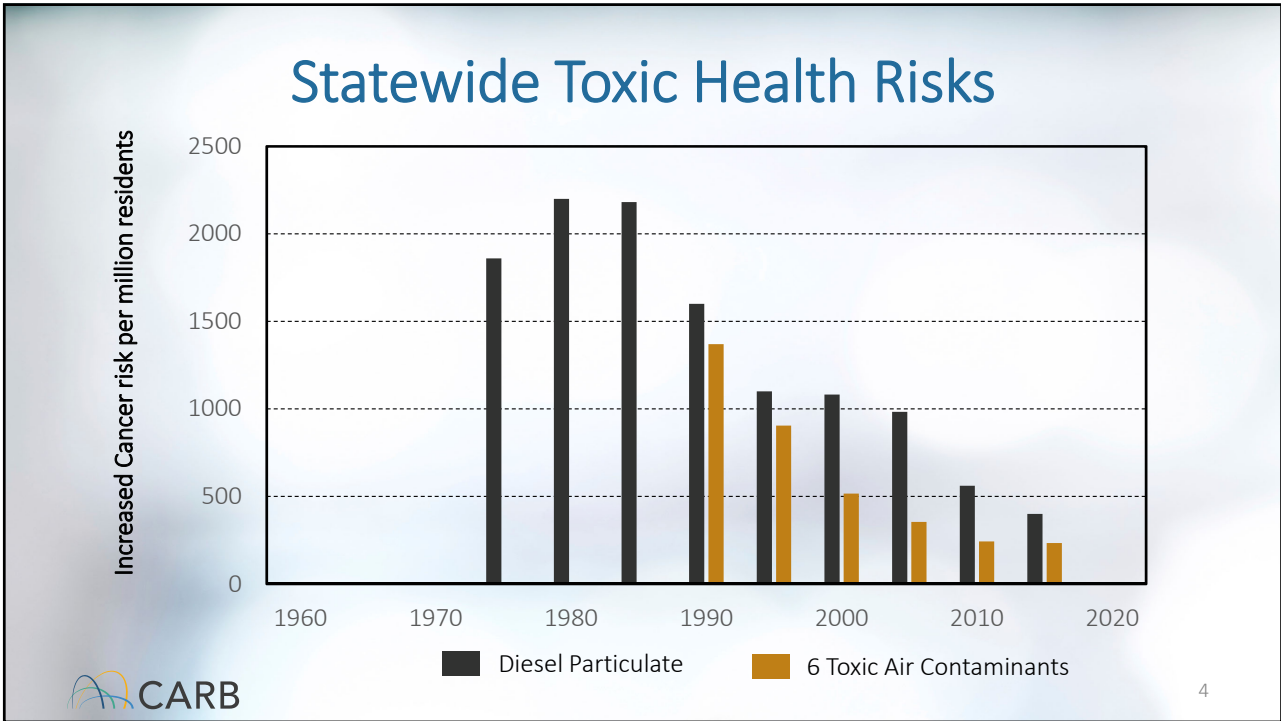
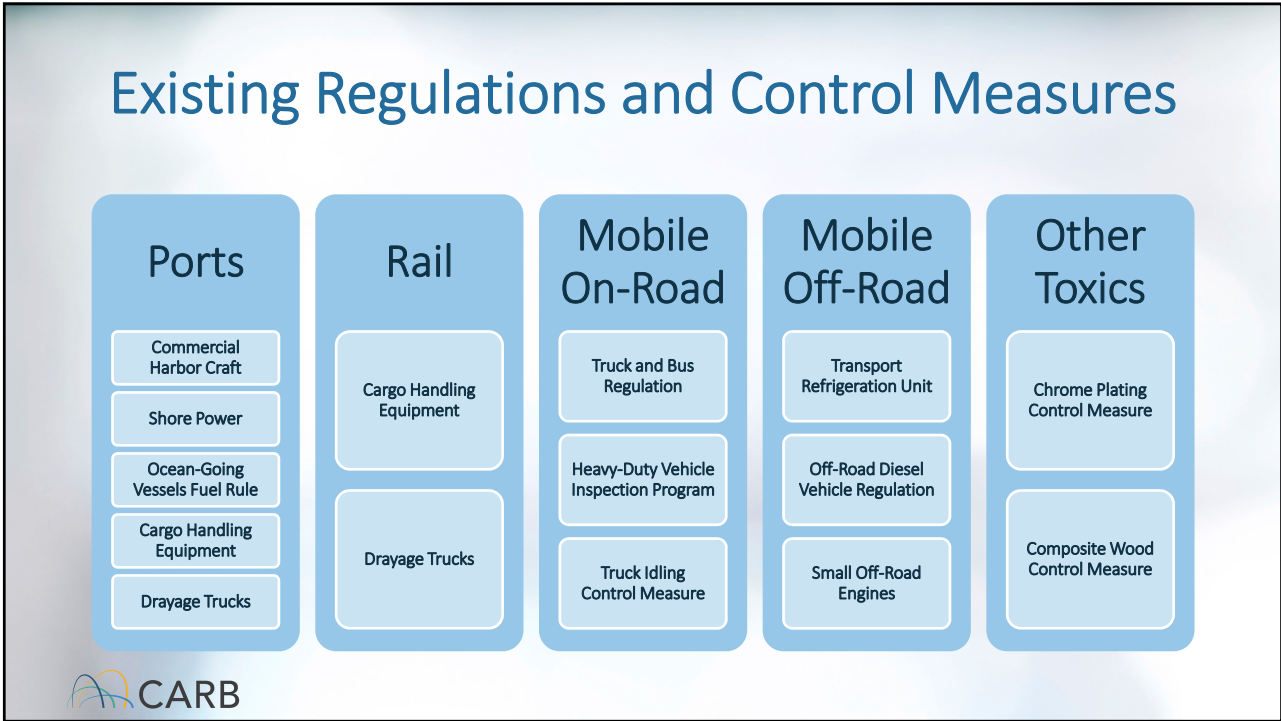


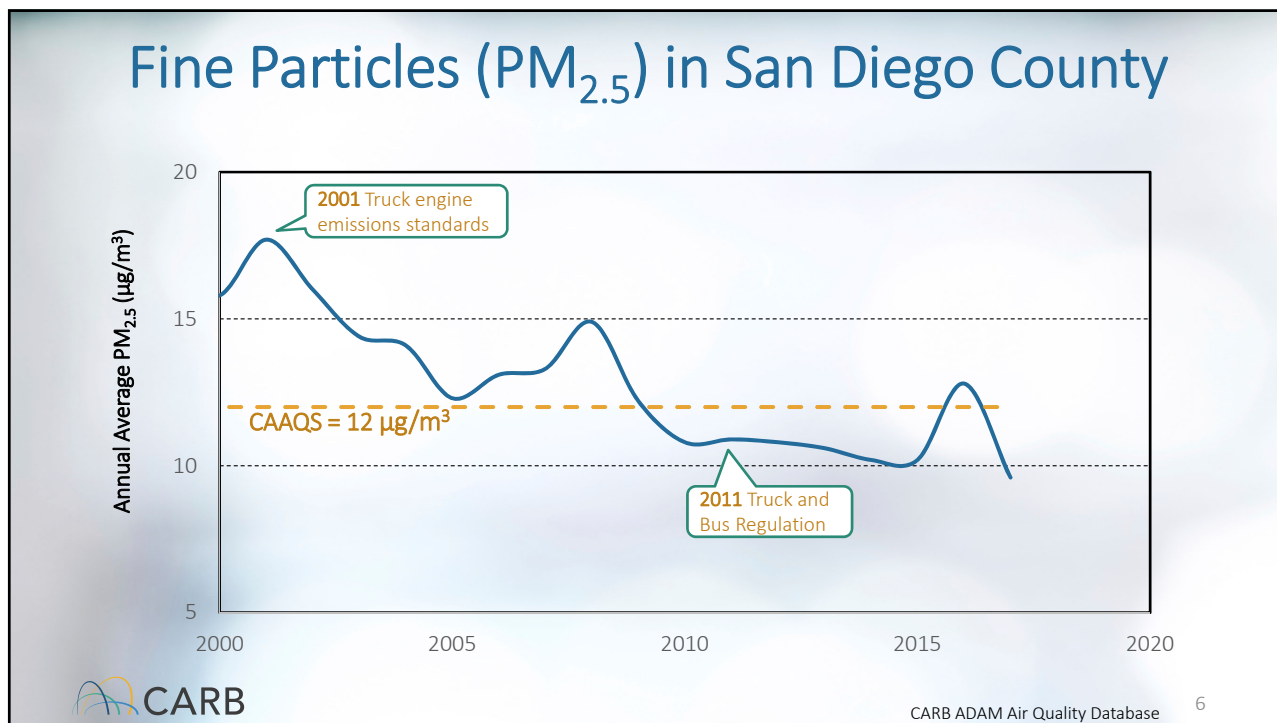
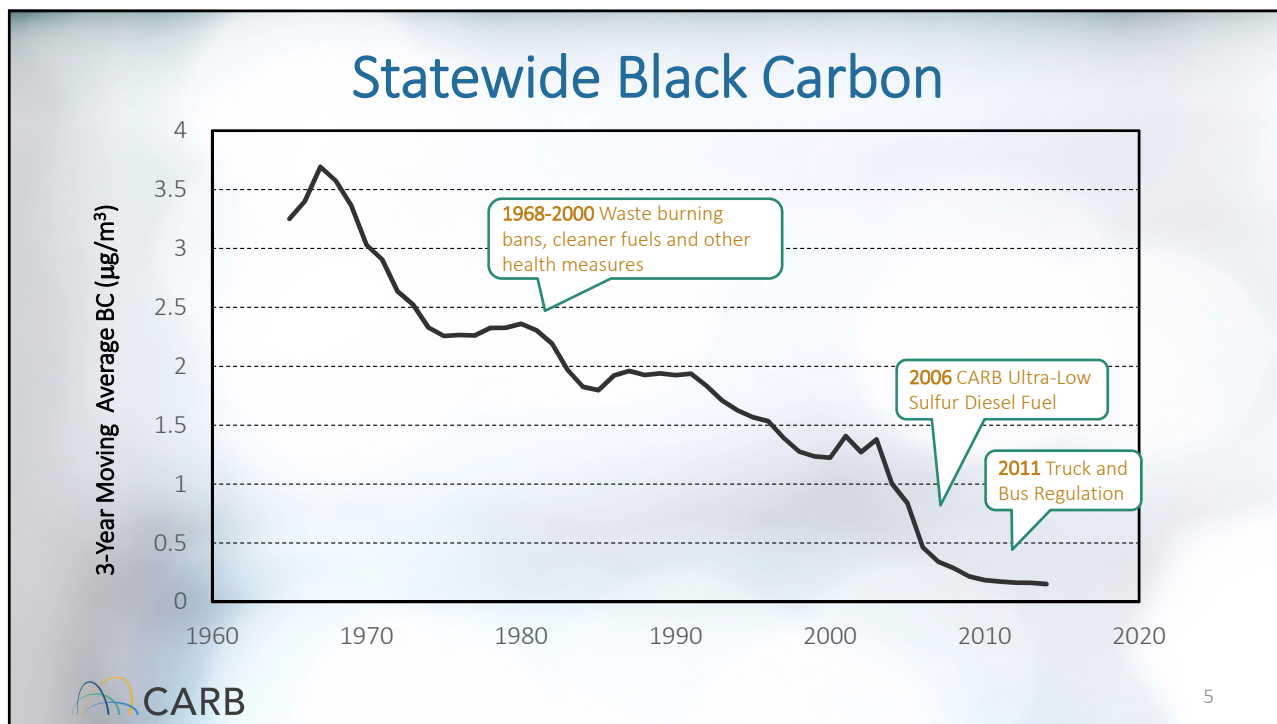
Refineries



Residential  
woodstoves



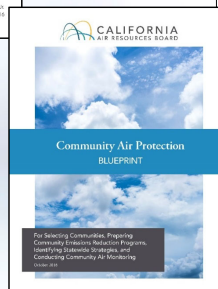
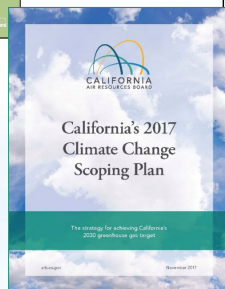
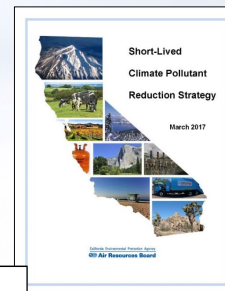
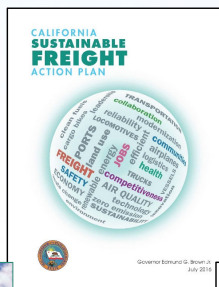
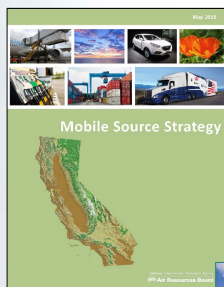




# CARB EMISSIONS REDUCTION STRATEGIES

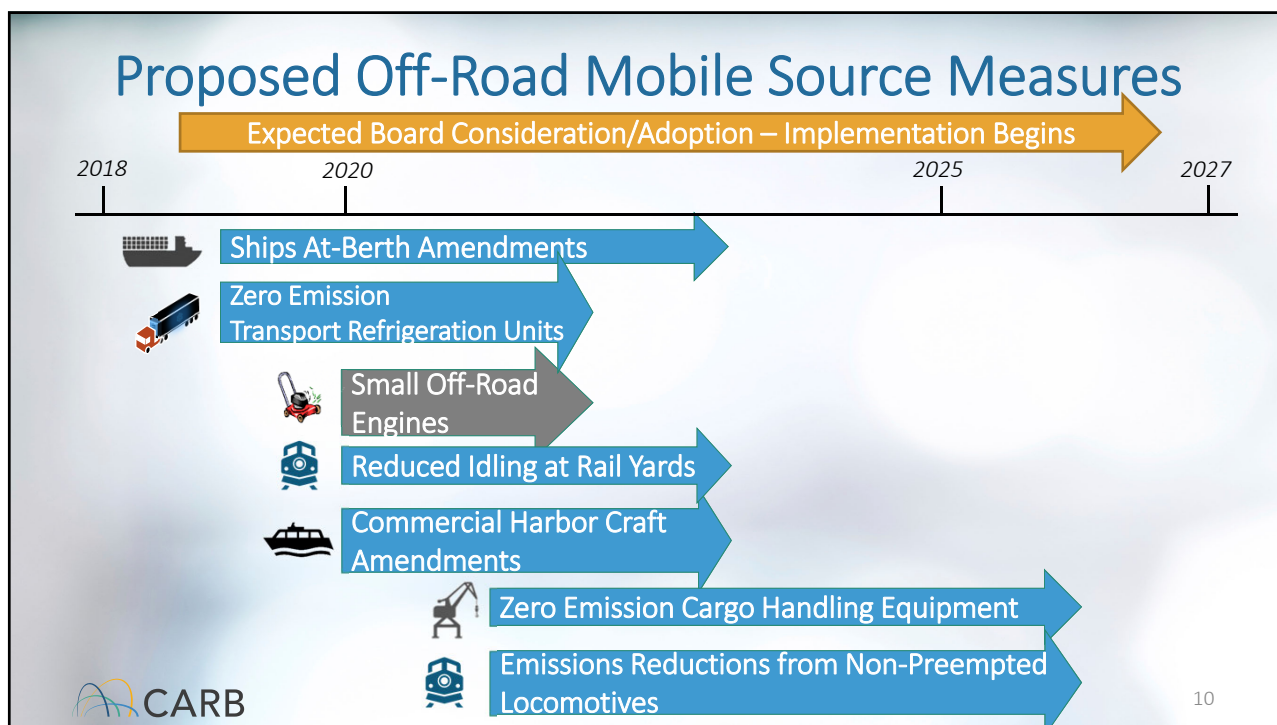
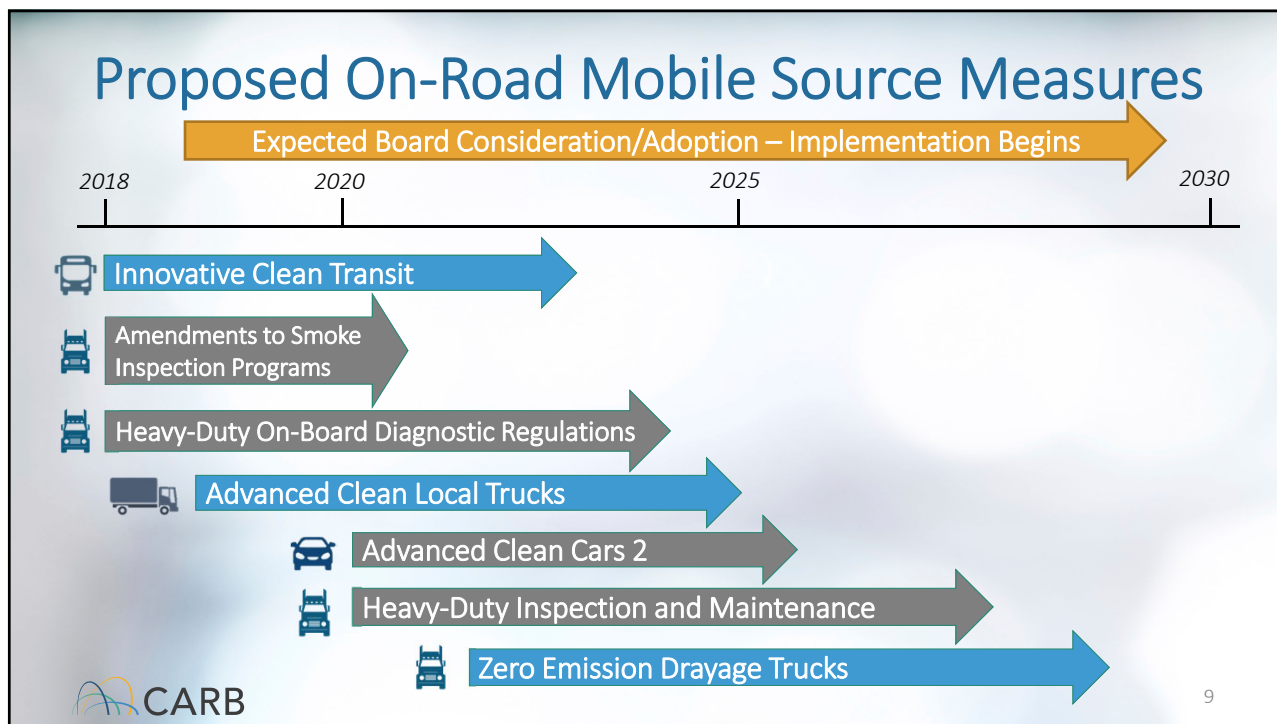


## Recent Plans



All dates for proposed rules are tentative and subject to change





# Additional Proposed Control Measures

- Chrome Plating Control Measure Amendments
- Composite Wood Products Control Measure Amendments
- Commercial Cooking Suggested Control Measure

Expected Board Consideration Date= TBD



# Handout

**PORTSIDE ENVIRONMENTAL JUSTICE NEIGHBORHOODS  
COMMUNITY STEERING COMMITTEE**  
HANDOUT – APRIL 23, 2019

**EXISTING STATEWIDE REGULATIONS AND CONTROL MEASURES**

**PORT RELATED REGULATIONS**

**Commercial Harbor Craft Regulation**  
CARB's existing Commercial Harbor Craft regulation was adopted to reduce emissions of diesel particulate matter, oxides of nitrogen, and Reactive Organic Gases from diesel engines used on Commercial Harbor Craft operating at ports, such as ferries, dredges, and barges.  
<https://www.arb.ca.gov/cour-waak/programs/commercial-harbor-craft>

**Cargo Handling Equipment Regulation**  
CARB's Cargo Handling Equipment Regulation establishes requirements for in-use and newly purchased diesel-powered equipment at ports and intermodal rail yards, such as yard trucks, rubber-tired gantry cranes, container handlers, forklifts and other types of equipment.  
<https://www.arb.ca.gov/cour-waak/programs/cargo-handling-equipment>

**At-Berth Regulation (Shore Power)**  
CARB's At-Berth Regulation (Shore Power) was adopted to reduce emissions of diesel particulate matter and oxides of nitrogen from diesel auxiliary engines on container ships, passenger ships, and refrigerated cargo ships while berthing at a California Port.  
<https://www.arb.ca.gov/ports/shorepower/shorepower.htm>

**Ocean-Going Vessel Fuel Regulation**  
The existing California Ocean-Going Vessel Fuel Regulation requires the use of cleaner marine distillate fuels in ocean-going vessels that visit California seaports to reduce particulate matter, oxides of nitrogen, and sulfur oxide emissions from ocean-going vessels.  
<https://www.arb.ca.gov/ports/oar/nevess/sgu.htm>

**FUEL REGULATIONS**

**Low Carbon Fuel Standard**  
The Low Carbon Fuel Standard sets annual carbon intensity standards, which reduce over time, for gasoline, diesel, and the fuels that replace them.  
<https://www.arb.ca.gov/fuels/low-carbon-fuel-standard.htm>

**Diesel Fuel Regulations**  
The California diesel fuel program set stringent standards for California diesel that produced cost-effective emission reductions from diesel-powered vehicles.  
<https://www.arb.ca.gov/fuels/diesel/diesel.htm>



## Contact Us

Liliana Nuñez

Office of Community Air Protection, CARB

[Liliana.Nunez@arb.ca.gov](mailto:Liliana.Nunez@arb.ca.gov) or 626-350-6561

Melissa Niederreiter, Community Liaison

Office of Community Air Protection, CARB

[Melissa.Niederreiter@arb.ca.gov](mailto:Melissa.Niederreiter@arb.ca.gov) or 916-323-6576

