



San Diego County Air Pollution Control District

Robertson's Ready Mix
Public Meeting

August 11, 2022



Meeting Agenda

SDAPCD

Purpose of this meeting
Air Toxics and the “Hot Spots” Program
Facility operation, emissions, and health risk for 2017 emissions
Next Steps (Risk Reduction Plan)

Public Comment

Receive public comments
Answer questions
SDAPCD staff and Robertson’s staff



Air Toxics “Hot Spots” Program (Assembly Bill 2588)



Air Toxics “Hot Spots” Program

Public Notifications

- Potential Health Risks from a Single Source of Air Pollution

Yes



- Potential Health Risks from ALL Sources of Air Pollution

No



Air Toxics “Hot Spots” Program Health Risks

Cancer Risk

Calculates the probability that a person would contract cancer if exposed to emissions for 30 years

Health Hazard Index

Calculated for acute exposure (or short-term health impacts) and chronic exposure (or long-term health impacts)

Index < 1 → no negative health effects

Index ≥ 1 → potential for negative health effects

Cancer Burden

Estimates of the number of people that can contract cancer within a community that is exposed to the emission levels



Rule 1210 Public Notification and Risk Reduction Thresholds

Health Risk	Public Notification Threshold	Risk Reduction Threshold
Cancer Risk	10 in one million	10 in one million (100 in one million for emissions prior to CY 2018)
Acute Noncancer Health Hazard Index	1.0	1.0
Chronic Noncancer Health Hazard Index	1.0	1.0
Cancer Burden	1.0	1.0



Rule 1210 Public Notification and Risk Reduction Thresholds

Health Risk	Public Notification Threshold	Risk Reduction Threshold
Cancer Risk	10 in one million	10 in one million (100 in one million for emissions prior to CY 2018)
Acute Noncancer Health Hazard Index	1.0	1.0
Chronic Noncancer Health Hazard Index	1.0	1.0
Cancer Burden	1.0	1.0



Elevated Health Risk

Robertson's 2017 Emissions

Health Risk	HRA Results	Risk Notification Thresholds	Risk Reduction Thresholds
Maximum Worker Chronic Health Hazard Index	1.18	1.0	1.0
Maximum Residential Acute Health Hazard Index	1.74	1.0	1.0
Maximum Worker Acute Health Hazard Index	1.50	1.0	1.0



Robertson's Ready Mix

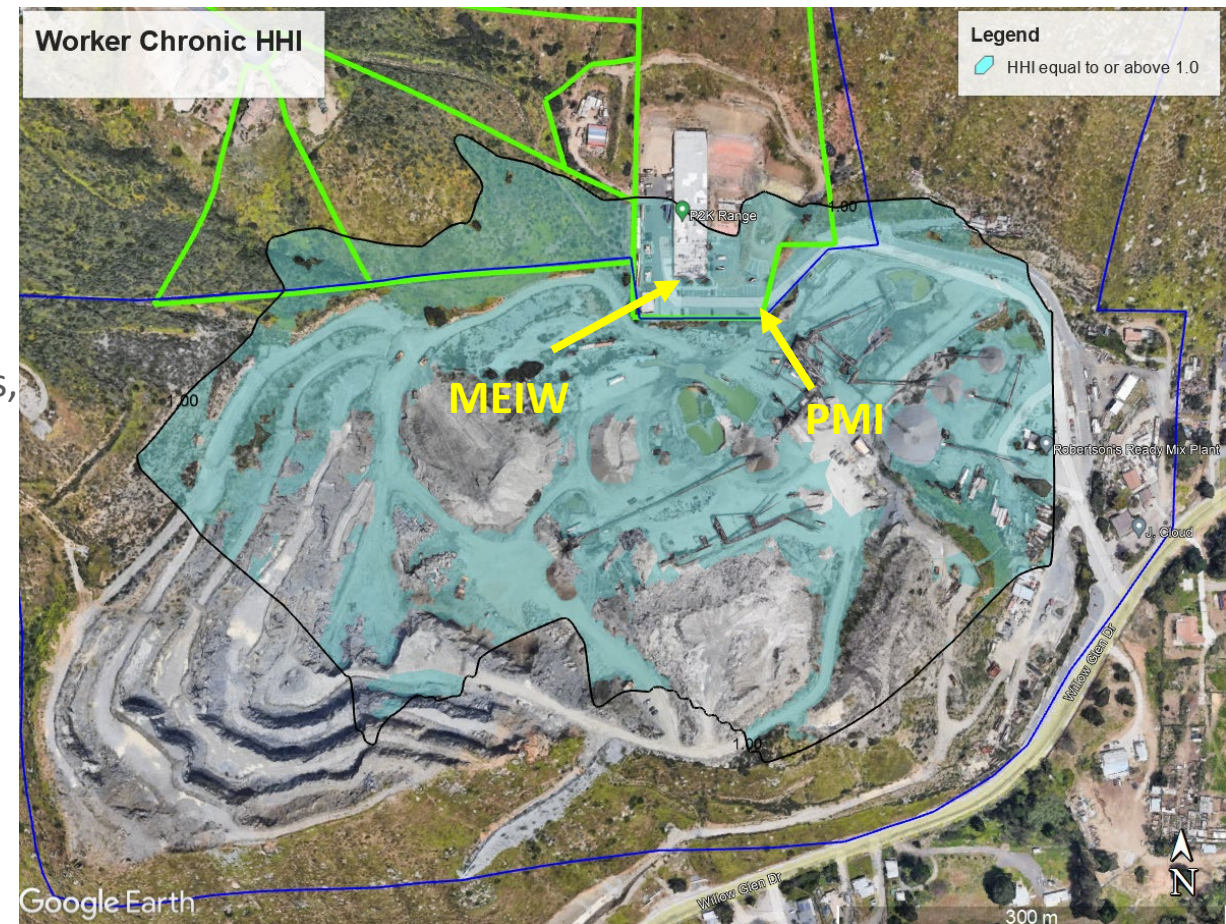
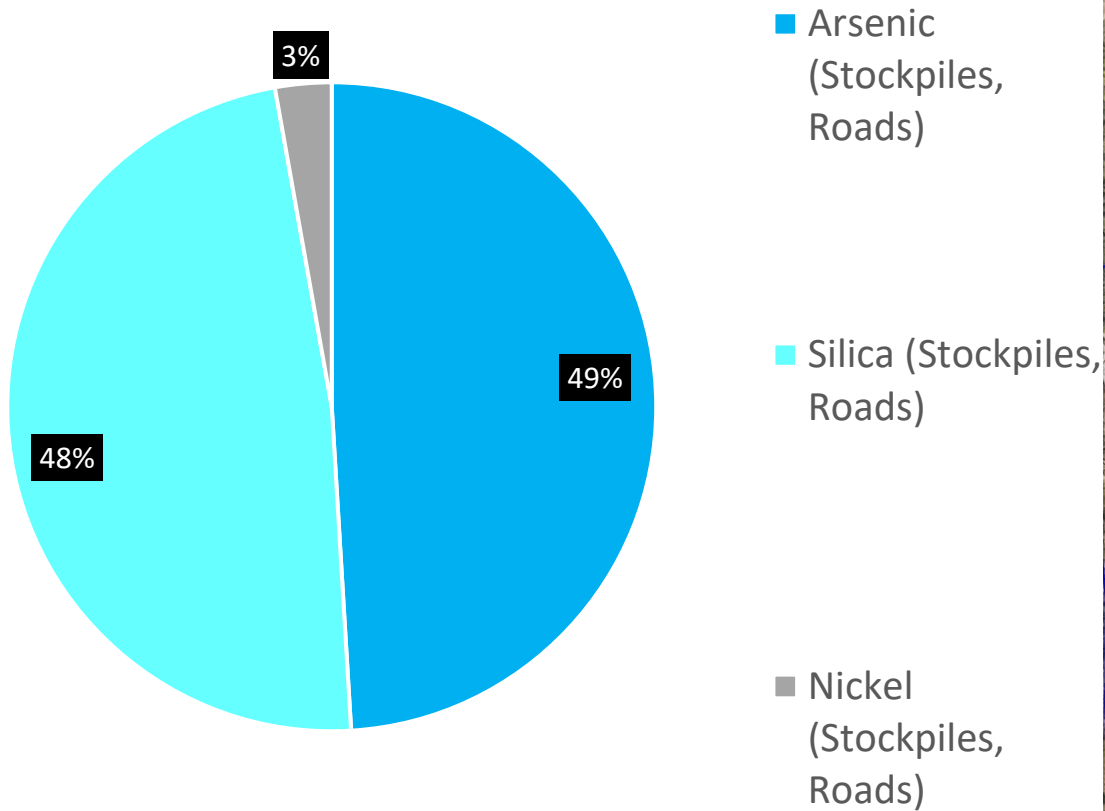
- Aggregate Processing Plant
- 2266 Willow Glen Drive, El Cajon



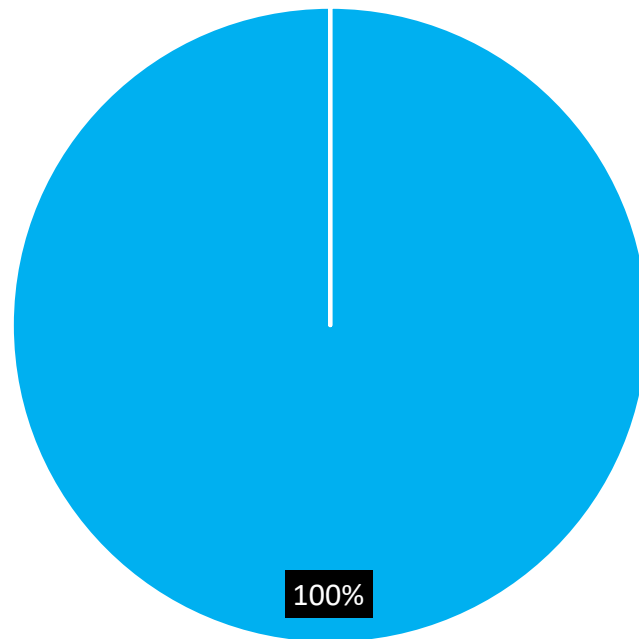
Robertson's Equipment



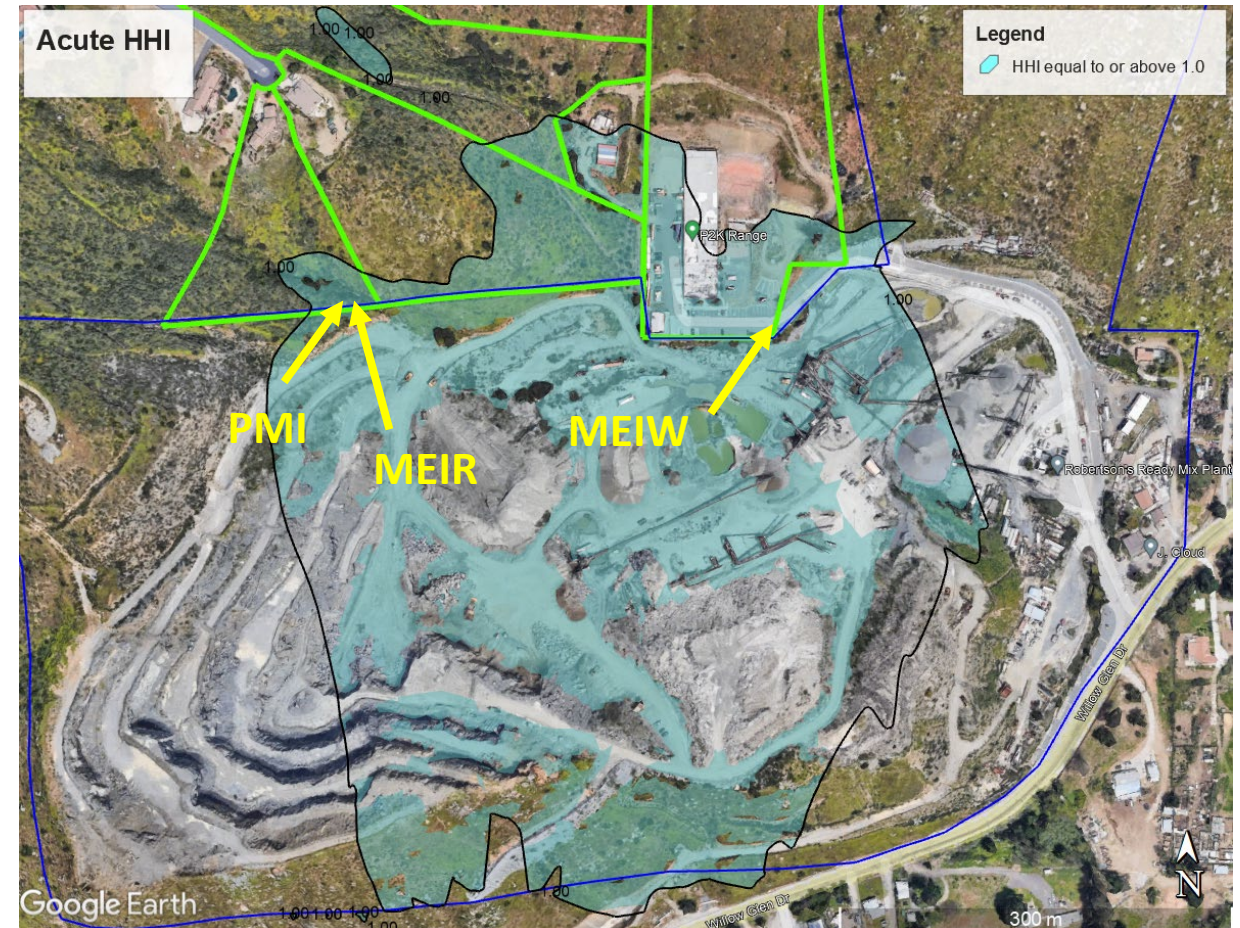
Emission Contributions Worker Chronic non-Cancer Health Hazard Index of 1.18



Emission Contributions Acute non-Cancer Health Hazard Index (Residential 1.74, Worker 1.50)



■ Nickel (Quarry,
Haul Roads)



Next Steps



Robertson's to submit a risk reduction plan (due October 24, 2022)

Considering public comments, District to review and approve risk reduction plan

Robertson's will conduct annual notifications

District to review and approve Robertson's 2021 emission inventory and determine if a HRA is required

Sign up for District Updates to receive notices at
<https://bit.ly/SDAPCD-Updates>

