



San Diego County Air Pollution Control District

Otay Landfill
Public Meeting

August 10, 2022



Meeting Agenda

SDAPCD

Purpose of this meeting

Air Toxics and the “Hot Spots” Program

Facility operation, emissions, and health risk for 2017 emissions

Next Steps

Public Comment

Receive public comments

Answer questions

SDAPCD staff and Otay Landfill staff



Air Toxics “Hot Spots” Program (Assembly Bill 2588)



Air Toxics “Hot Spots” Program

Public Notifications

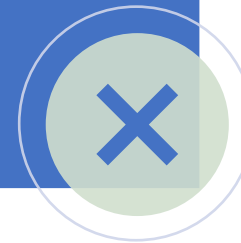
- Potential Health Risks from a Single Source of Air Pollution

Yes



- Potential Health Risks from ALL Sources of Air Pollution

No



Air Toxics “Hot Spots” Program Health Risks

Cancer Risk

Calculates the probability that a person would contract cancer if exposed to emissions for 30 years

Health Hazard Index

Calculated for acute exposure (or short-term health impacts) and chronic exposure (or long-term health impacts)

Index < 1 → no negative health effects

Index ≥ 1 → potential for negative health effects

Cancer Burden

Estimates of the number of people that can contract cancer within a community that is exposed to the emission levels



Rule 1210 Public Notification and Risk Reduction Thresholds

Health Risk	Public Notification Threshold	Risk Reduction Threshold
Cancer Risk	10 in one million	10 in one million (100 in one million for emissions prior to CY 2018)
Acute Noncancer Health Hazard Index	1.0	1.0
Chronic Noncancer Health Hazard Index	1.0	1.0
Cancer Burden	1.0	1.0



Rule 1210 Public Notification and Risk Reduction Thresholds

Health Risk	Public Notification Threshold	Risk Reduction Threshold
Cancer Risk	10 in one million	10 in one million (100 in one million for emissions prior to CY 2018)
Acute Noncancer Health Hazard Index	1.0	1.0
Chronic Noncancer Health Hazard Index	1.0	1.0
Cancer Burden	1.0	1.0



Elevated Health Risk Otay Landfill 2017 Emissions

Health Risk	HRA Results	Risk Notification Thresholds	Risk Reduction Thresholds
Maximum Residential Cancer Risk	30.39 in one million	10 in one million	100 in one million
Maximum Residential Chronic Health Hazard Index	1.79	1.0	1.0
Maximum Worker Chronic Health Hazard Index	1.63	1.0	1.0
Maximum Residential Acute Health Hazard Index	1.05	1.0	1.0
Maximum Worker Acute Health Hazard Index	1.28	1.0	1.0



Otay Landfill

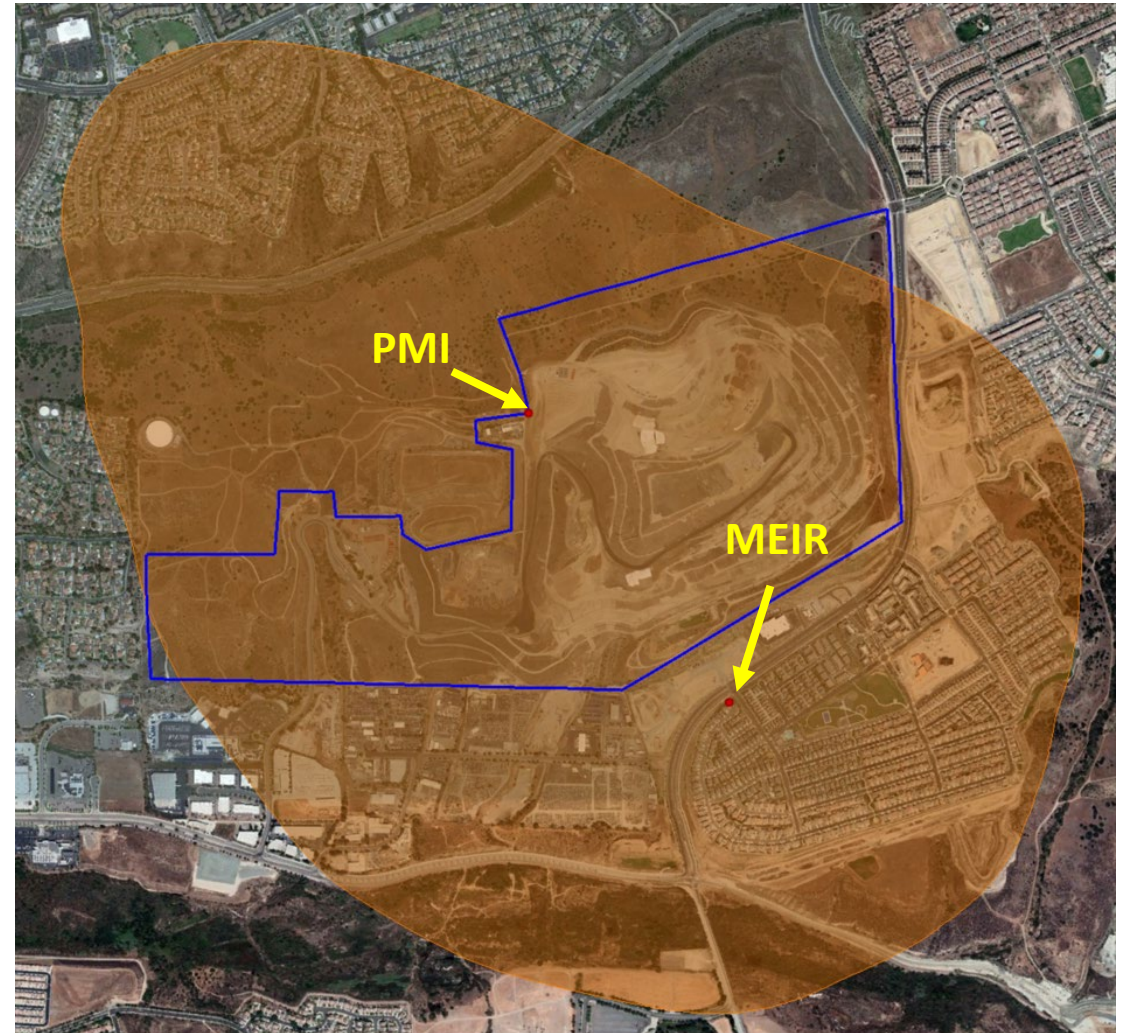
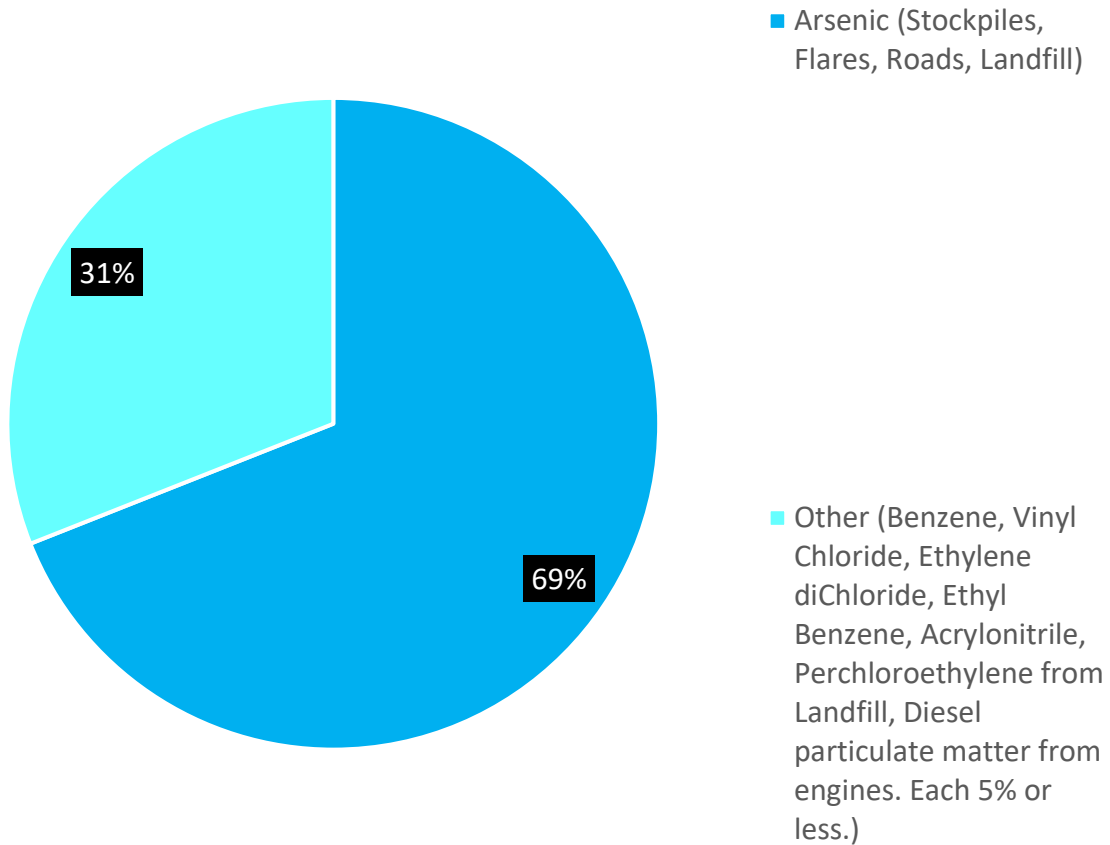
- Active Non-Hazardous Waste Landfill
- 1700 Maxwell Road, Chula Vista



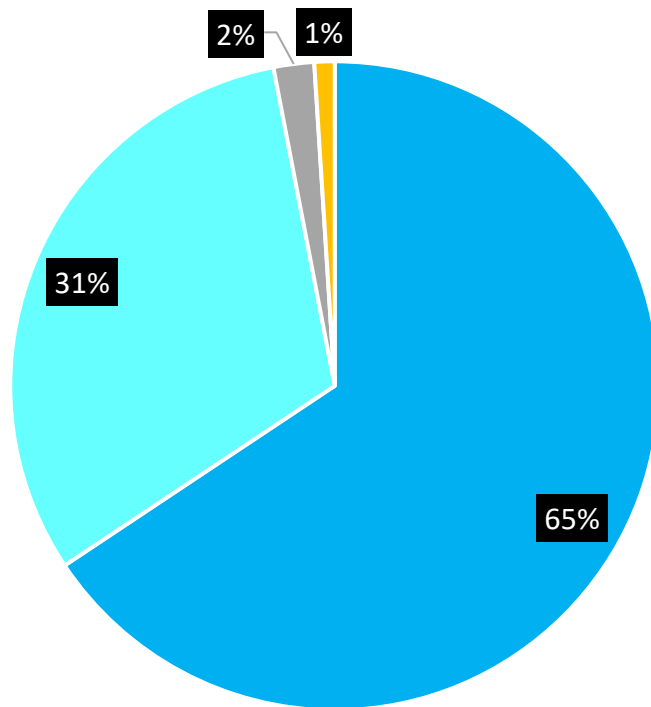
Otay Landfill Equipment



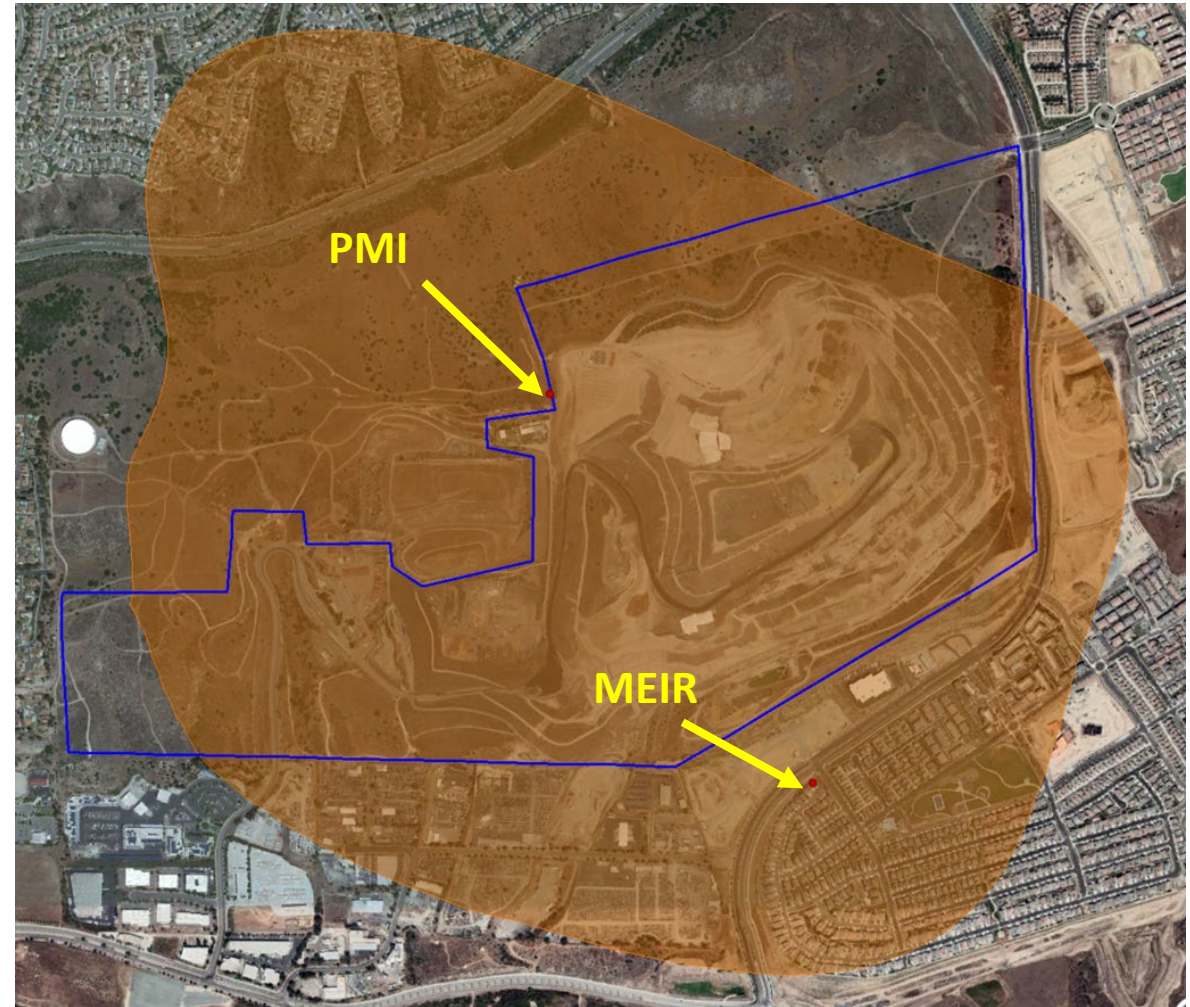
Emission Contributions Residential Cancer Risk of 30.39 in one million



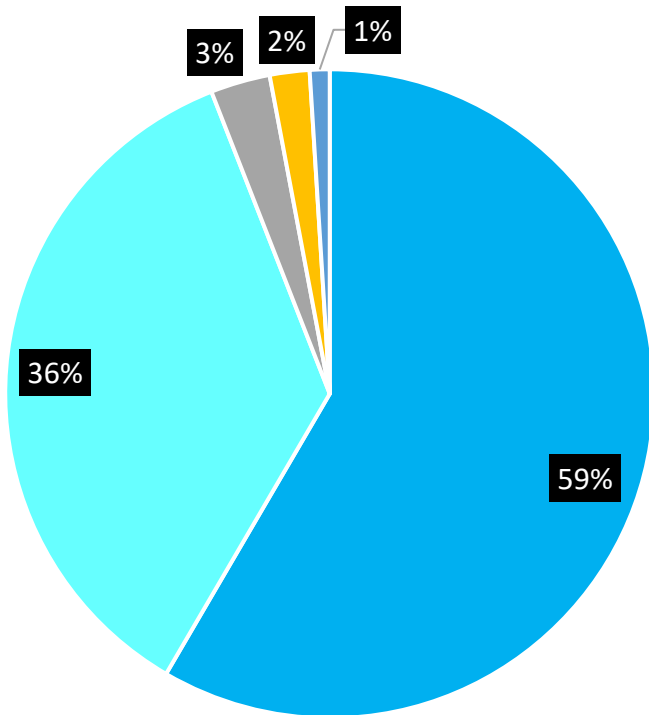
Emission Contributions Residential Chronic non-Cancer Health Hazard Index of 1.79



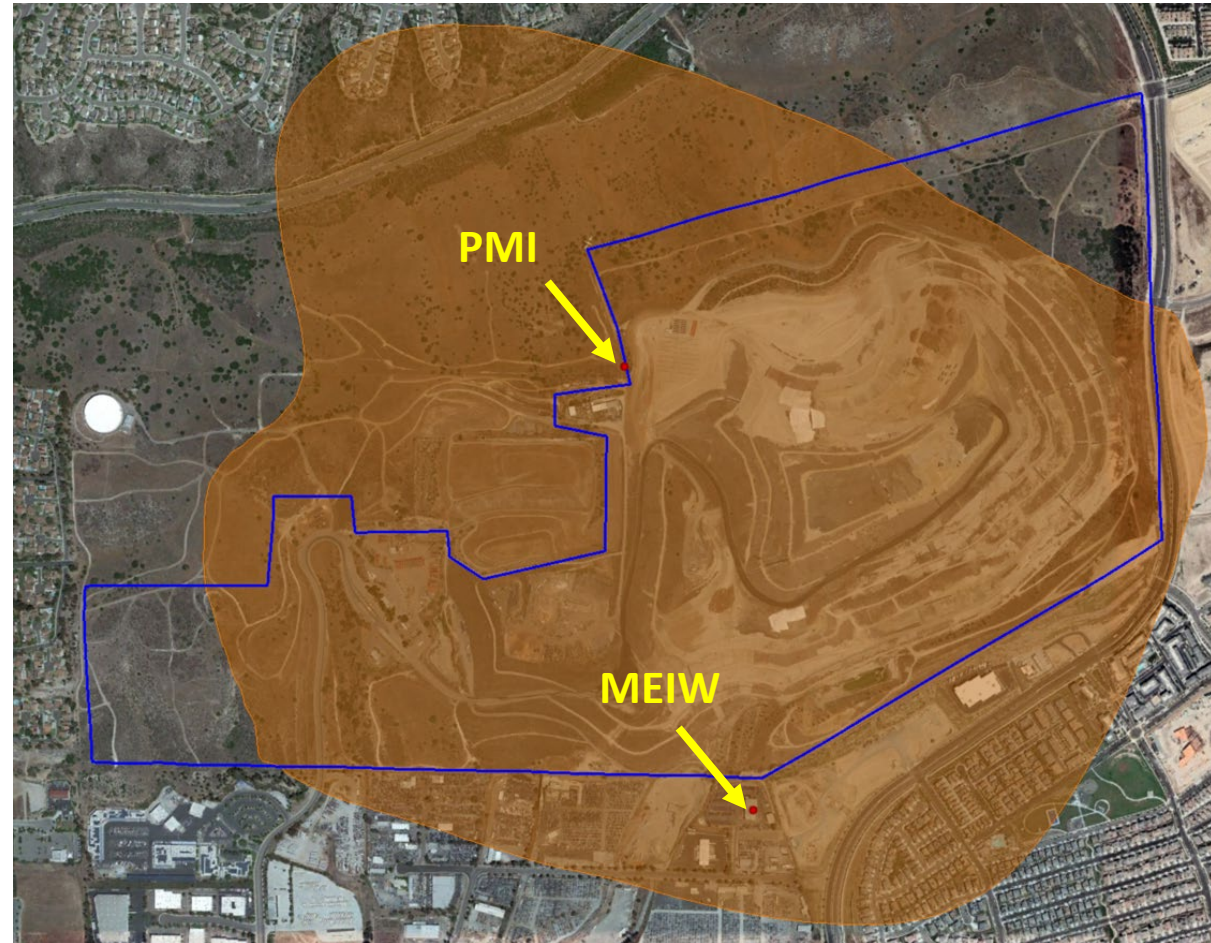
- Arsenic (Stockpiles, Flares, Roads, Landfill)
- Silica (Stockpiles, Roads, Landfill)
- Hydrogen Sulfide (Flares)
- Nickel (Stockpiles, Roads, Landfill)



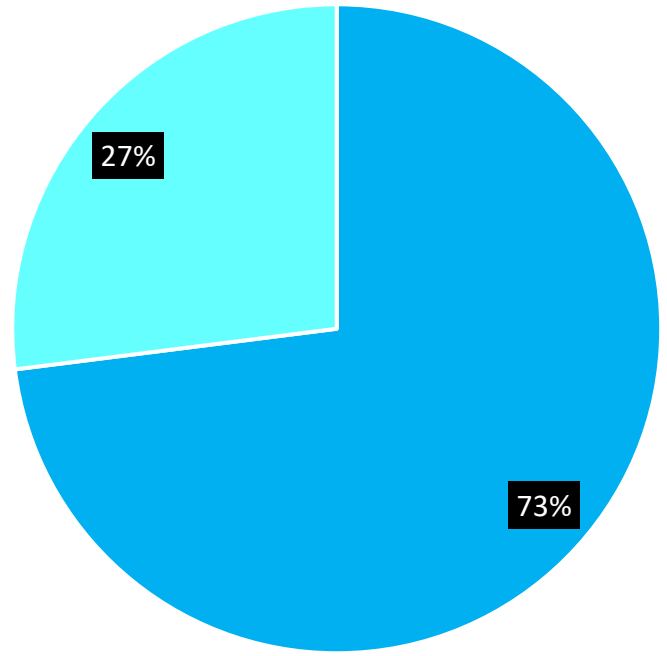
Emission Contributions Worker Chronic non-Cancer Health Hazard Index of 1.63



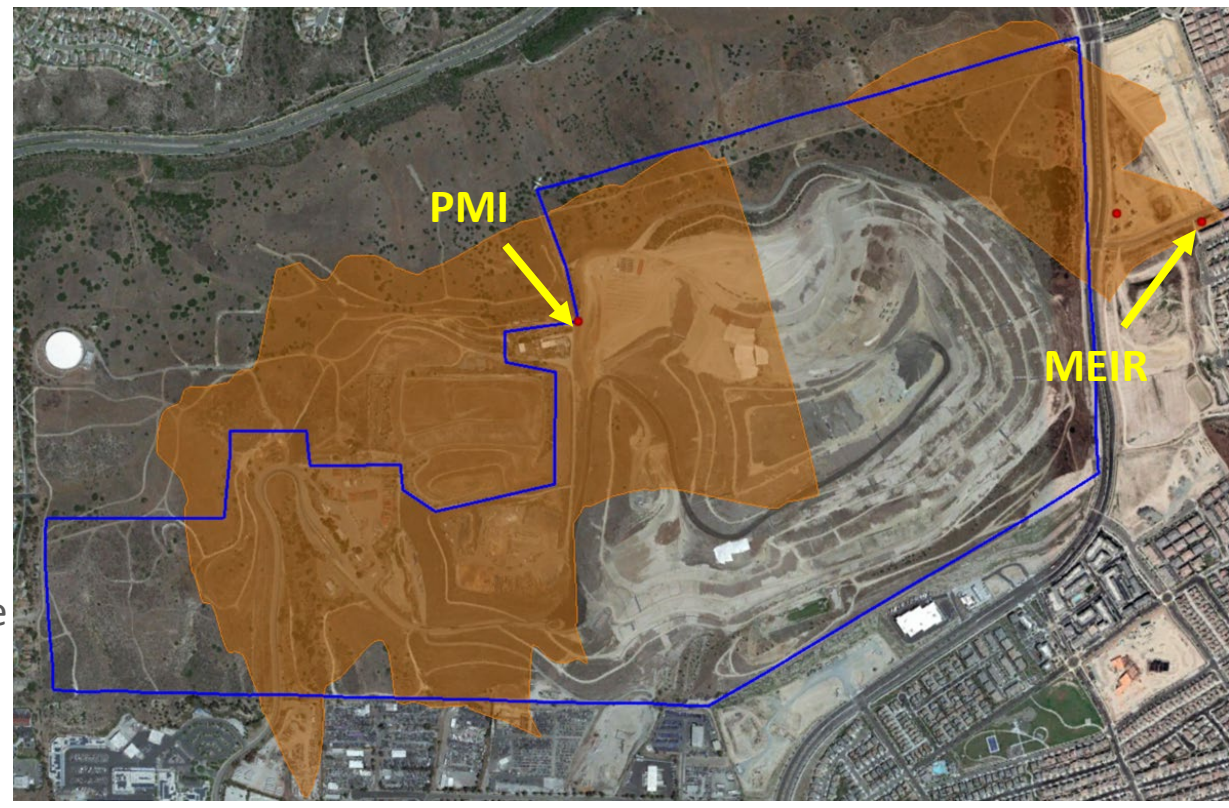
- Arsenic (Stockpiles, Flares, Roads)
- Silica (Stockpiles, Roads, Landfill)
- Hydrogen Sulfide (Landfill)
- Nickel (Stockpiles, Roads, Landfill)
- Hydrogen Chloride (Flares)



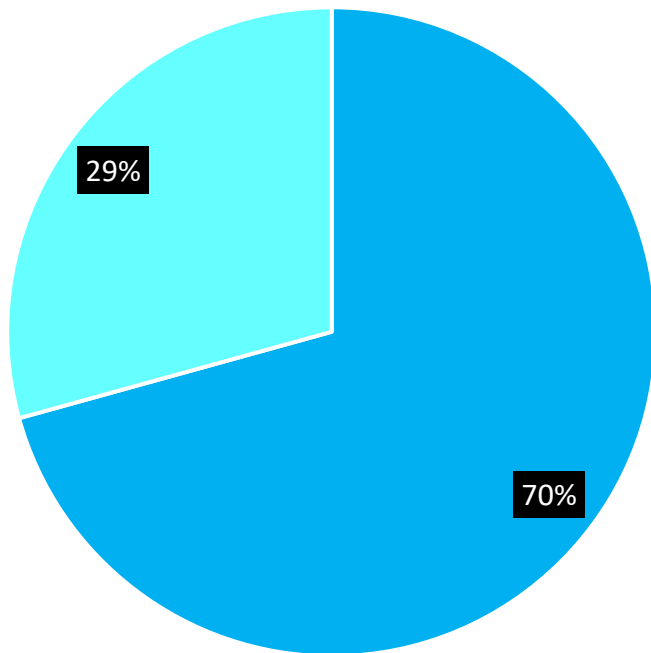
Emission Contributions Residential Acute non-Cancer Health Hazard Index of 1.05



- Arsenic (Stockpiles, Roads, Landfill)
- Hydrogen Sulfide (Landfill)

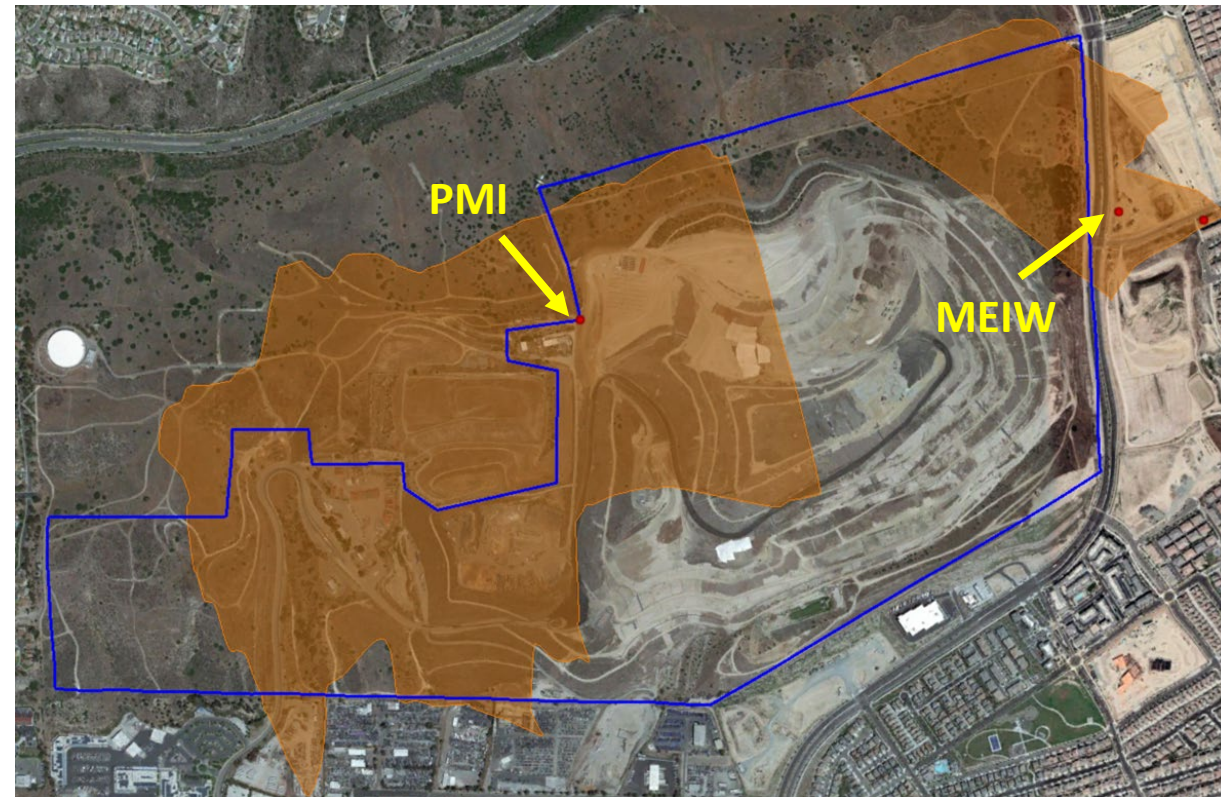


Emission Contributions Worker Acute non-Cancer Health Hazard Index of 1.28



■ Arsenic
(Stockpiles,
Roads, Landfill)

■ Hydrogen Sulfide
(Landfill)



Risk Reduction Plan

Required

- Otay Landfill was required to and submitted a risk reduction plan to the District

Approved

- The District has reviewed and approved the risk reduction plan and required Otay Landfill to implement the risk reduction measures

Implemented

- Otay Landfill has already implemented all risk reduction measures approved by the District



Next Steps



District to review and approve Otay Landfill's 2021 emission inventory

Determine if a new HRA is required based on the 2021 emissions

Sign up for District Updates to receive notices at <https://bit.ly/3JTGsre>

