



San Diego County Air Pollution Control District

Hanson Aggregates

Public Meeting

November 29, 2022



Meeting Agenda

SDAPCD

Purpose of this meeting

Air Toxics and the “Hot Spots” Program

Facility operation, emissions, and health risk for 2015 and 2019 emissions

Next Steps (Risk Reduction Plan)

Public Comment

Receive public comments

Answer questions

SDAPCD staff and Hanson staff



Air Toxics “Hot Spots” Program (Assembly Bill 2588)



Air Toxics “Hot Spots” Program

Public Notifications

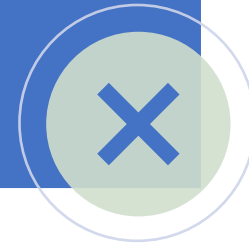
- Potential Health Risks from a Single Source of Air Pollution

Yes



- Potential Health Risks from ALL Sources of Air Pollution

No



Air Toxics “Hot Spots” Program Health Risks

Cancer Risk

Calculates the probability that a person would contract cancer if exposed to emissions for 30 years

Health Hazard Index

Calculated for acute exposure (or short-term health impacts) and chronic exposure (or long-term health impacts)

Index < 1 → no negative health effects

Index ≥ 1 → potential for negative health effects

Cancer Burden

Estimates of the number of people that can contract cancer within a community that is exposed to the emission levels



Rule 1210 Public Notification and Risk Reduction Thresholds

Health Risk	Public Notification Threshold	Risk Reduction Threshold
Cancer Risk	10 in one million	10 in one million (100 in one million for emissions prior to CY 2018)
Acute Noncancer Health Hazard Index	1.0	1.0
Chronic Noncancer Health Hazard Index	1.0	1.0
Cancer Burden	1.0	1.0



Rule 1210 Public Notification and Risk Reduction Thresholds

Health Risk	Public Notification Threshold	Risk Reduction Threshold
Cancer Risk	10 in one million	10 in one million (100 in one million for emissions prior to CY 2018)
Acute Noncancer Health Hazard Index	1.0	1.0
Chronic Noncancer Health Hazard Index	1.0	1.0
Cancer Burden	1.0	1.0



Elevated Health Risk Hanson Aggregates' 2019 Emissions

Health Risk	HRA Results	Risk Notification Thresholds	Risk Reduction Thresholds
Maximum Residential Cancer Risk	14.7	10	10
Maximum Worker Cancer Risk	19.7	10	10
Maximum Worker Non-Cancer Chronic Health Hazard Index	8.3	1.0	1.0



Hanson Aggregates

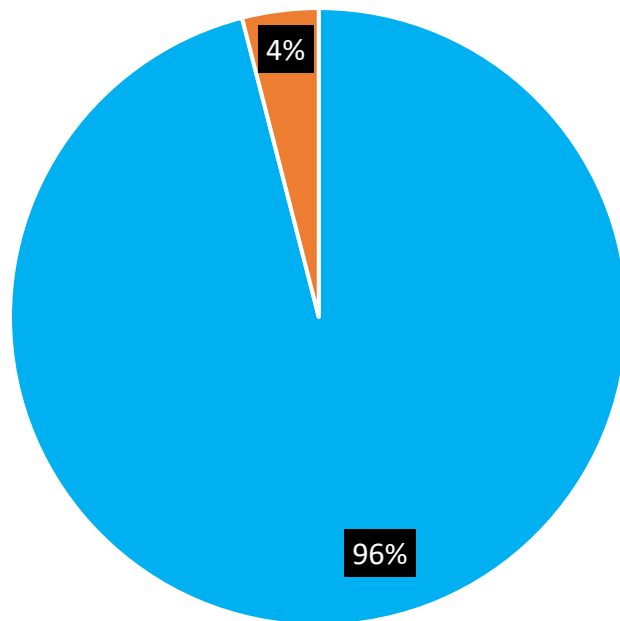
- Aggregate mining and processing
- 8514 Mast Blvd, Santee



Hanson Aggregates' Equipment



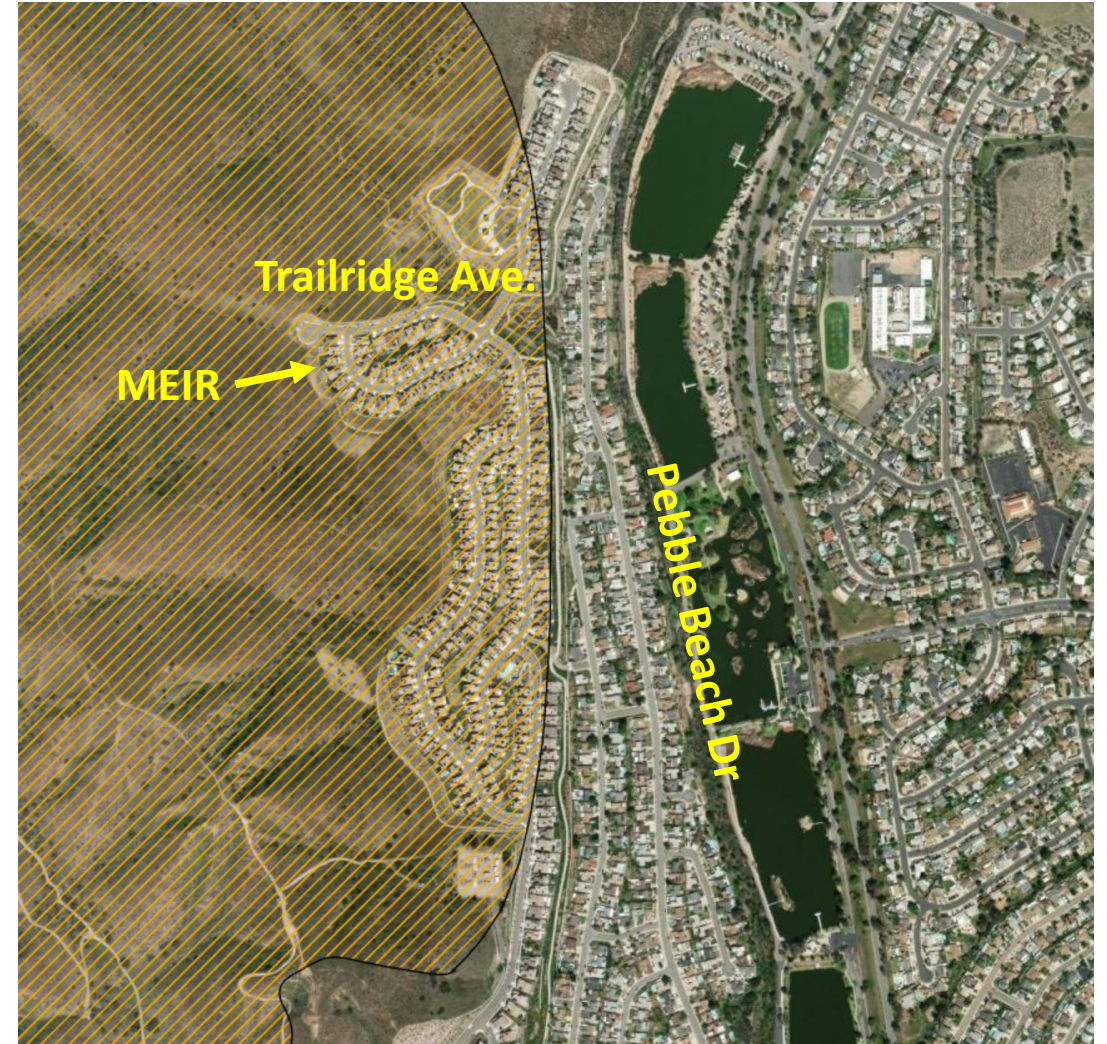
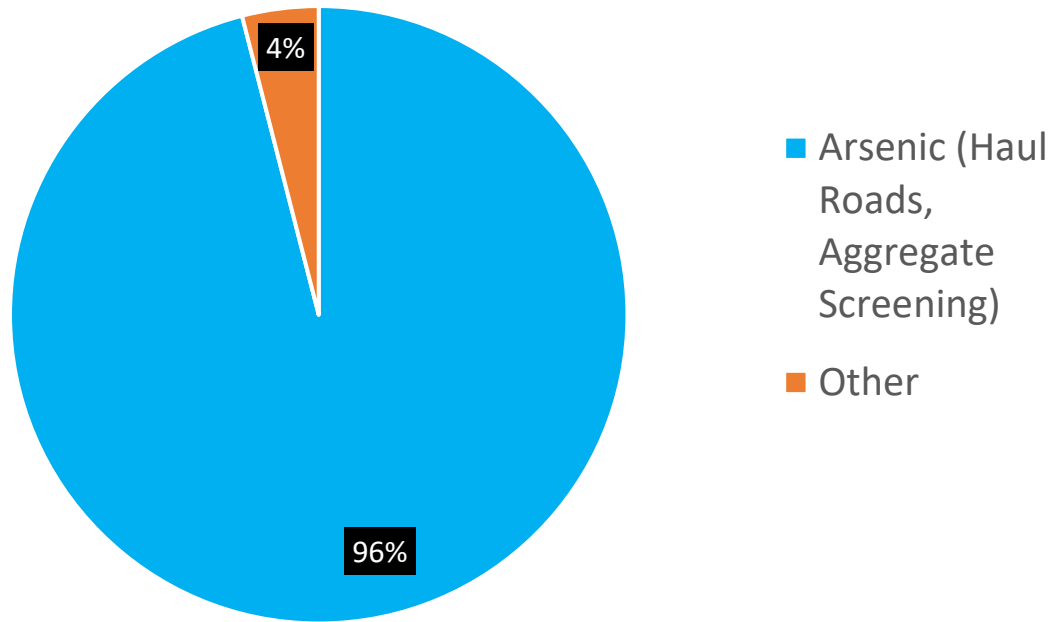
Emission Contributions to Residential Cancer Risk of 14.7 in One Million



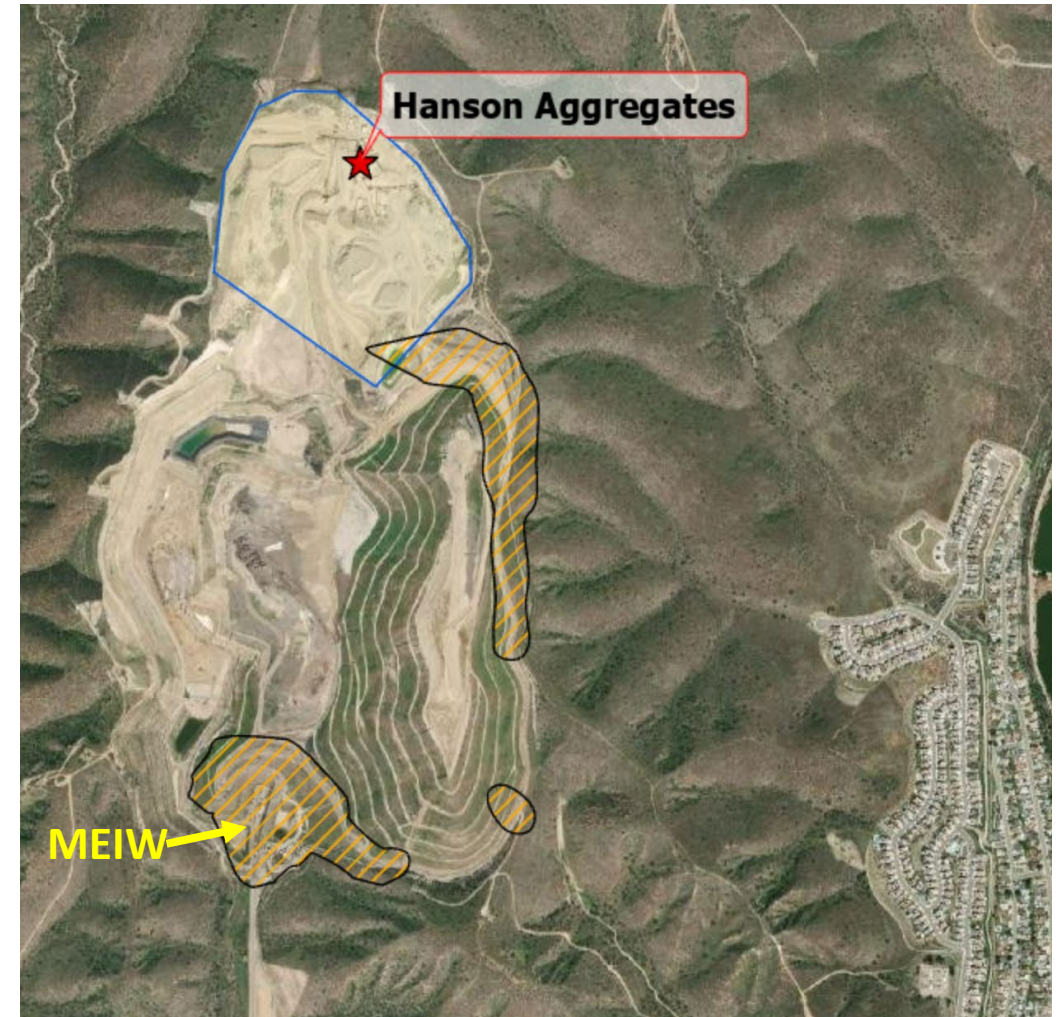
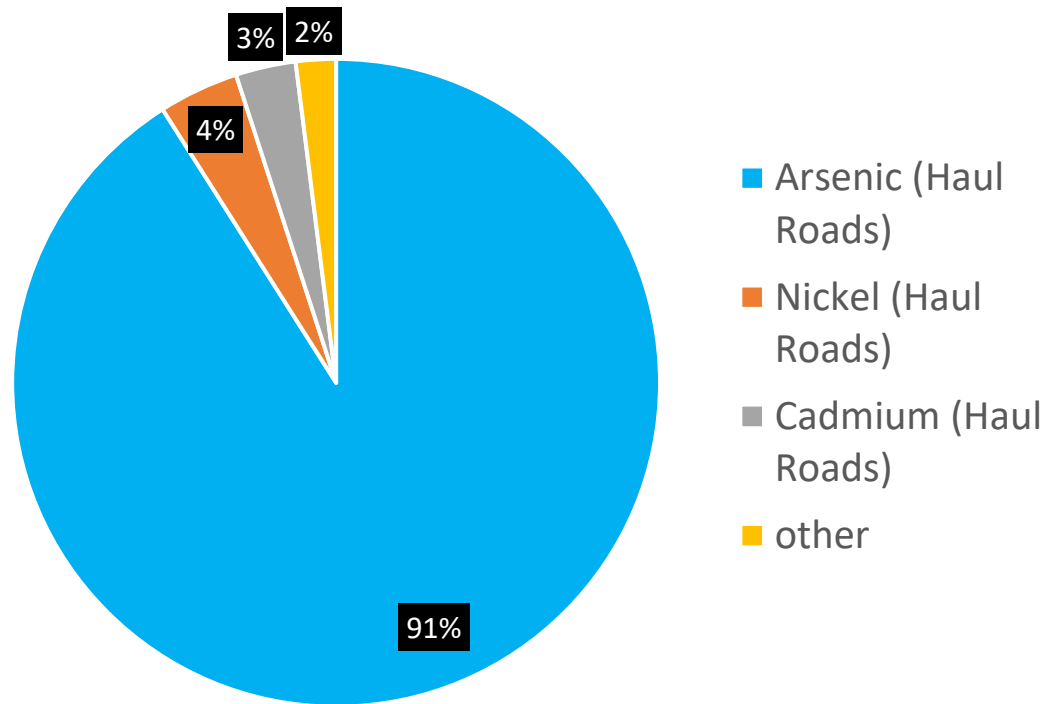
- Arsenic (Haul Roads, Aggregate Screening)
- Other



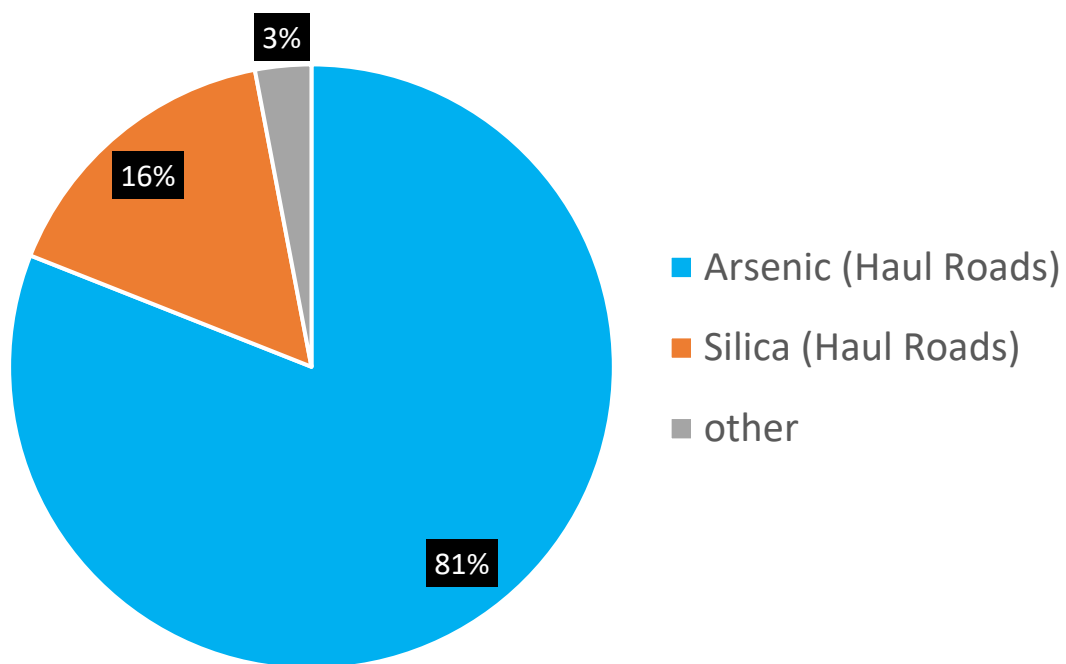
Emission Contributions to Residential Cancer Risk of 14.7 in One Million



Emission Contributions to Worker Cancer Risk of 19.7 in One Million



Emission Contributions Worker Chronic non-Cancer Health Hazard Index of 8.3



Next Steps



Hanson to submit a risk reduction plan (RRP, due January 29, 2023), and District to post the RRP for Public Review and Comment

After considering public comments, District to complete review and final approval/disapproval of the RRP

Hanson will conduct annual notifications

District to review and approve Hanson's 2021 emission inventory and determine if a HRA is required

Sign up for District Updates to receive notices at <https://bit.ly/SDAPCD-Updates>

