

REVIEW OF CREMATION SERVICES INC. AB2588 HEALTH RISK ASSESSMENT (HRA)

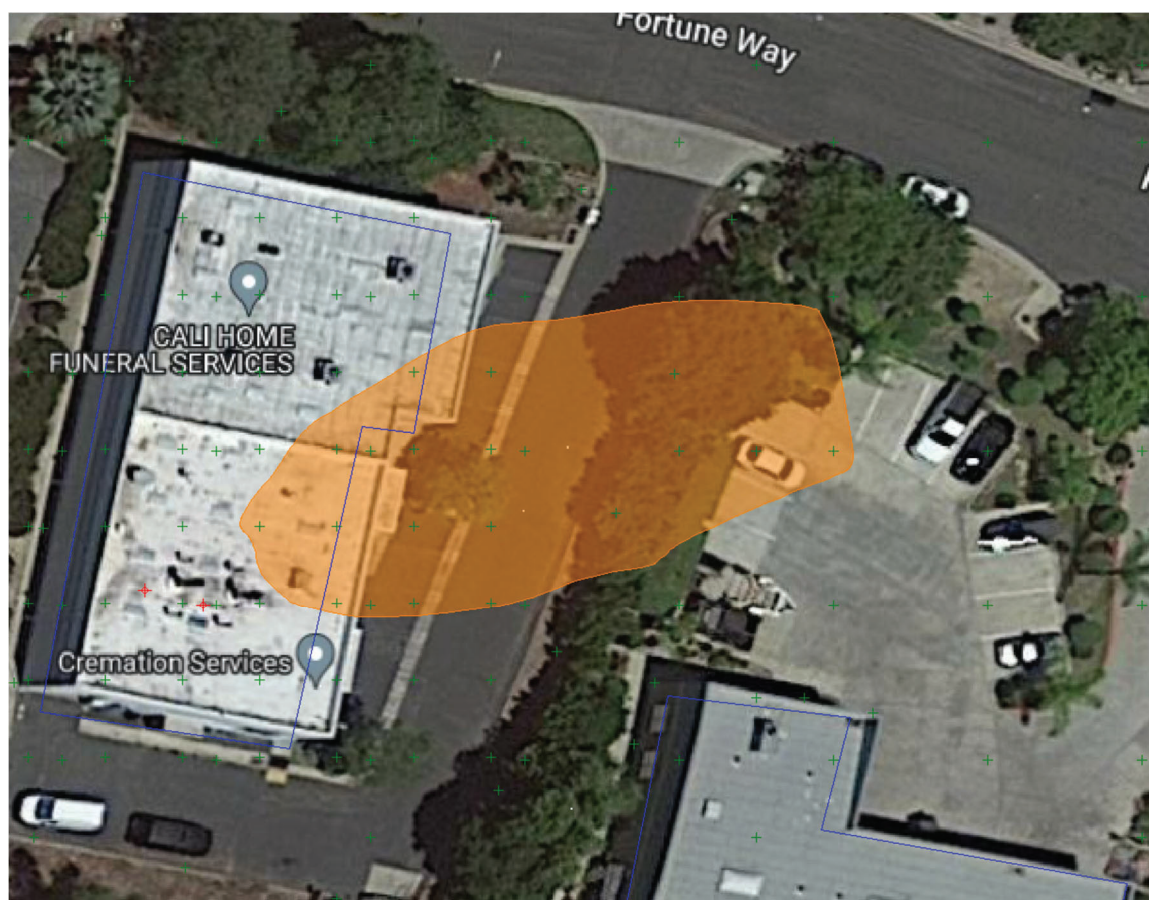
Changes to the Revised HRA

Receptors were added to the neighboring suites occupied in 2016.

AERMOD – Version 19191 was used in the District revision.

Notification-Triggering Isopleths

Worker Cancer Notification Isopleth



**REVIEW OF CREMATION SERVICES INC.
AB2588 HEALTH RISK ASSESSMENT (HRA)**

Worker Chronic Non-Cancer Health Hazard Index Notification Isopleth

