

San Diego County Air Pollution Control District (District)



San Diego County
**Air Pollution
Control District**

Vulcan Materials Western Division Public Meeting

June 8, 2022

Meeting Agenda



San Diego County
Air Pollution
Control District

SDAPCD

Purpose of this meeting

Air Toxics and the “Hot Spots” Program

Facility operation, emissions, and health risk for 2017 emissions

Next Steps (Risk Reduction Plan)

Public Comment

Receive public comments

Answer questions

SDAPCD staff and Vulcan staff



Vulcan Materials Company

- Vulcan produces its products safely and with concern for public health, the environment, and pollution prevention.
- Vulcan provides our employees and the communities which we work in with a healthy and safe environment.
- Vulcan engages in the process of continuous improvement by periodically setting health, safety, and environmental targets and objectives and by constantly reviewing progress and achievement.
- Contact:
Barbara Goodrich-Welk
Manager, Government & Community Affairs
858-530-9444

California Air Toxics “Hot Spots” Program (Assembly Bill 2588)



San Diego County
Air Pollution
Control District

Program Goal

- Protects the public’s right to know about toxic air contaminant emissions and how these emissions can potentially impact public health; and,
- Requires health risk reductions for facilities with elevated health risks

Toxic Air Contaminants

- Chemicals emitted into the atmosphere that may cause adverse health effects

Adverse Health Effect

- Range from minor eye or throat irritation, shortness of breath, or headaches, to cancer, birth defects, or damage to organs

California Air Toxics “Hot Spots” Program



San Diego County
Air Pollution
Control District

**Quantify Toxic
Air Contaminant
Emissions**

**Identify Facilities
that may Present
Public Health
Concerns**

**Request Health
Risk
Assessments –
Review and
Approve**

**Implement
Public
Notification and
Risk Reduction
Requirements**

Air Toxics “Hot Spots” Program Health Risks



San Diego County
Air Pollution
Control District

Cancer Risk

Calculates the probability that a person would contract cancer if exposed to emissions for 30 years

Health Hazard Index

Calculated for acute exposure (or short-term health impacts) and chronic exposure (or long-term health impacts)

Index < 1 → no adverse health effects

Index ≥ 1 → potential for adverse health effects

Cancer Burden

Estimates of the number of people that can contract cancer within a community that is exposed to the emission levels

Public Notification and Risk Reduction Thresholds



San Diego County
Air Pollution
Control District

Health Risk	Public Notification Threshold	Risk Reduction Threshold
Cancer Risk	10 in one million	10 in one million (100 in one million for emissions prior to CY 2018)
Acute Noncancer Health Hazard Index	1.0	1.0
Chronic Noncancer Health Hazard Index	1.0	1.0
Cancer Burden	1.0	1.0

Vulcan Materials Western Division



San Diego County
Air Pollution
Control District

- Vulcan Materials
- Mineral Industry Facility
- 10051 Black Mountain Road, San Diego



Vulcan Equipment



San Diego County
Air Pollution
Control District



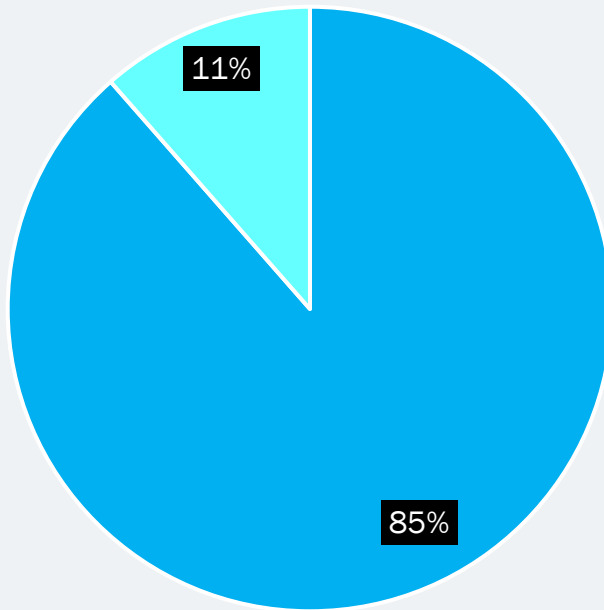
Elevated Health Risks Vulcan 2017 Emissions

Health Risk	HRA Results	Risk Notification Thresholds	Risk Reduction Thresholds
Maximum Worker Chronic Health Hazard Index	1.20	1.0	1.0
Maximum Worker Acute Health Hazard Index	2.63	1.0	1.0

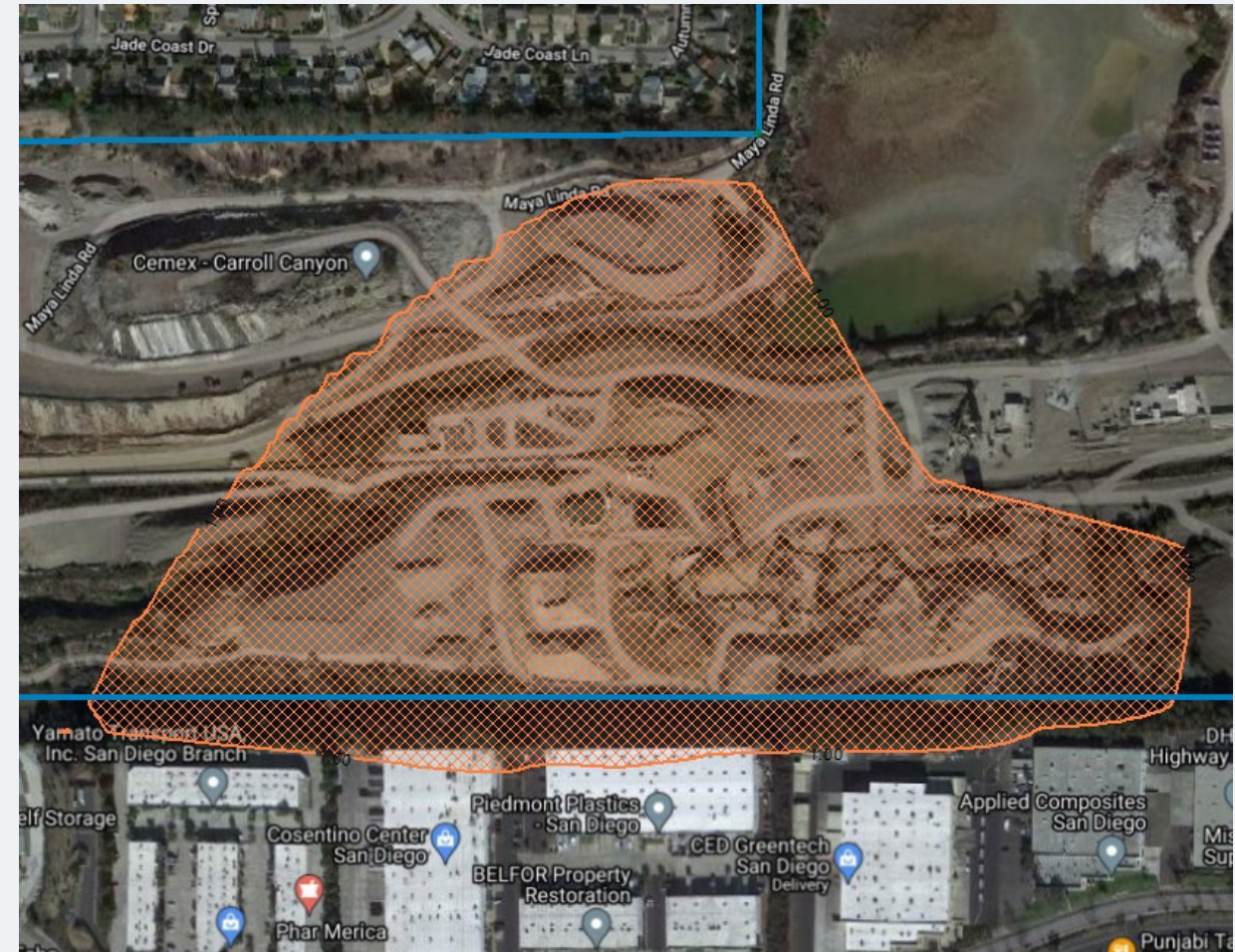
Emission Contributions Worker Chronic Non-Cancer Health Hazard Index of 1.20



San Diego County
Air Pollution
Control District



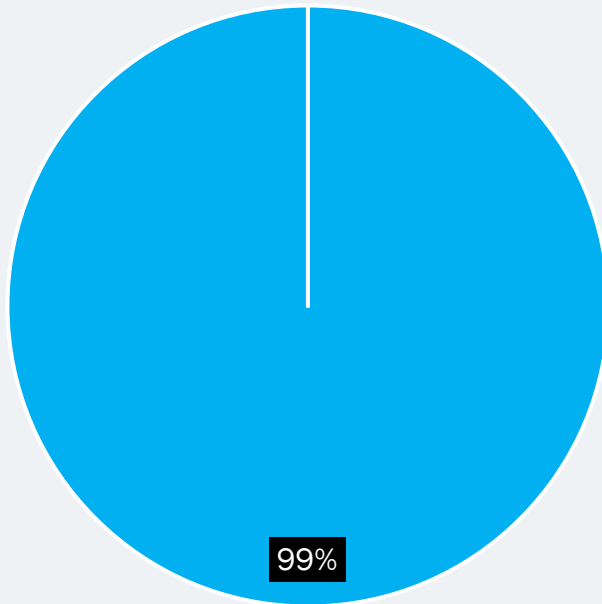
- Arsenic (Aggregate Plant, Haul Roads, Storage Piles)
- Silica (Aggregate Plant, Haul Roads, Storage Piles)



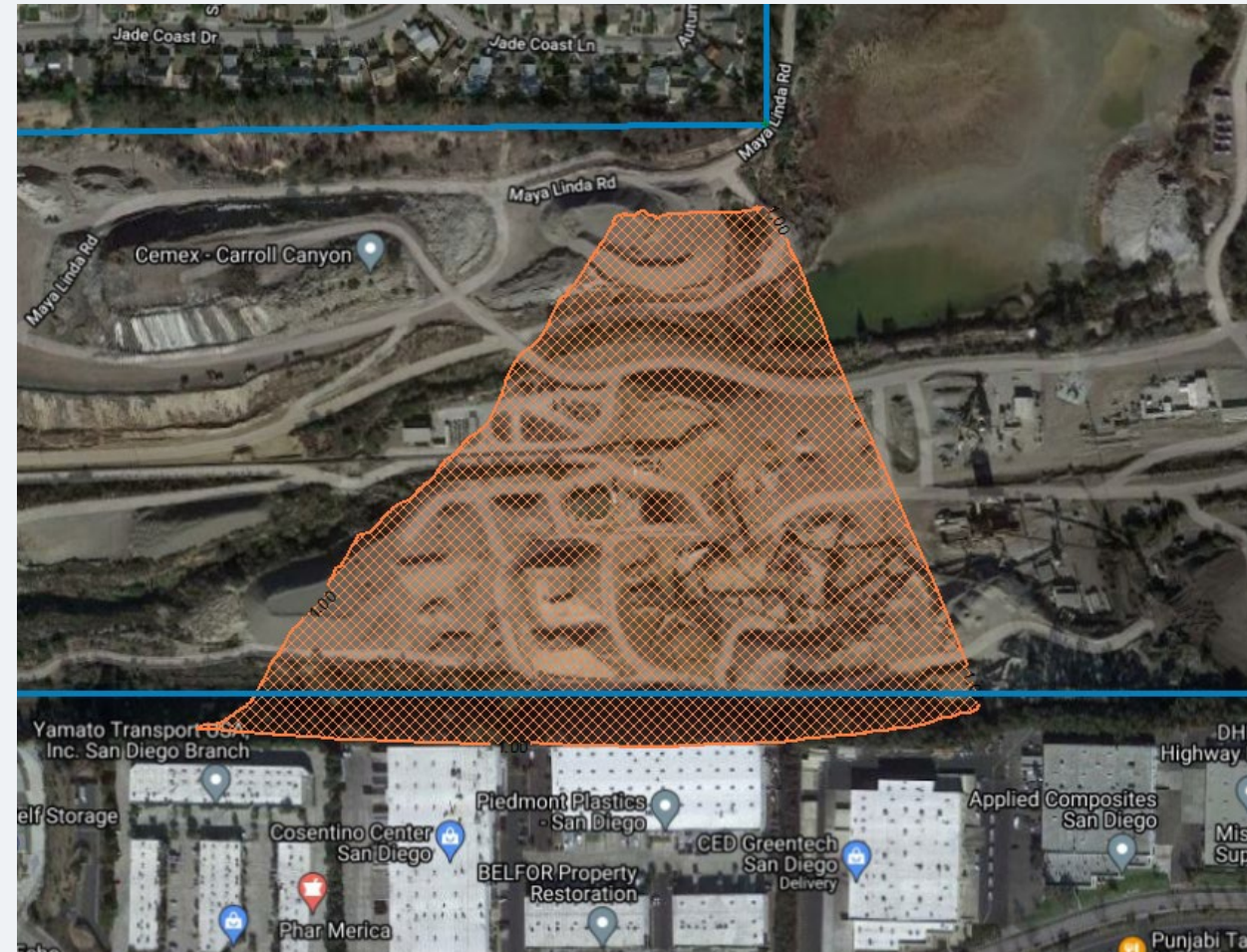
Emission Contributions Worker Acute Non-Cancer Health Hazard Index of 2.63



San Diego County
Air Pollution
Control District



- Nickel
(Aggregate
Plant, Haul
Roads,
Storage
Piles)



Calculated Health Risks



San Diego County
Air Pollution
Control District

Health Risks are Determined Based on where a Person may be exposed

- Residence
- Workplace
- School, Public Park, Library, etc.

Health Risks are also Calculated at the Point of Maximum Impact (PMI)

- Location with the highest risk, that is not a residence, workplace, school, public park, library, etc. For example, in the middle of the ocean or river
- Not used to determine public notification or risk reduction requirements



Point of Maximum Impact





Next Steps



Vulcan Materials Western Division to submit a risk reduction Plan (due August 21, 2022)



Sign up for District Updates to receive notices at <https://bit.ly/3JTGsre>



Consider public comments



District to Review and approve risk reduction plan