



San Diego County Air Pollution Control District

# Hanson Aggregates

Public Meeting

---

September 8, 2022



San Diego County  
**Air Pollution  
Control District**

# Meeting Agenda

## SDAPCD

Purpose of this meeting

Air Toxics and the “Hot Spots” Program

Facility operation, emissions, and health risk for 2017 emissions

Next Steps (Risk Reduction Plan)

---

## Public Comment

Receive public comments

Answer questions

SDAPCD staff and Hanson staff

---



# Air Toxics “Hot Spots” Program (Assembly Bill 2588)



# Air Toxics “Hot Spots” Program

## Public Notifications

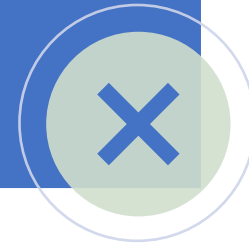
- Potential Health Risks from a Single Source of Air Pollution

Yes



- Potential Health Risks from ALL Sources of Air Pollution

No



# Air Toxics “Hot Spots” Program Health Risks

## Cancer Risk

Calculates the probability that a person would contract cancer if exposed to emissions for 30 years

## Health Hazard Index

Calculated for acute exposure (or short-term health impacts) and chronic exposure (or long-term health impacts)

Index < 1 → no negative health effects

Index ≥ 1 → potential for negative health effects

## Cancer Burden

Estimates of the number of people that can contract cancer within a community that is exposed to the emission levels



# Rule 1210 Public Notification and Risk Reduction Thresholds

Health Risk	Public Notification Threshold	Risk Reduction Threshold
Cancer Risk	10 in one million	10 in one million (100 in one million for emissions prior to CY 2018)
Acute Noncancer Health Hazard Index	1.0	1.0
Chronic Noncancer Health Hazard Index	1.0	1.0
Cancer Burden	1.0	1.0



# Rule 1210 Public Notification and Risk Reduction Thresholds

Health Risk	Public Notification Threshold	Risk Reduction Threshold
Cancer Risk	10 in one million	10 in one million (100 in one million for emissions prior to CY 2018)
Acute Noncancer Health Hazard Index	1.0	1.0
Chronic Noncancer Health Hazard Index	1.0	1.0
Cancer Burden	1.0	1.0



# Elevated Health Risk Hanson's 2017 Emissions

Health Risk	HRA Results	Risk Notification Thresholds	Risk Reduction Thresholds
Maximum Worker Chronic Health Hazard Index	2.58	1.0	1.0





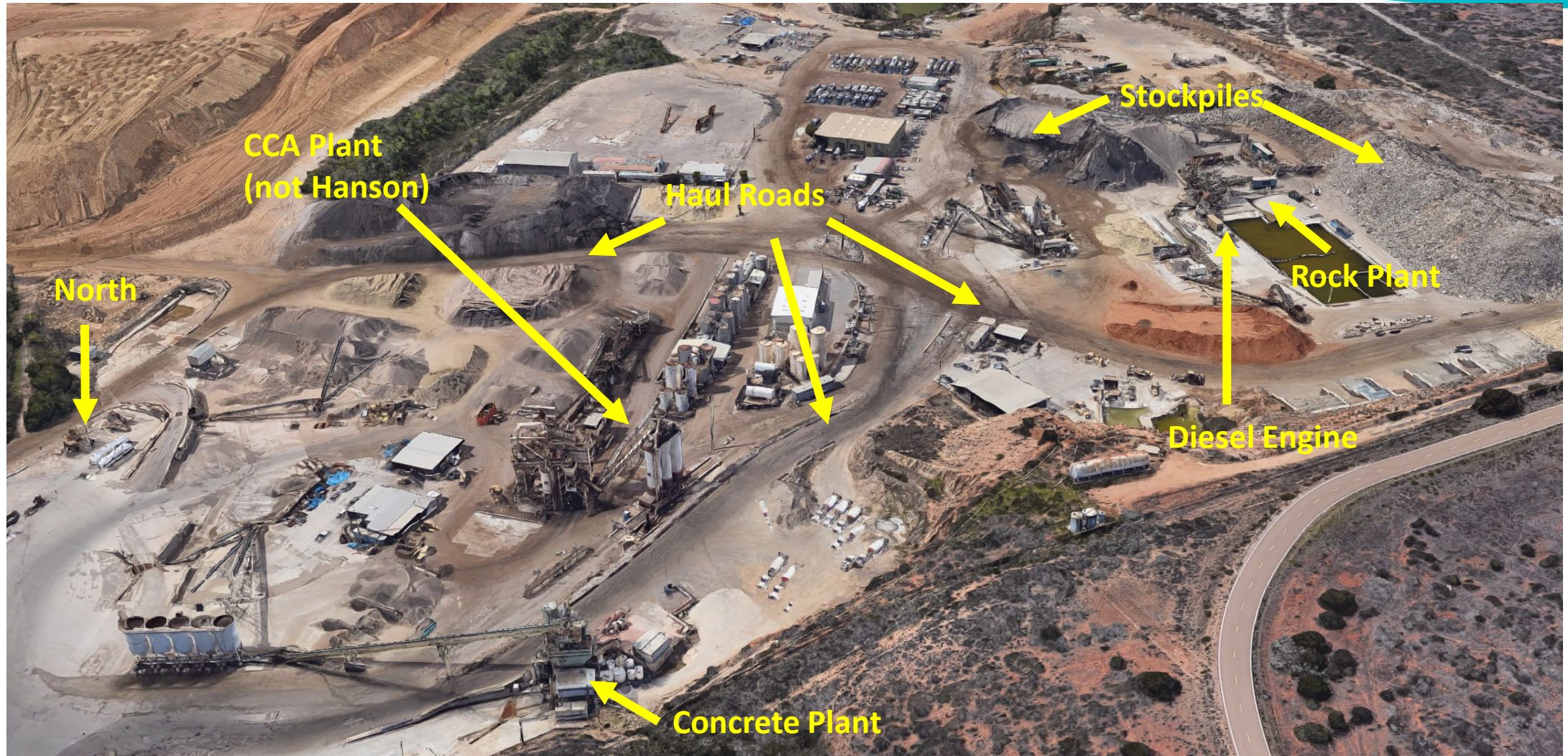
# Hanson Aggregate

- Concrete and Aggregate Processing Plants
- 9229 Harris Plant Road, San Diego, 92145



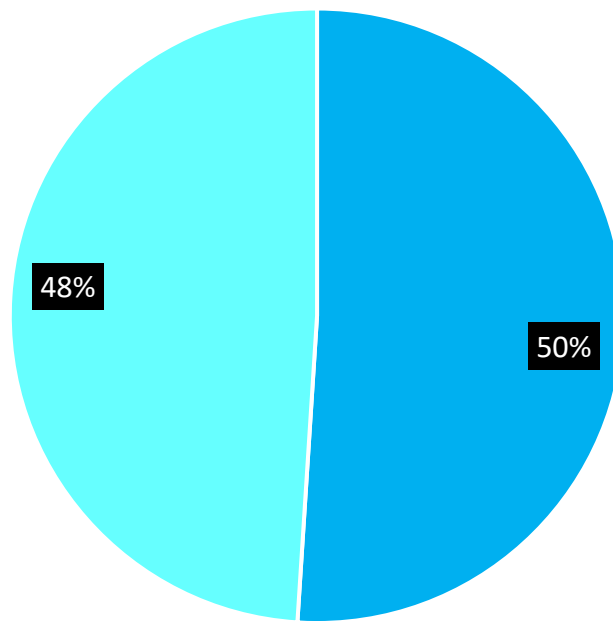


# Hanson's Equipment



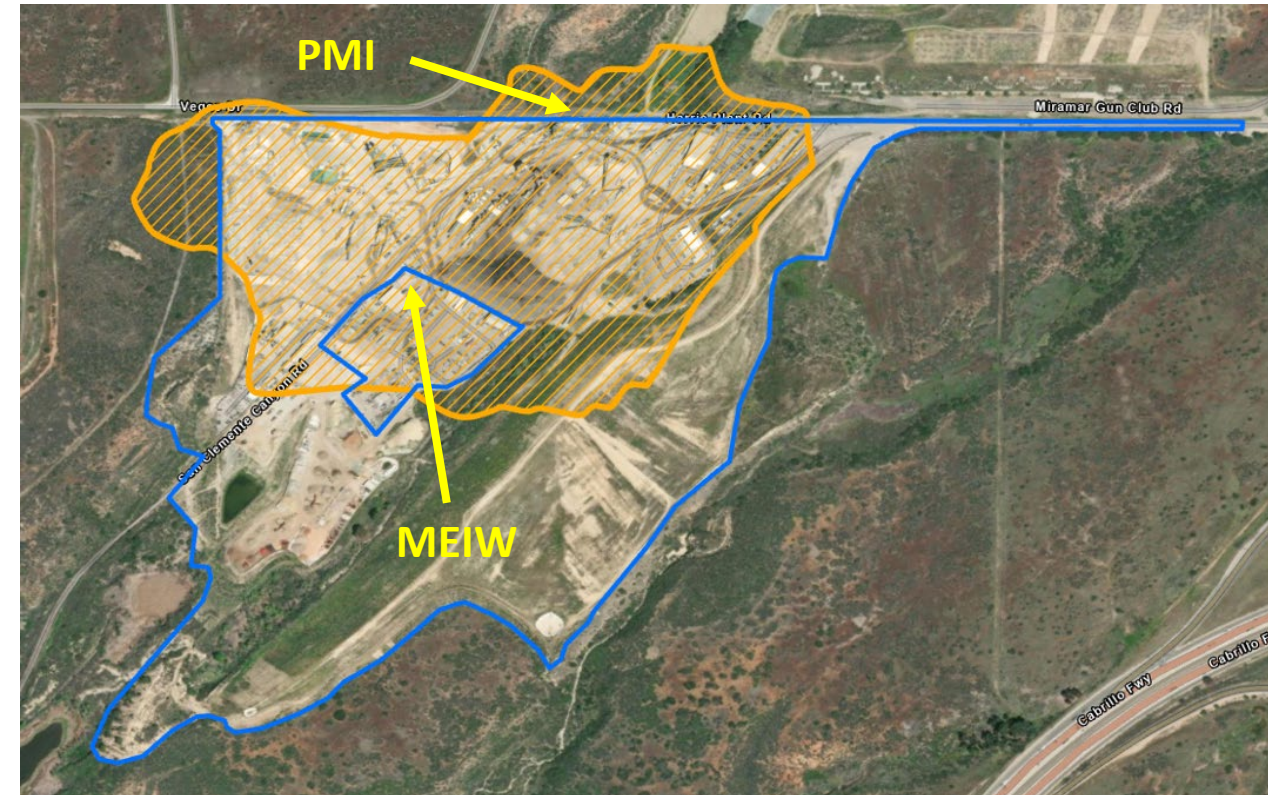


# Emission Contributions Worker Chronic non-Cancer Health Hazard Index of 2.58



■ Arsenic  
(Unpaved Roads,  
Aggregate Plant)

■ Silica (Unpaved Roads,  
Aggregate Plant)



# Next Steps



Hanson to submit a risk reduction plan (RRP, due October 25, 2022), and District to post the RRP for Public Review and Comment

After considering public comments, District to complete review and final approval/disapproval of the RRP

Hanson will conduct annual notifications

District to review and approve Hanson's 2021 emission inventory and determine if a HRA is required

Sign up for District Updates to receive notices at <https://bit.ly/SDAPCD-Updates>

