

San Diego County Air Pollution Control District (District)



San Diego County
**Air Pollution
Control District**

Pacific Ship Repair & Fabrication Public Meeting

February 22, 2022

Meeting Agenda



San Diego County
Air Pollution
Control District

SDAPCD

Purpose of this meeting

Air Toxics and the “Hot Spots” Program

Facility operation, emissions, and health risk for 2015 emissions

Next Steps (Risk Reduction Plan and Notification for 2019 emissions)

Public Comment

Receive public comments

Answer questions

SDAPCD staff and Pacific Ship staff

California Air Toxics “Hot Spots” Program (Assembly Bill 2588)



San Diego County
Air Pollution
Control District

Program Goal

- Protects the public’s right to know about toxic air contaminant emissions and how these emissions can potentially impact public health; and,
- Requires health risk reductions for facilities with elevated health risks

Toxic Air Contaminants

- Chemicals emitted into the atmosphere that may cause adverse health effects

Adverse Health Effect

- Range from minor eye or throat irritation, shortness of breath, or headaches, to cancer, birth defects, or damage to organs

California Air Toxics “Hot Spots” Program



San Diego County
Air Pollution
Control District

**Quantify Toxic
Air Contaminant
Emissions**

**Identify Facilities
that may Present
Public Health
Concerns**

**Request Health
Risk
Assessments –
Review and
Approve**

**Implement
Public
Notification and
Risk Reduction
Requirements**

Air Toxics “Hot Spots” Program Health Risks



San Diego County
Air Pollution
Control District

Cancer Risk

Calculates the probability that a person would contract cancer if exposed to emissions for 30 years

Health Hazard Index

Calculated for acute exposure (or short-term health impacts) and chronic exposure (or long-term health impacts)

Index < 1 → no adverse health effects

Index ≥ 1 → potential for adverse health effects

Cancer Burden

Estimates of the number of people that can contract cancer within a community that is exposed to the emission levels

Public Notification and Risk Reduction Thresholds

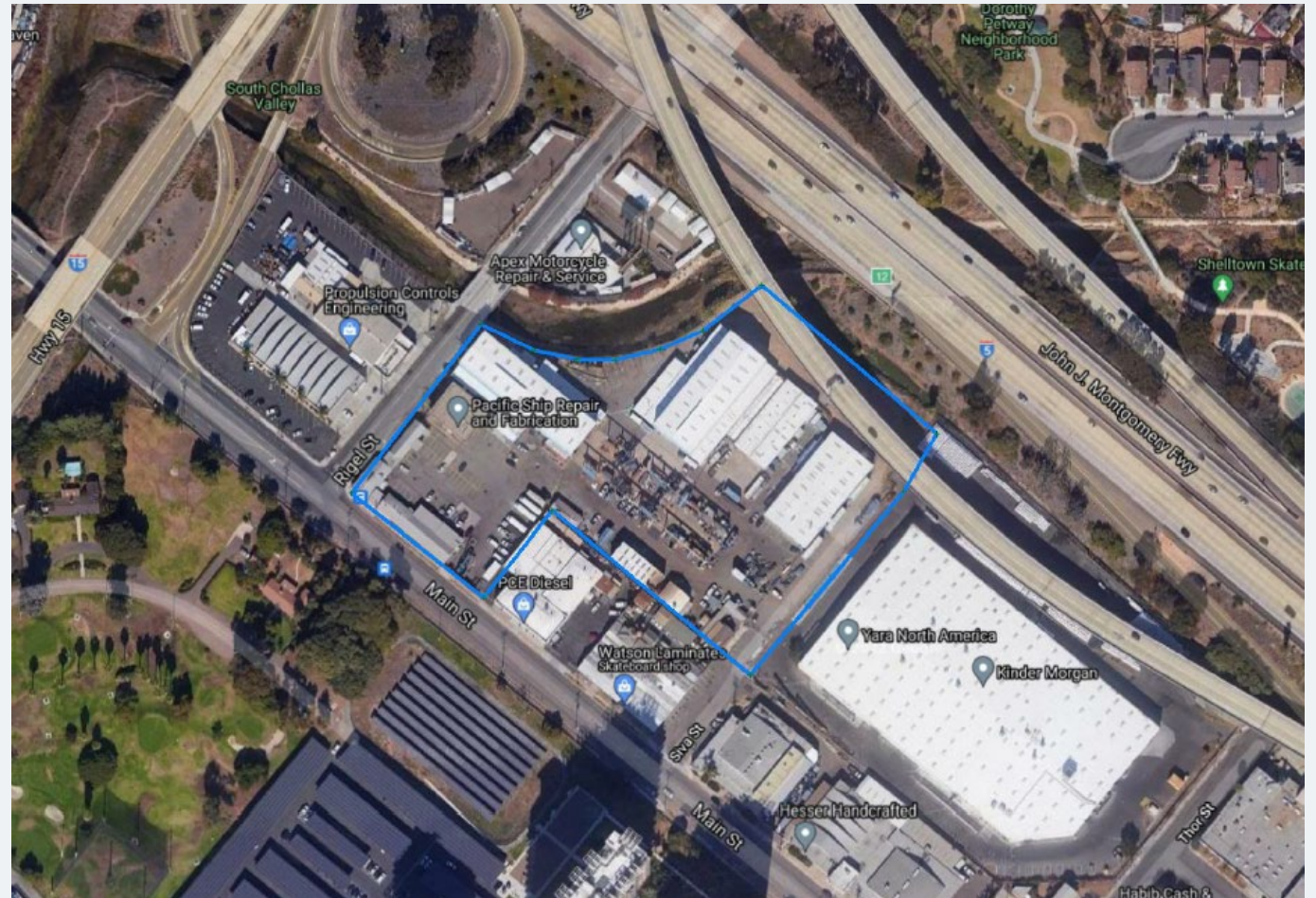


San Diego County
Air Pollution
Control District

Health Risk	Public Notification Threshold	Risk Reduction Threshold
Cancer Risk	10 in one million	10 in one million (100 in one million for emissions prior to CY 2018)
Acute Noncancer Health Hazard Index	1.0	1.0
Chronic Noncancer Health Hazard Index	1.0	1.0
Cancer Burden	1.0	1.0

Pacific Ship Equipment

- Ship component repair and fabrication facility
 - Abrasive blasting
 - Marine coating
 - Solvent cleaning
 - Welding



Health Risk Assessment Results for Pacific Ship 2015 Emissions

Maximum Residential Cancer Risk	1.28 in one million
Maximum Worker Cancer Risk	15.6 in one million
Maximum Residential Chronic Non-Cancer Health Hazard Index	0.0284
Maximum Worker Chronic Non-Cancer Health Hazard Index	2.01
Maximum Residential Acute Health Hazard Index	0.59
Maximum Worker Acute Health Hazard Index	2.75
Population Excess Cancer Burden	0.001

Maximum Worker Cancer Risk

15.6 in one million

Pollutant	Contribution
Cadmium	59%
Nickel	36%
Chromium, Hexavalent	4%

Source	Contribution
Abrasive Blasting	96%
Welding	4%

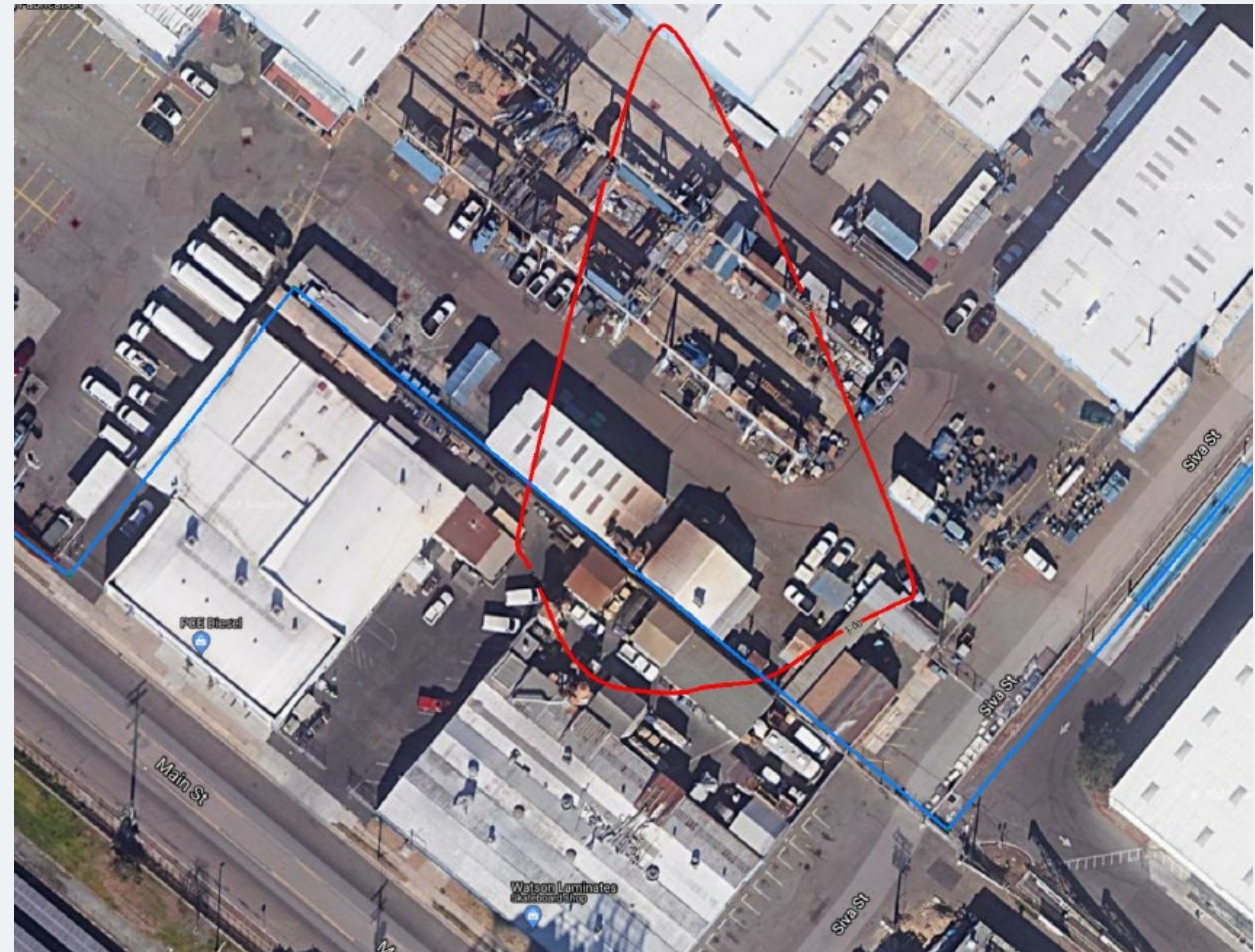


Worker Chronic Non-Cancer Health Risk

Health Hazard Index: 2.01

Pollutant	Contribution
Nickel	94%
Cadmium	6%

Source	Contribution
Abrasive Blasting	100%

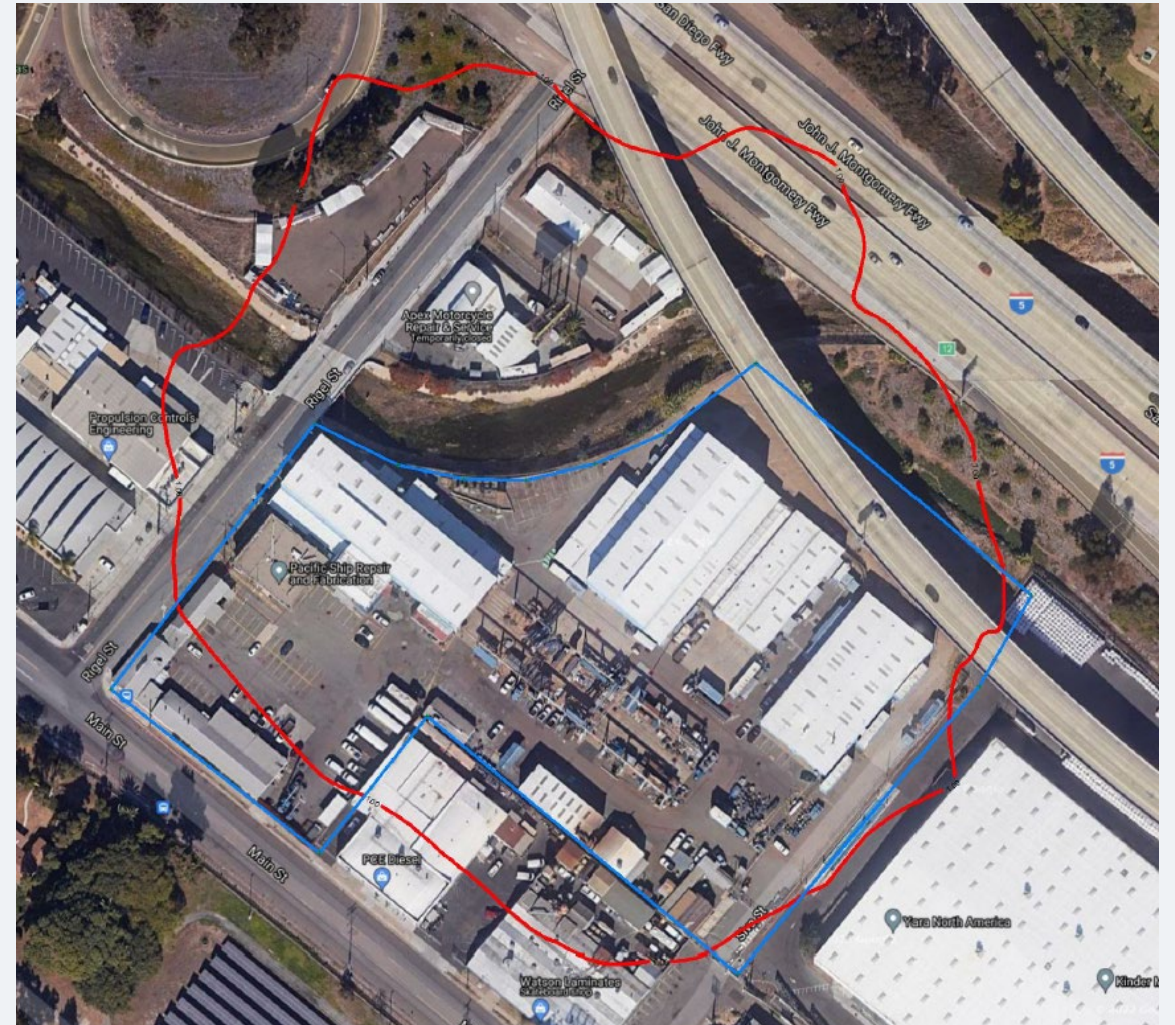


Worker Acute Non-Cancer Health Risk

Health Hazard Index: 2.75

Pollutant	Contribution
Nickel	100%

Source	Contribution
Abrasive Blasting	74%
Welding	26%





Next Steps

