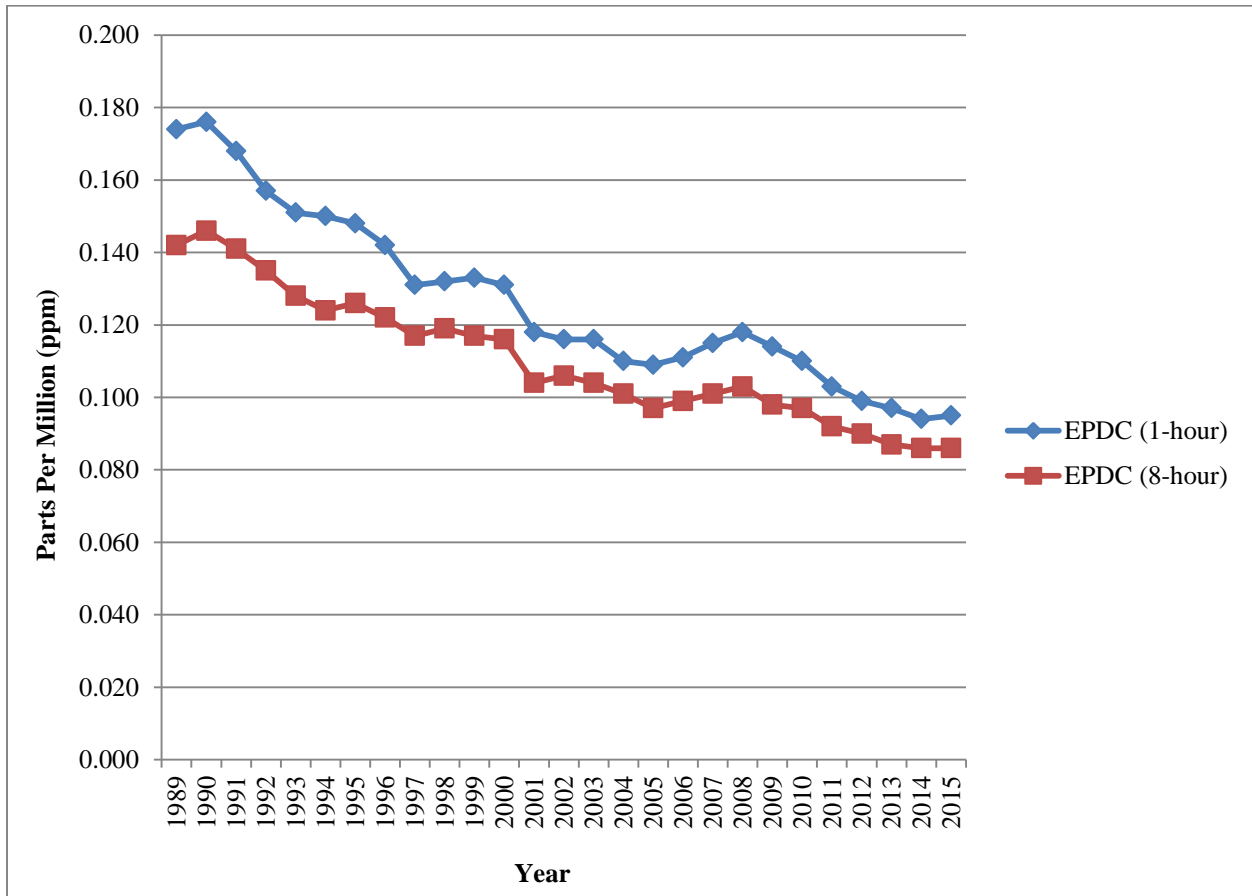


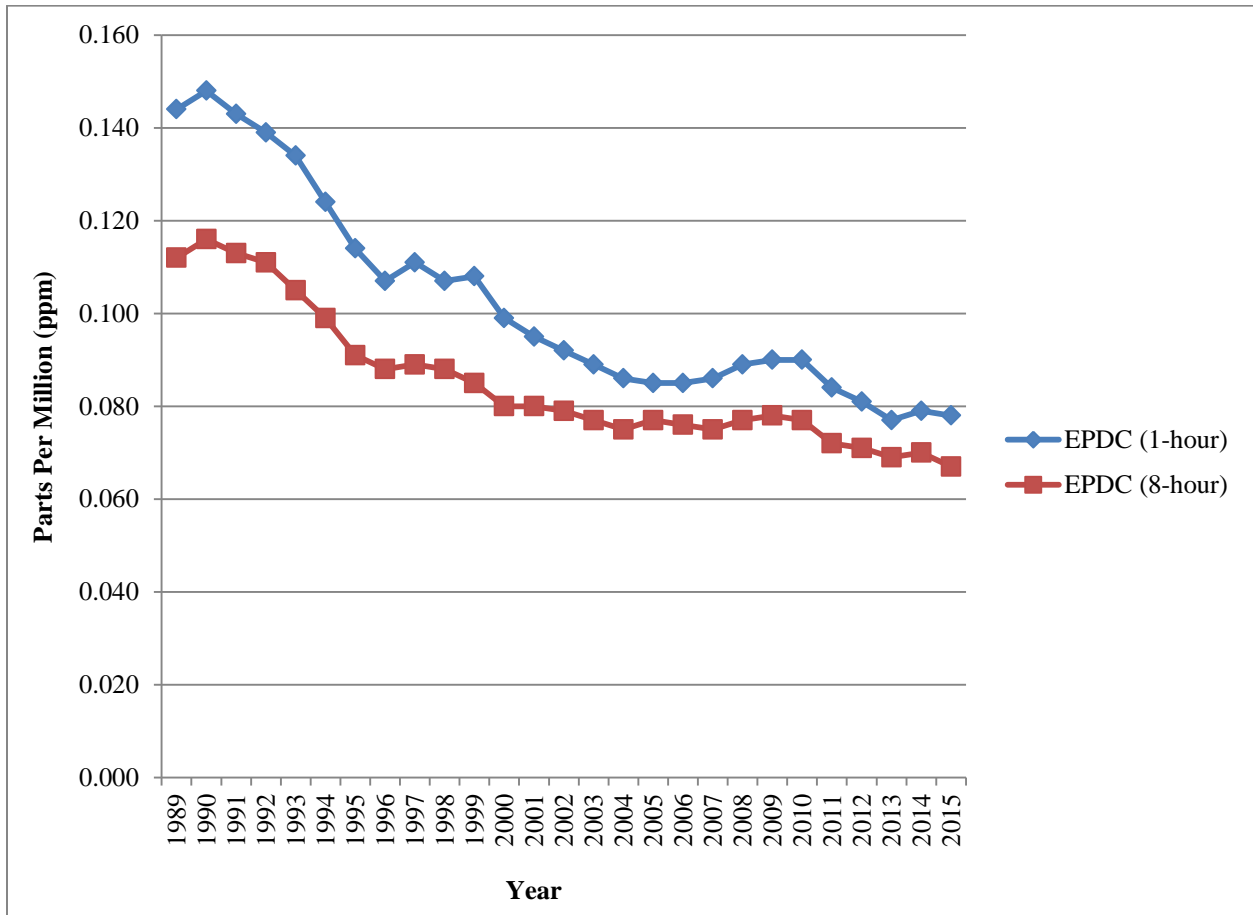
**ATTACHMENT I****CHARTS OF SITE-SPECIFIC OZONE  
EXPECTED PEAK DAY CONCENTRATIONS**

Site-specific air quality trends through 2015 at each of the five long-term monitoring sites are presented as charted year-to-year changes in the Expected Peak Day Concentration (EPDC), in Figures I-1 through I-5, on the following pages. The figures indicate ongoing improvement at all sites since 1989. The charts present data back to the first year for which data are available for each site.

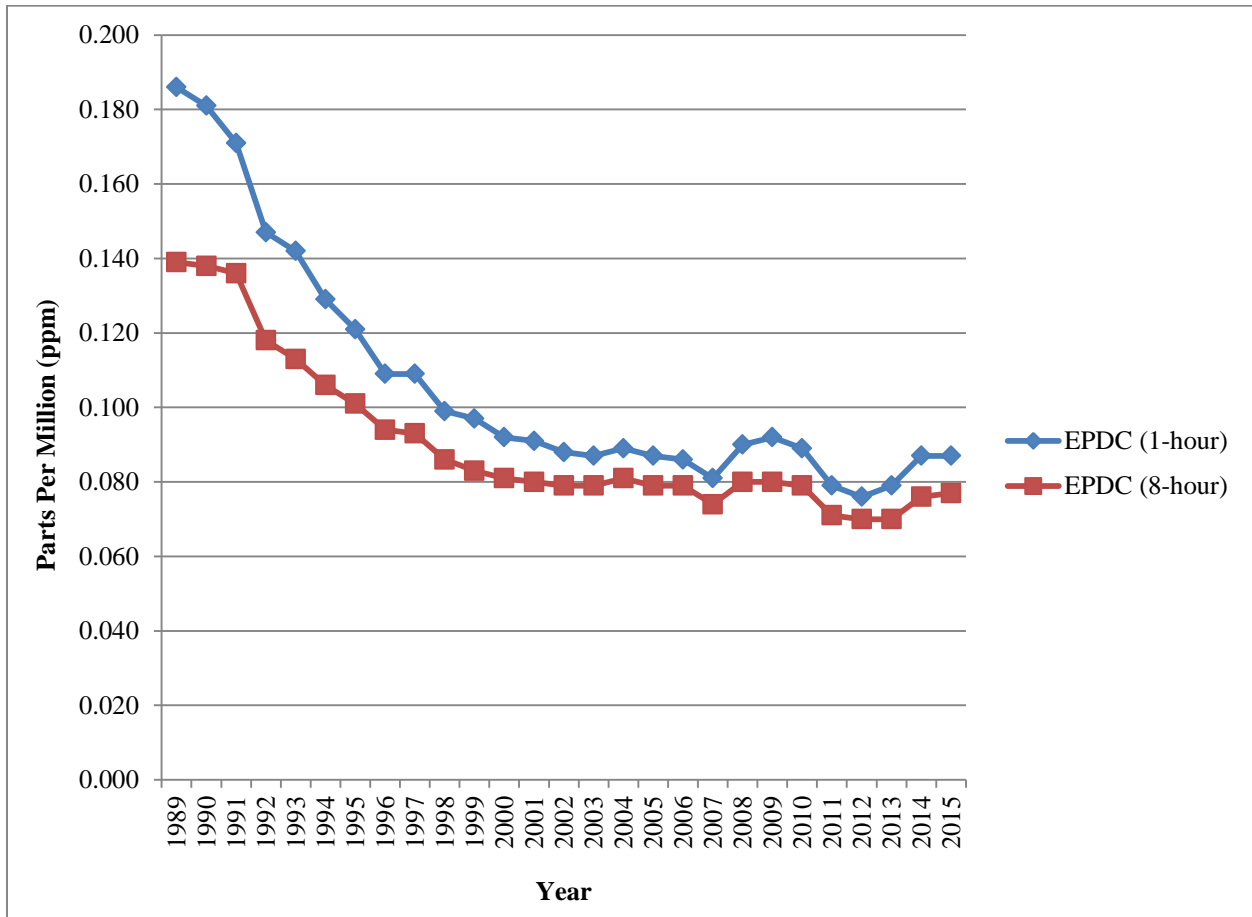
**Figure I-1**  
**Expected Peak Day Concentration, Alpine Monitoring Site**



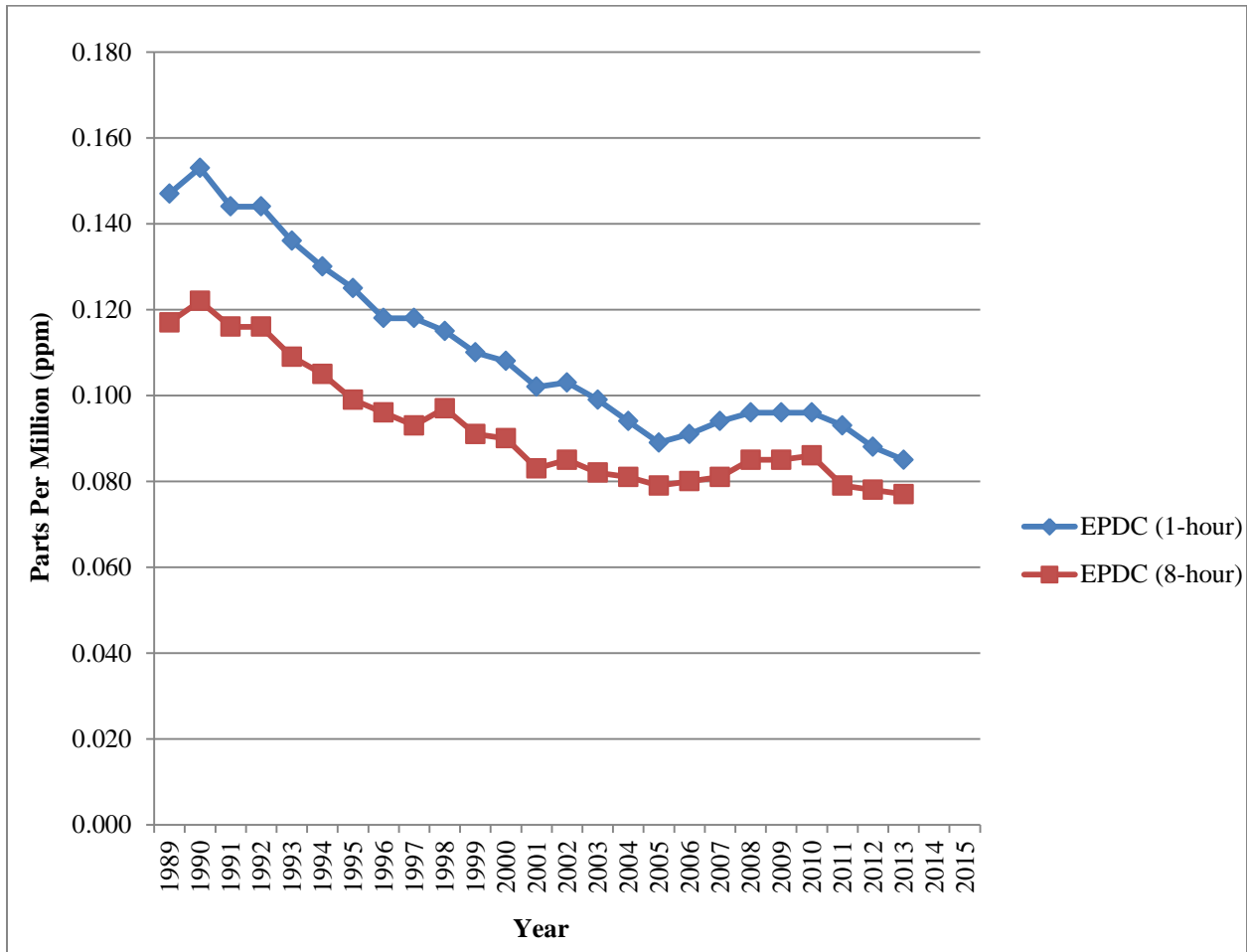
**Figure I-2**  
**Expected Peak Day Concentration, Chula Vista Monitoring Site**



**Figure I-3  
Expected Peak Day Concentration, Del Mar Monitoring Site**

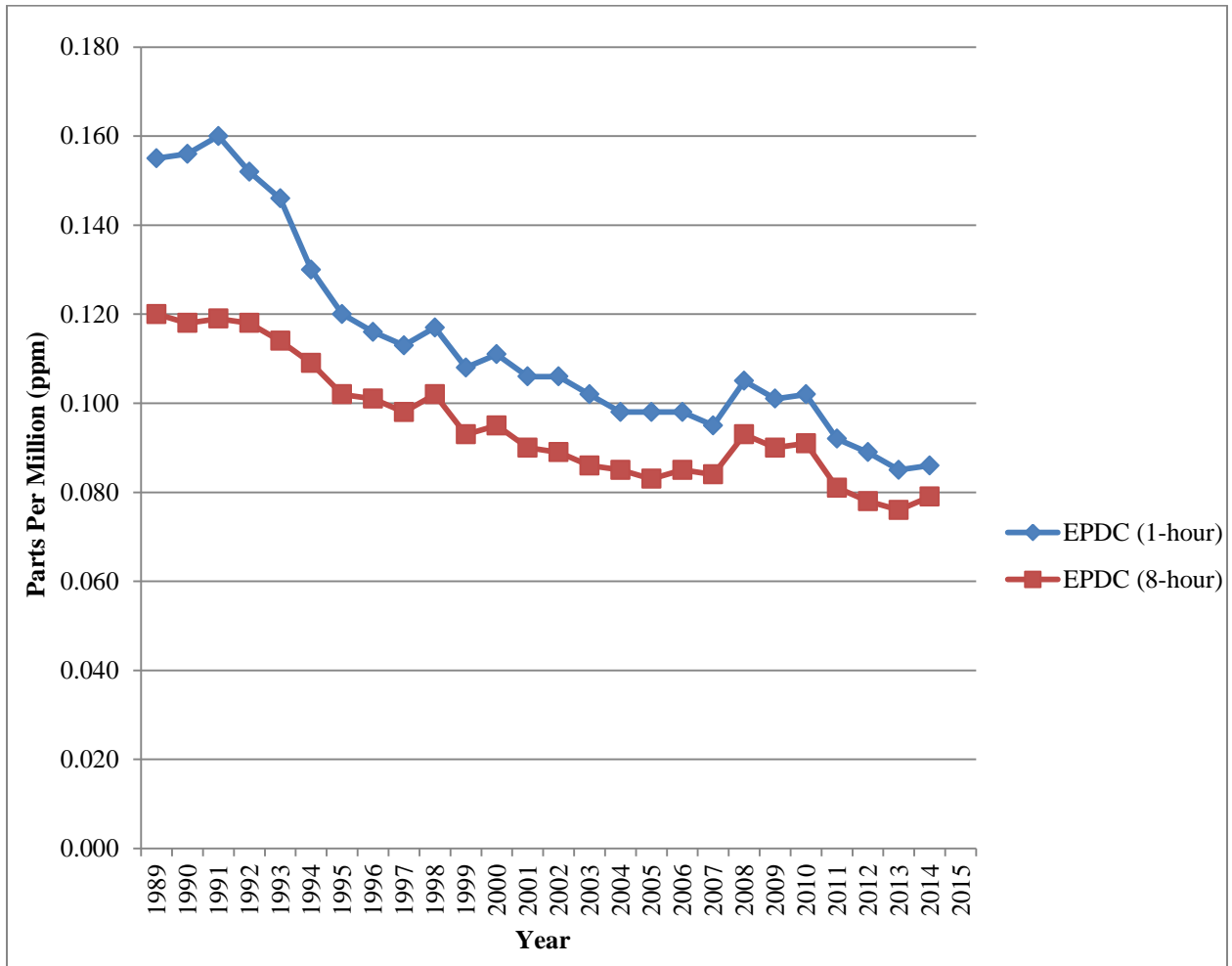


**Figure I-4**  
**Expected Peak Day Concentration, El Cajon Monitoring Site**



\*2014-2015 values not included due to a change in location (Redwood Dr. to Floyd Smith).

**Figure I-5  
Expected Peak Day Concentration, Escondido Monitoring Site**



\*2015 values not included due to the removal of monitor in October 2015.