

ATTACHMENT I

CHARTS OF SITE-SPECIFIC OZONE EXPECTED PEAK DAY CONCENTRATIONS

Site-specific air quality trends through 2006 at each of the six long-term monitoring sites are presented as charted year-to-year changes in the Expected Peak Day Concentration (EPDC), in Figures I-1 through I-6, on the following pages. The figures indicate ongoing improvement at all sites, with the most substantial improvement occurring since 1990. The charts present data back to the first year for which data are available for each site.

Figure I-1
Expected Peak Day Concentration
Alpine Monitoring Site

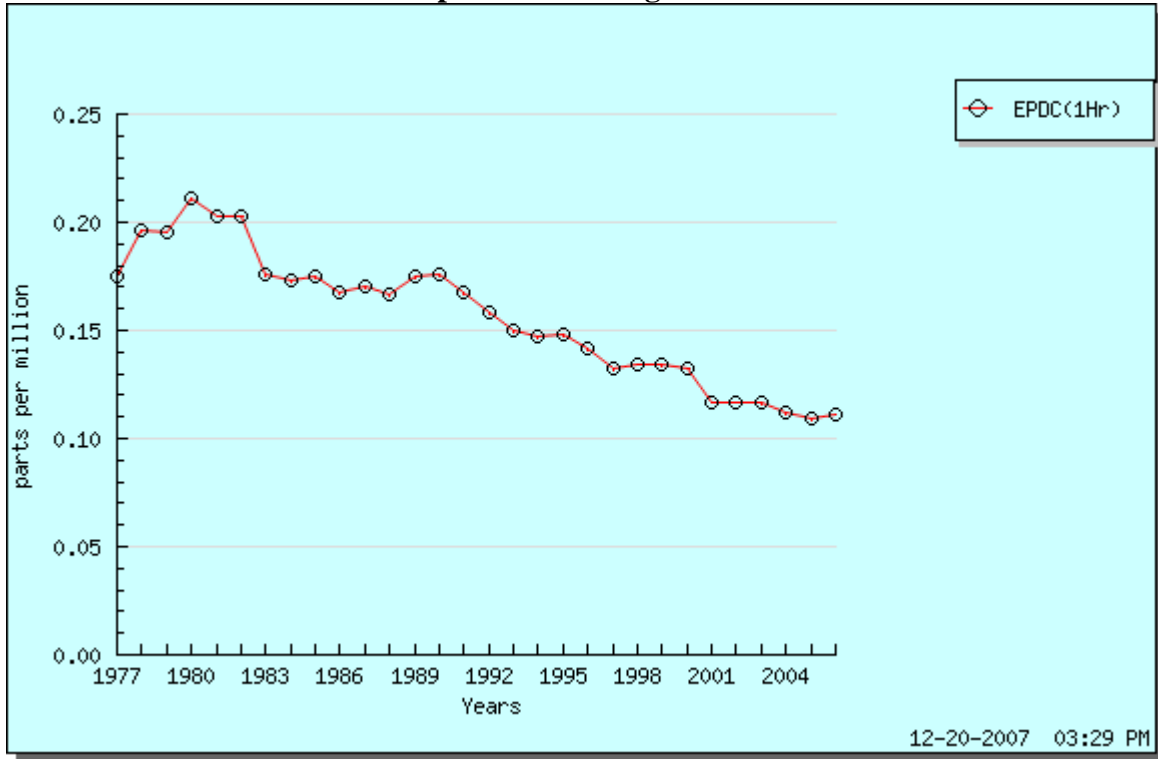


Figure I-2
Expected Peak Day Concentration
Chula Vista Monitoring Site

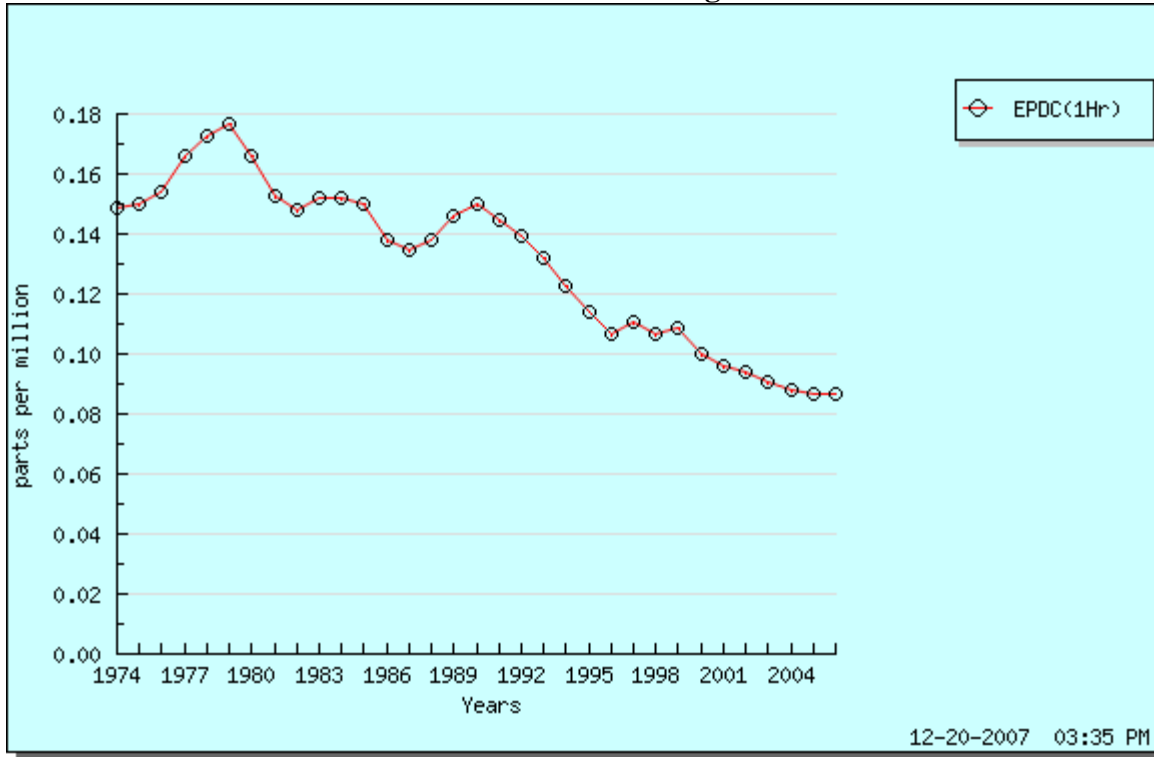


Figure I-3
Expected Peak Day Concentration
Del Mar Monitoring Site

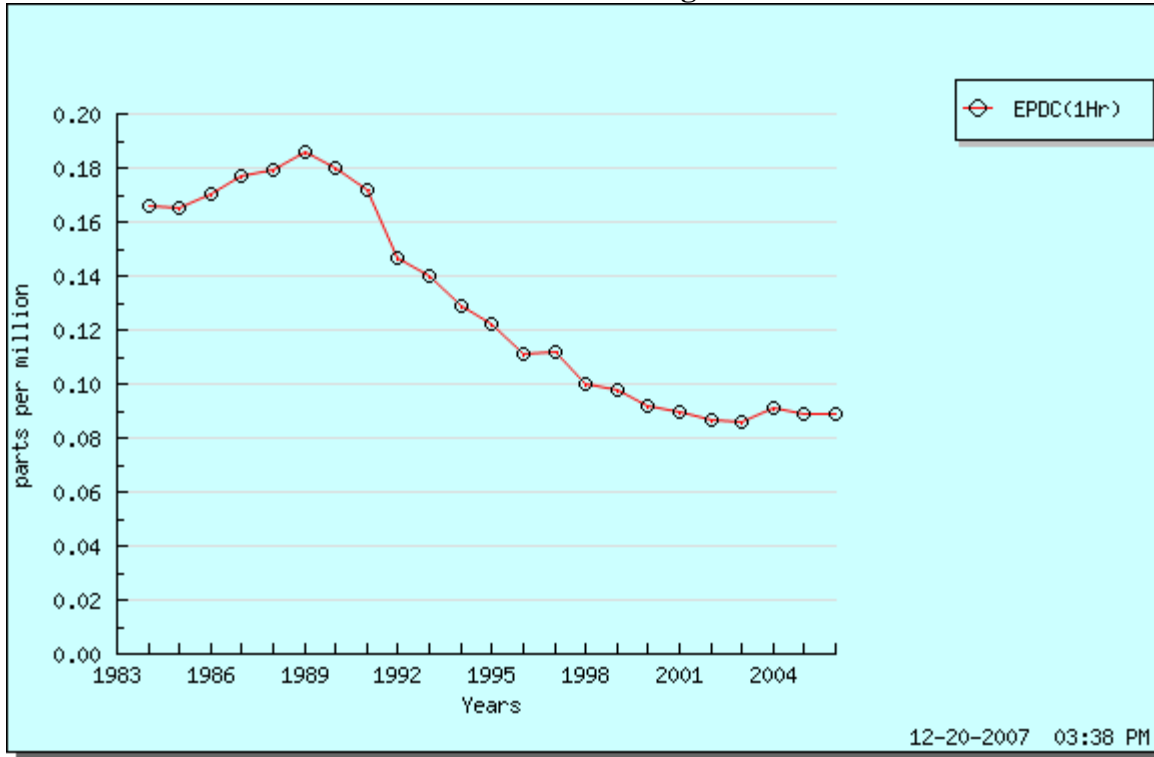


Figure I-4
Expected Peak Day Concentration
El Cajon Monitoring Site

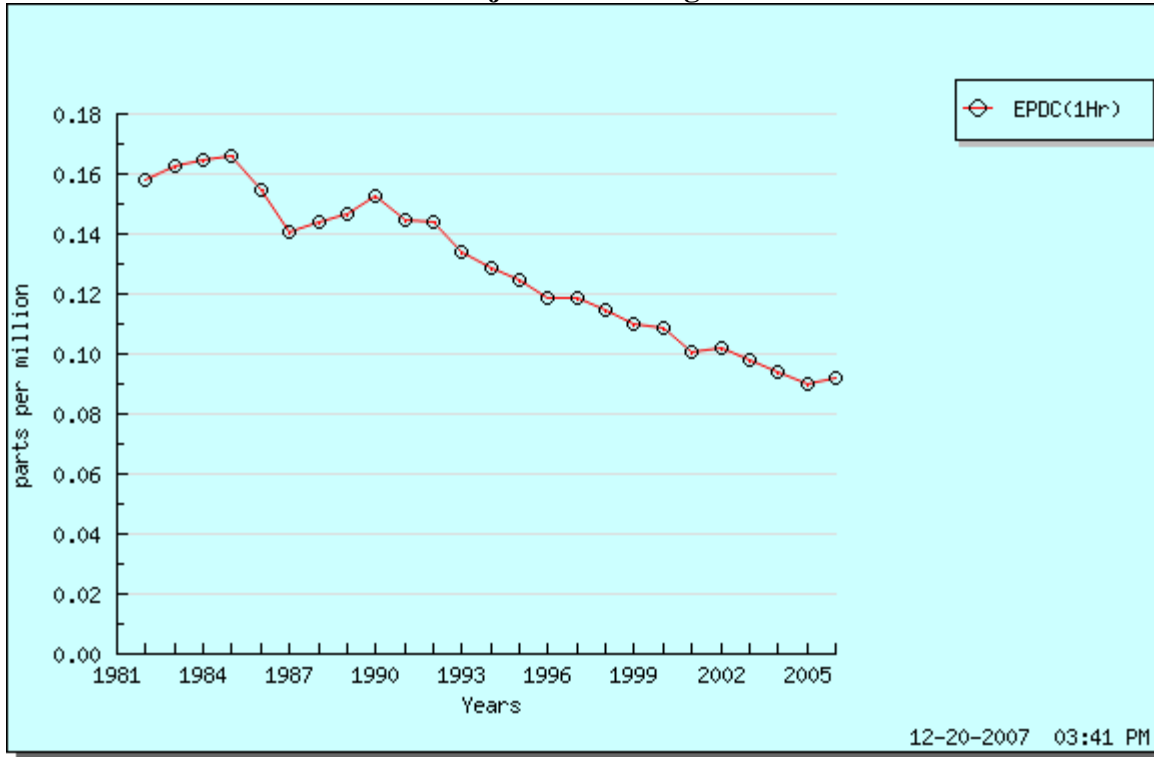


Figure I-5
Expected Peak Day Concentration
Escondido Monitoring Site

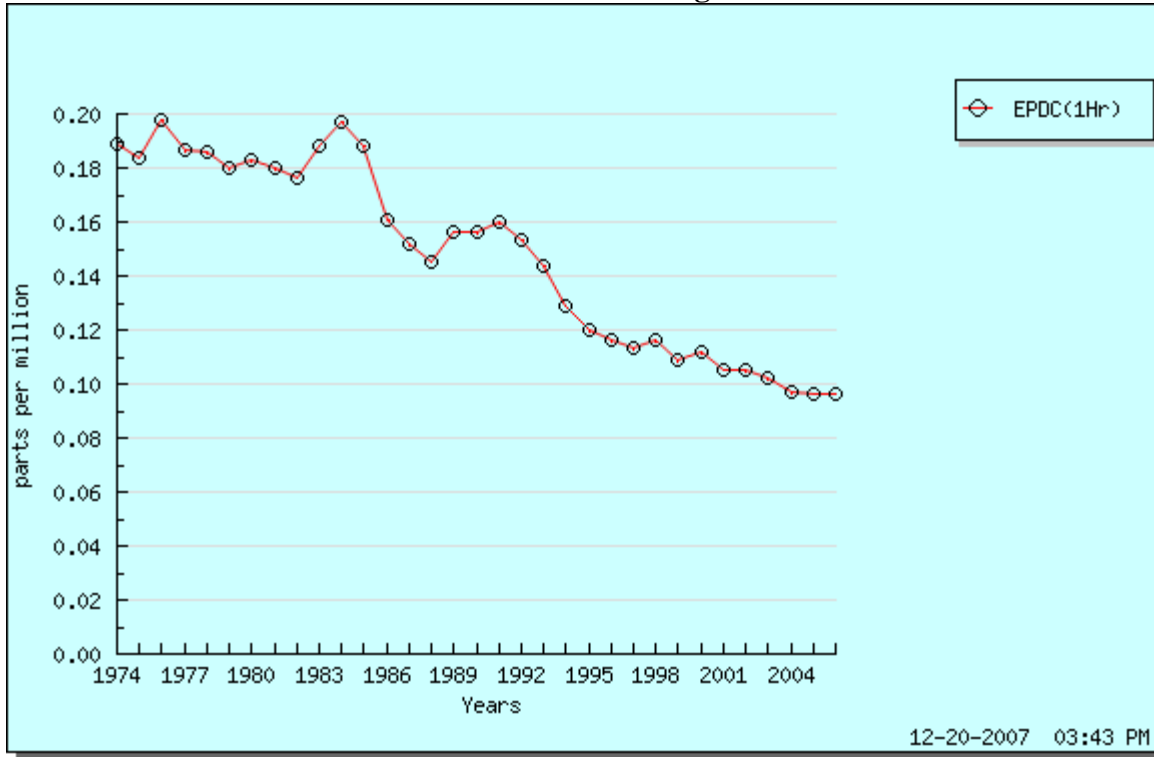


Figure I-6
Expected Peak Day Concentration
San Diego Kearny Mesa Monitoring Site

