



AB 617 AIR MONITORING UPDATE

November 17, 2020

**ACTUALIZACIÓN
DE MONITOREO DEL AIRE AB 617**

17 de noviembre de 2020

LEGEND

- **GREEN**= Operational
- **YELLOW**= Signed MOU; awaiting (see comments)
- **BLUE**= Undergoing talks; awaiting (see comments)
- BC= Black Carbon
- EC= Elemental Carbon
- OC= Organic Carbon
- VOCs= Volatile Organic Compounds
- Cr⁺⁶= Hexavalent Chromium
- Met= Meteorological parameters

- **Bold & large font**= samples being collected & analyzed
- *Italic & underline*= samples being collected & stored until a laboratory is secured
- Regular font= planned but not operational

- 1:6= one sample day (24-hrs) every 6 days
- 24/7= runs continuously

LEYENDA

- **VERDE**= Operacional
- **AMARILLO**= MOU Firmado; pendiente (ver comentarios)
- **AZUL**= En negociaciones; pendiente(ver comentarios)
- BC= Carbono Negro
- EC= Carbono Elemental
- OC= Carbono Organico
- VOCs= Compuestos orgánicos volátiles
- Cr⁺⁶= Cromo hexavalente
- Met= Parámetros meteorológicos

- **Fuente Negrita & Grande** = muestras recogidas y analizadas
- *Cursiva y subrayado* = muestras recolectadas y almacenadas hasta que se asegure un laboratorio
- Fuente regular = planificada pero no operativa

- 1:6= un día de muestra (24 horas) cada 6 días
- 24/7= corre continuamente

Site Information

Información de Sitios

	Site Name	Abbrev.	Address	Lat./Long.		Comments	Operational Timeline
Portside	Sherman Elementary School	SES	301 22nd St., San Diego, CA 92102	32°42'36.63"N	117° 8'33.59"W	none	Operating
	10th Avenue Marine Terminal	MAR	801 Terminal St., San Diego, CA 92101	32°42'2.56"N	117° 9'39.97"W	none	Operating
	Caltrans-Chavez	LCC	917-19 Cesar E Chavez Pkwy., San Diego, CA 92113	32°42'3.69"N	117° 8'40.11"W	none	Operating
	Fire Station #19	OVB	3434 Ocean View Blvd., San Diego, CA 92113	32°42'7.66"N	117° 7'10.69"W	none	Operating
	Caltrans - 29th Street	CTB	2898 1/3 Boston Ave., San Diego, CA 92113	32°41'38.82"N	117° 7'54.30"W	Scope of construction work is being written now.	2 nd - 3 rd Qtr 2021
	Burbank Elementary School	BES	2146 Julian Ave., San Diego, CA 92113	32°42'4.24"N	117° 8'17.47"W	Expect bidders on the job around the end of the month.	2 nd - 3 rd Qtr 2021
	National City Train Depot Museum	NCD	922 West 23rd St., National City, CA 91950	32°39'34.30"N	117° 6'40.54"W	In talks with the NC City Planner to get an address	2 nd - 3 rd Qtr 2021
	National City Middle School	NRV	none at this time	none at this time	none at this time	Under review by School Authorities.	unknown
	Sweetwater High School	NCM	none at this time	none at this time	none at this time	Under review by School Authorities	unknown
	Navy RV Parking Lot	SWH	none at this time	32°40'39.60"N	117° 6'55.96"W	Request to waive fees with Navy	unknown
South SD	Fire Station #29	SAY	198 West San Ysidro Blvd., San Diego, CA 92173	32°33'10.04"N	117° 2'50.26"W	Operating Black Carbon now. Constuction-1 st Qtr 2021	2 nd - 3 rd Qtr 2021
	CHP Safety Check Station	CHP	2335 Enrico Fermi Dr., San Diego, CA 92154	32°33'13.70"N	116°55'34.82"W	Working with CHP to find solutions to our power needs	3 rd - 4 th Qtr 2021

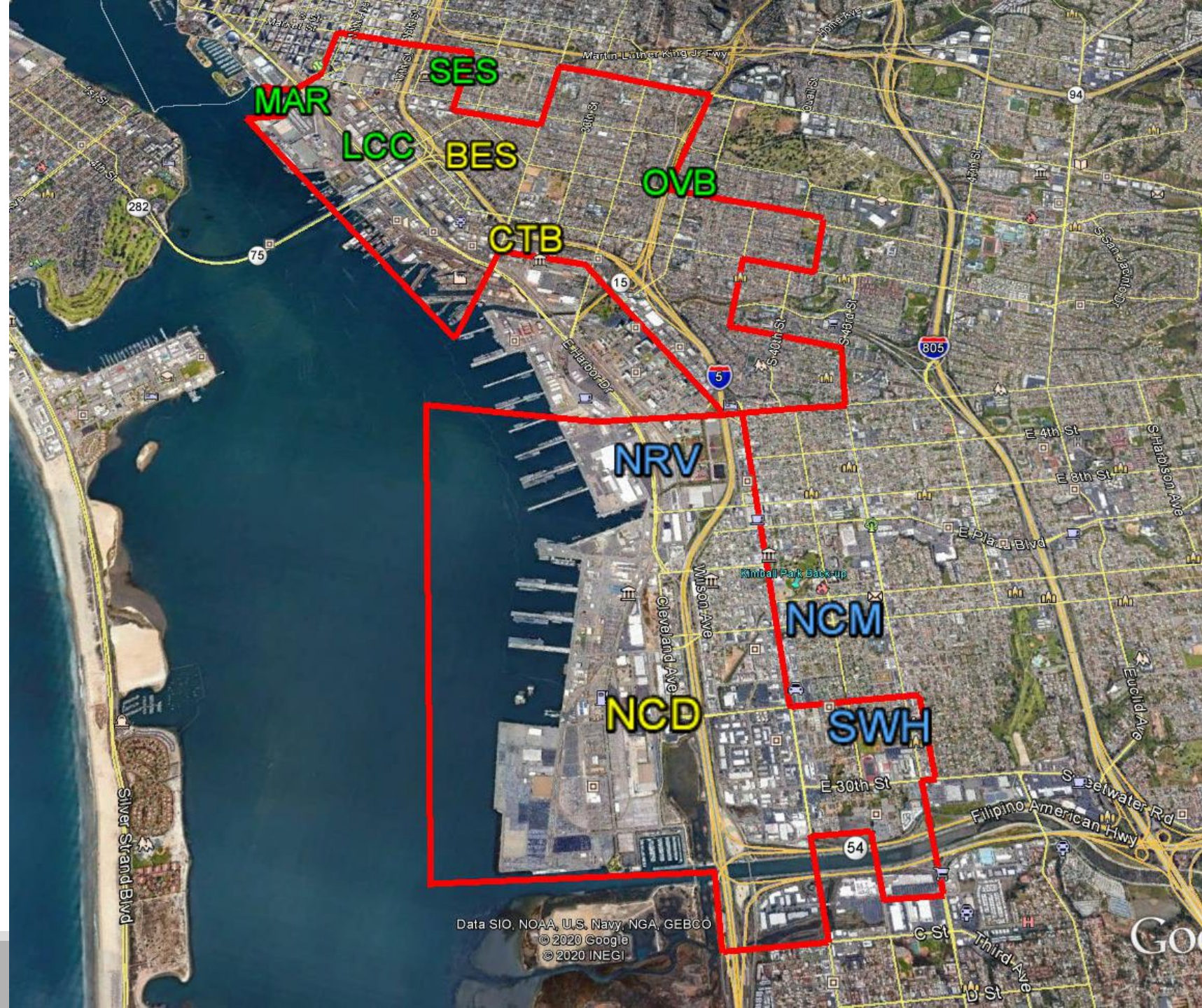
Site Sampling Parameters

Parámetros de muestreo del sitio

Site		Parameters							
Abbrev.	Name	BC	EC	OC	Ions	Metals	VOCs	Cr ⁺⁶	Met
SES	Sherman Elementary School	24/7	<u>1:6</u>	<u>1:6</u>	<u>1:6</u>	1:6	1:6	1:6 or 1:12	24/7
MAR	10th Avenue Marine Terminal	24/7	<u>1:6</u>	<u>1:6</u>	-	1:6	1:6	-	24/7 temp
LCC	Chicano Park at Cesar Chavez Pkwy	24/7	<u>1:6</u>	<u>1:6</u>	-	1:6	1:6	-	24/7 temp
OVB	Ocean View Blvd. Fire Station #19	24/7	-	-	-	-	-	-	-
CTB	Caltrans – Boston & 29th Street	24/7	1:6	1:6	-	1:6	1:6	-	-
BES	Burbank Elementary School	24/7	1:6	1:6	-	1:6	1:6	-	-
NCD	National City Train Depot Museum	24/7	1:6	1:6	-	1:6	1:6	-	-
NRV	Navy RV Parking Lot	24/7	1:6	1:6	-	1:6	1:6	-	-
NCM	National City Middle School	24/7	1:6	1:6	-	1:6	1:6	-	-
SWH	Sweetwater High School	24/7	1:6	1:6	-	1:6	1:6	-	-
SAY	San Ysidro Fire Station #29	24/7	1:6	1:6	-	1:6	1:6	-	24/7
CHP	CHP Safety Check Station	24/7	1:6	1:6	-	1:6	1:6	-	

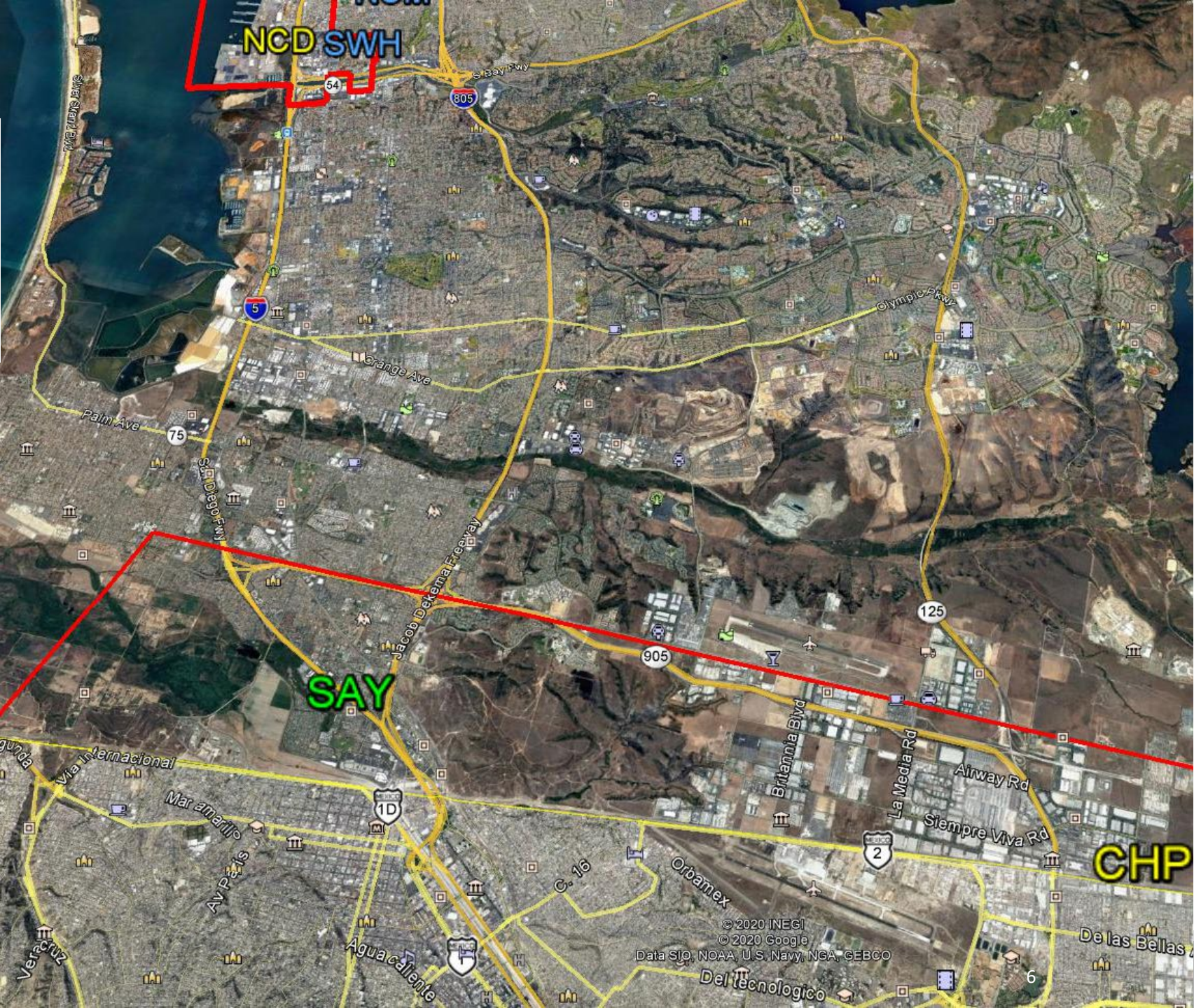
Site Map (Portside)

Mapa de Sitios (Portuarios)



Site Map (South San Diego)

Mapa de Sitios (Sur de San Diego)



Carbon

Black Carbon and Elemental Carbon are man-made carbon.

- Both from tailpipe emissions.
- Black Carbon (BC) is measured using light technology and can get continuous measurements.
- Elemental Carbon (EC) is measured via thermal technology. There are no continuous thermal analyzers.
- Organic Carbon (OC) is naturally occurring carbon.

Carbono

- El carbono negro y el carbono elemental son carbono artificial.
- Ambos de las emisiones del tubo de escape.
- El carbono negro (BC) se mide mediante tecnología de luz y puede obtener mediciones continuas.
- El carbono elemental (EC) se mide mediante tecnología térmica. No hay analizadores térmicos continuos.
- El carbono orgánico (OC) es carbono natural

Metals

At All Sites
Arsenic
Beryllium
Cadmium
Lead
Manganese
Nickel
Antimony
Barium
Chromium (total)
Cobalt
Molybdenum
Selenium
Tin
Vanadium

Additional Metals for CARB Source Apportionment Needs only at Sherman Elementary School
Aluminum
Calcium
Copper
Iron
Magnesium
Potassium
Sodium
Strontium
Titanium
Zinc

Metales

En todos los sitios
Arsenico
Berilia
Cadmio
Plomo
Manganeso
Niquel
Antimonio
Bario
Cromo (total)
Cobalto
Molibdeno
Selenio
Estaño
Vanadio

Metales adicionales para las necesidades de distribución de fuentes de CARB solo en Escuela Primaria Sherman
Aluminio
Calcio
Cobre
Hierro
Magnesio
Potasio
Sodio
Estroncio
Titanio
Zinc

Volatile Organic Compounds

Compuestos Orgánicos Volátiles

At All Sites			
1	1,1,1-trichloroethane	30	cis-1,2-dichloroethene
2	1,1,2,2-tetrachloroethane	31	cis-1,3-dichloropropene
3	1,1,2-trichloro-1,2,2-trifluoroethane (CFC-113)	32	dichlorodifluoromethane (F-12)
4	1,1,2-trichloroethane	33	ethyl acetate
5	1,1-dichloroethane	34	ethyl benzene
6	1,1-dichloroethene	35	hexachloro-1,3-butadiene
7	1,2,4-trichlorobenzene	36	isoprene
8	1,2,4-trimethylbenzene	37	o-xylene
9	1,2-dibromoethane	38	m-xylene
10	1,2-dichloroethane	39	p-xylene
11	1,2-dichloropropane	40	m-dichlorobenzene
12	1,2-dichlorotetrafluoroethane (F-114)	41	methyl methacrylate
13	1,3,5-trimethylbenzene	42	methyl tertiary butyl ether
14	1,3-butadiene	43	methylene chloride (dichloromethane)
15	2-butanone	44	naphthalene
16	4-ethyltoluene	45	n-hexane
17	4-methyl-2-pentanone	46	o-dichlorobenzene
18	acetone	47	p-dichlorobenzene (1,4-dichlorobenzene)
19	acetonitrile	48	styrene
20	acrolein	49	tetrachloroethylene
21	acrylonitrile	50	tetrachloromethane
22	benzene	51	toluene
23	benzyl chloride	52	trans-1,2-dichloroethene
24	bromoform	53	trans-1,3-dichloropropene
25	bromomethane (methyl bromide)	54	trichloroethylene
26	chlorobenzene	55	trichlorofluoromethane (F-11)
27	chloroethane	56	vinyl acetate
28	chloroform	57	vinyl chloride
29	chloromethane		

Other Parameters

Ions

- Only at Sherman Elementary School for at least one complete calendar year for CARB Source Apportionment needs
 - a) Cations- Sodium, Ammonium, Potassium
 - b) Anions- Chloride, Nitrate, Sulfate

3-Dimensional meteorological parameters (wind speed & wind direction in the x, y and z axes)

- Only at Sherman Elementary School (possibly San Ysidro) for at least one complete calendar year for CARB Source Apportionment needs)

Hexavalent Chromium

- Only at Sherman Elementary School

Otros Parámetros

Iones

- Solo en la escuela primaria Sherman durante al menos un año calendario completo para las necesidades de distribución de fuentes CARB
 - a) Cationes: sodio, amonio, potasio
 - b) Aniones: cloruro, nitrato, sulfato

Parámetros meteorológicos tridimensionales (velocidad y dirección del viento en los ejes x, y, z)

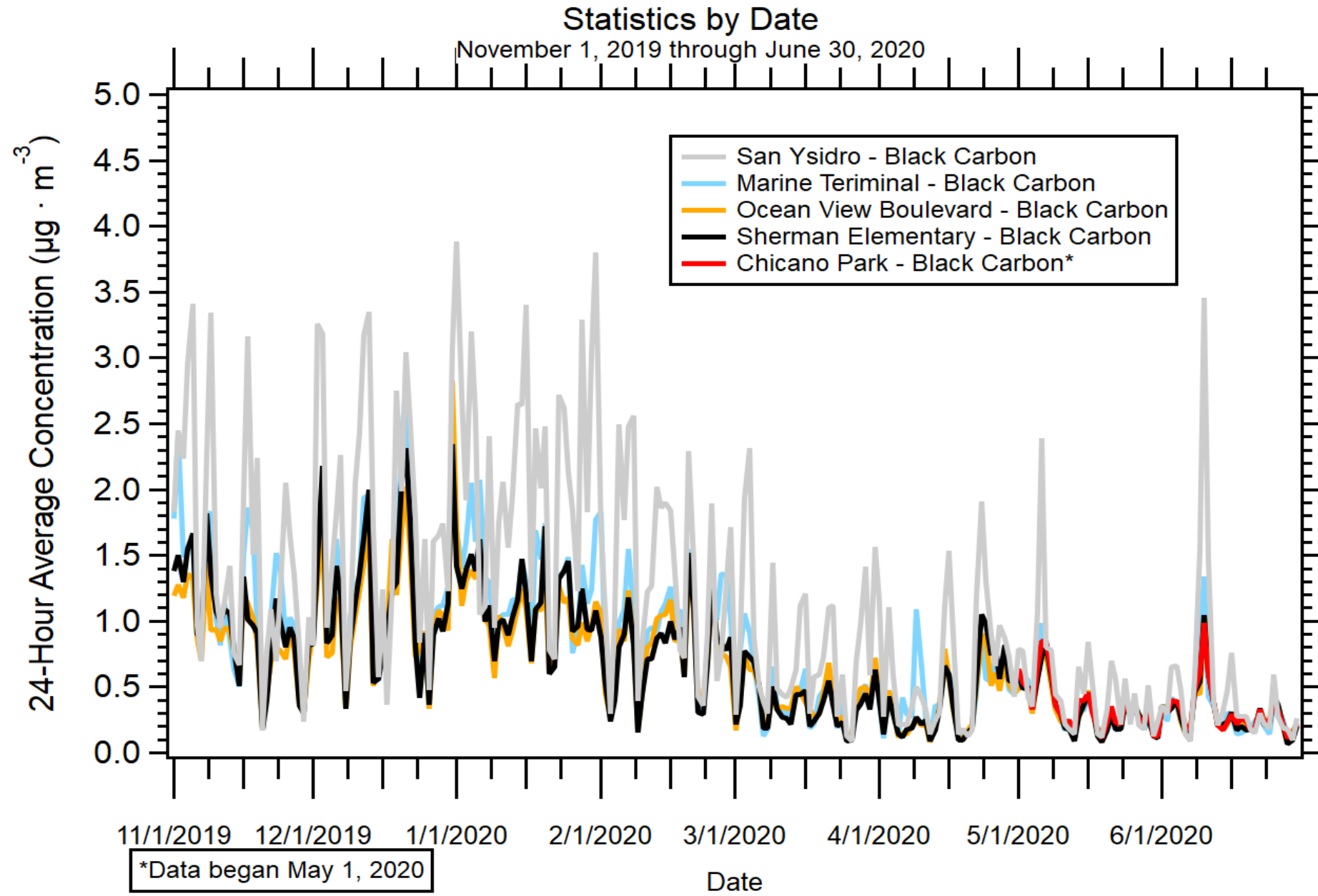
- Solo en la Escuela Primaria Sherman (posiblemente San Ysidro) durante al menos un año calendario completo para las necesidades de asignación de fuentes CARB)

Cromo Hexavalente

- Solo en la Escuela Primaria Sherman

Black Carbon (Nov – Jun, 24-hr avg)

Carbono Negro
(Nov – Jun, 24-hr pro medio)



Contact Information

Información de Contacto

- **Domingo Vigil, Deputy Director**
619-952-2916
Domingo.Vigil@sdcounty.ca.gov
- **Vacant, Chief of Monitoring & Technical Services**
- **David N. Shina, Senior Chemist of Special Projects**
858-586-2768
David.Shina@sdcounty.ca.gov
- **Andrew Langley, Supervisor of Technicians of Special Projects**
858-586-2619
Andrew.Langley@sdcounty.ca.gov