

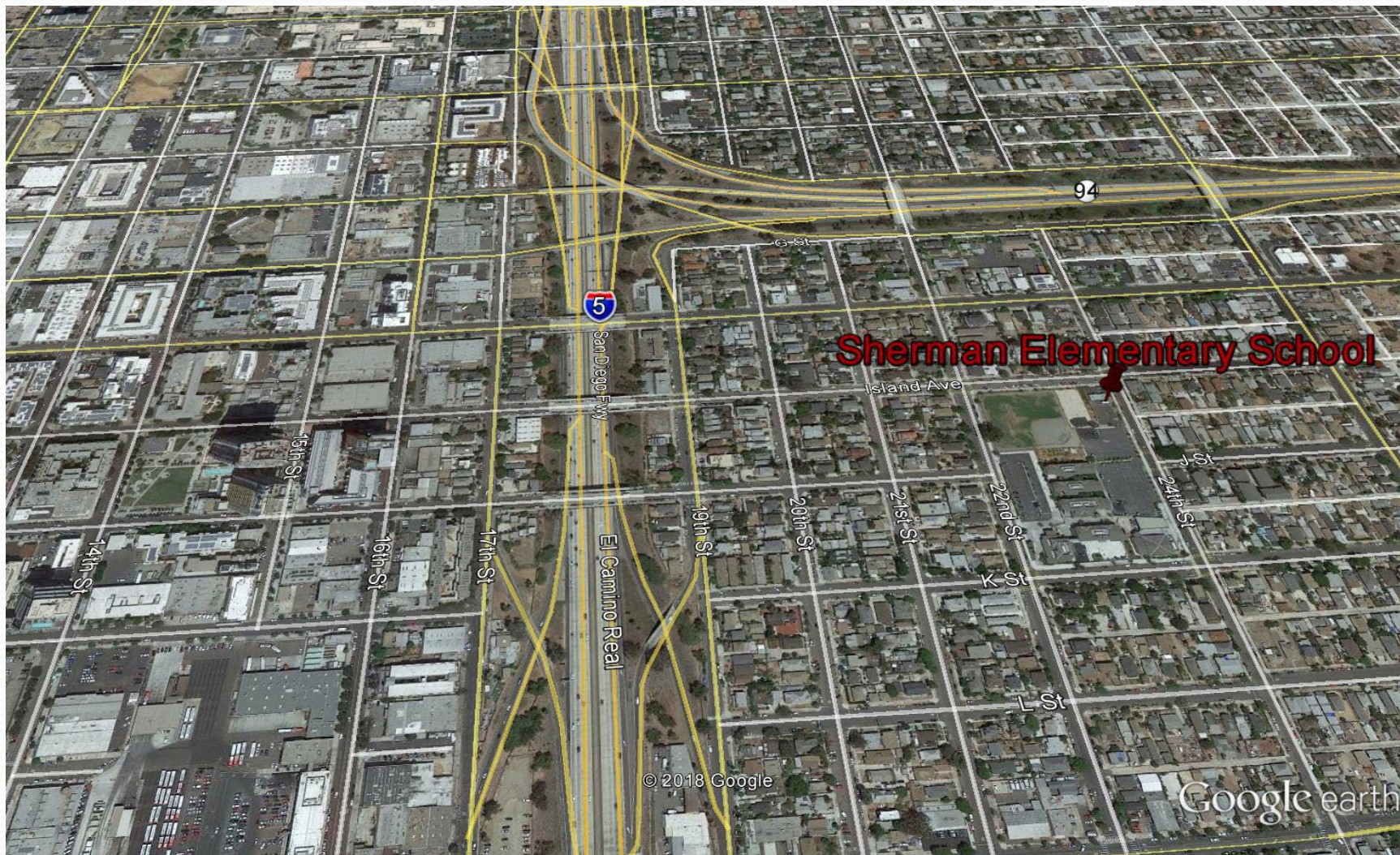
# Possible AB-617 Sites

1. Sherman Elementary School at Island Ave. & 24<sup>th</sup> St.
2. 10<sup>th</sup> Ave. Marine Terminal at Water St. & Terminal St.
3. Caltrans facility at Dewey St. & Newton Ave. (Chicano Park)
4. Caltrans property at 29<sup>th</sup> St. & Boston Ave.
5. Burbank Elementary School at Irving Ave. & S. Evans St.
6. Navy lot at W. 8<sup>th</sup> St. & E. Harbor Dr.
7. National City Train Depot at Harrison Ave. & Bay Marina Dr.
8. Kimball Elementary School at W. 18<sup>th</sup> St. & Harding Ave.

# EQUIPMENT AT THE SITES

- Met One Meteorological sensors will be placed at several sites
  - Sherman Elementary School, 10<sup>th</sup> Ave., and other sites TBD
- Equipment to be installed include:
  - Met One SuperSASS sampler for Elemental Carbon and Ions
    - Samples to be collected every 3 days
  - Met One BC-1060 analyzer for Black Carbon
    - Real-time analyzer
  - Met One E-Sequential sampler for Metals
    - Samples to be collected every 6 days
  - Xonteck 911 sampler for Volatile Organic Compounds
    - Samples to be collected every 6 days

# Site 1: Sherman Elementary School



# Site 1: Sherman Elementary (status)

- MOU- signed
- Infrastructure
  - Fencing, housing, electrical- completed
  - Decking- in process
- Equipment-
  - SuperSASS (for EC)- at site; we are collecting filters
  - BC-1060 (for BC)- at District
  - E-sequential (for Metals)- at District
  - 911 sampler- on order
  - Meteorological sensors- to be ordered
  - Communication devices- to be ordered
  - PM<sub>2.5</sub>- at site; real-time analysis

# Site 1: Sherman Elementary School

- Sherman is also an Ambient air monitoring station. The following equipment will be collocated there for the Ambient Network:
  - Ozone analyzer (real-time)
  - Nitrogen dioxide (real-time)
  - PM<sub>2.5</sub> sampler (real-time)
  - PM<sub>2.5</sub> analyzer (every 3 days sampling)
  - Volatile Organic Compounds (every 6 days sampling; overlaps with AB617 for QA purposes)
  - Metals (every 6 days sampling; overlaps with AB617 for QA purposes)

# Site 2: 10<sup>th</sup> Ave. Terminal



# Site 2: 10<sup>th</sup> Ave. Terminal

- MOU- lawyer review
- Infrastructure
  - Fencing- part of the MOU
  - Electrical- part of the MOU
- Equipment-
  - SuperSASS (for EC)- at District
  - BC-1060 (for BC)- at District
  - E-sequential (for Metals)- at District
  - 911 sampler- on order
  - Meteorological sensors- to be ordered
  - Communication devices- to be ordered

# Site 3: Caltrans-Chicano Park





# Site 3: Caltrans-Chicano Park

- MOU- being written jointly with Caltrans
- Infrastructure
  - Fencing- cannot be undertaken until the MOU is signed
  - Electrical- filling out the SDG&E paperwork
- Equipment-
  - SuperSASS (for EC)- at District
  - BC-1060 (for BC)- at District
  - E-sequential (for Metals)- at District
  - 911 sampler- on order
  - Meteorological sensors- TBD (to be ordered)
  - Communication devices- to be ordered

# Site 4: Caltrans-29<sup>th</sup> St. (birds-eye view)



# Site 4: Caltrans-29<sup>th</sup> St.

- MOU- being written jointly with Caltrans
- Infrastructure
  - Fencing- cannot be undertaken until the MOU is signed
  - Electrical- filling out the SDG&E paperwork
- Equipment-
  - SuperSASS (for EC)- to be ordered
  - BC-1060 (for BC)- to be ordered
  - E-sequential (for Metals)- to be ordered
  - 911 sampler- on order
  - Meteorological sensors- TBD (to be ordered)
  - Communication devices- to be ordered

# Site 5: Burbank Elementary School



# Site 5: Burbank

- MOU- We will need to work with the City also, since the prospective site is on both School and City property.
- Infrastructure
  - Fencing- cannot be undertaken until the MOU is signed
  - Electrical- filling out the SDG&E paperwork
- Equipment-
  - SuperSASS (for EC)- to be ordered
  - BC-1060 (for BC)- to be ordered
  - E-sequential (for Metals)- to be ordered
  - 911 sampler- on order
  - Meteorological sensors- TBD (to be ordered)
  - Communication devices- to be ordered

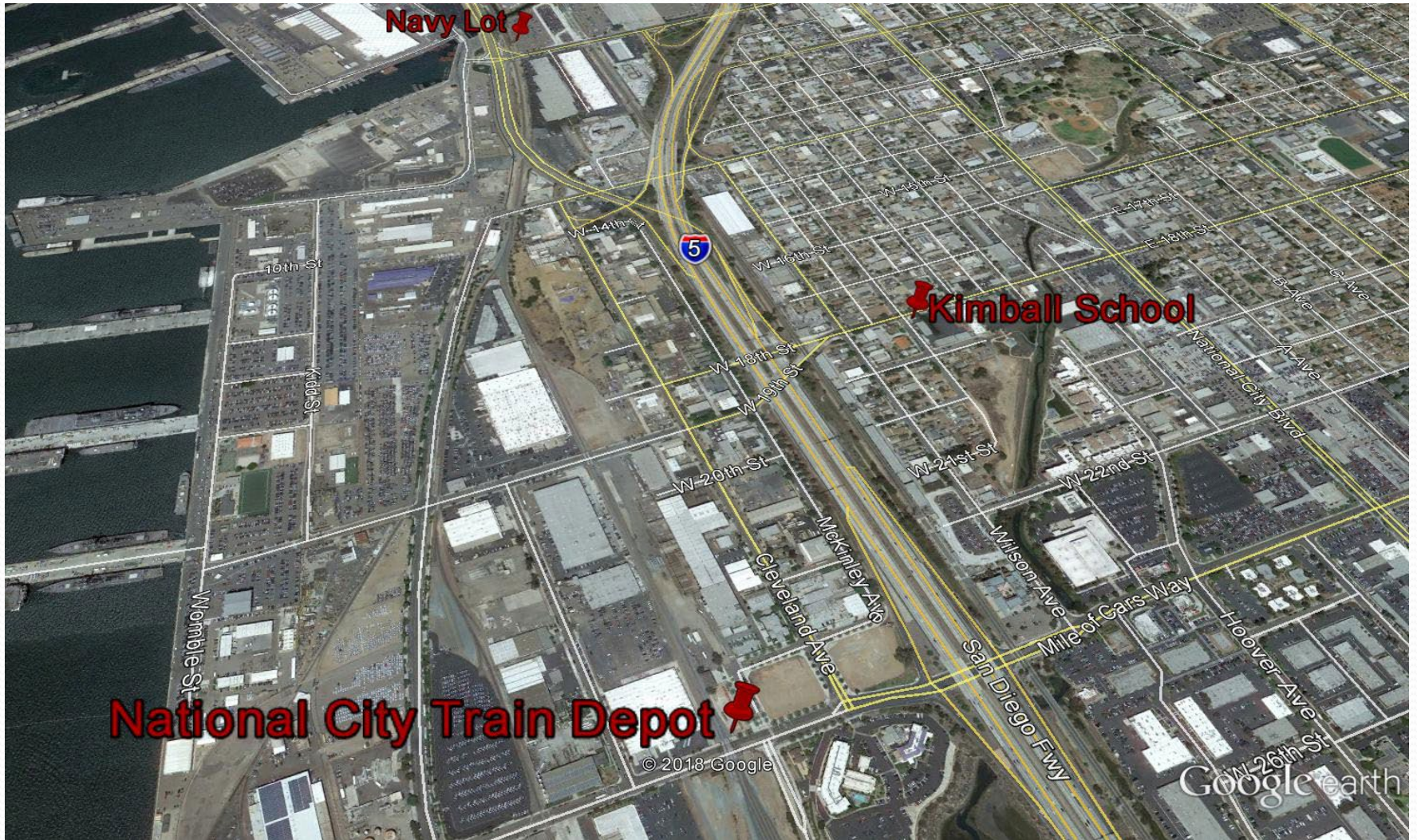
# Site 6: Navy Lot



# Site 6: Navy Lot

- MOU- being written
- Infrastructure
  - Fencing- cannot be undertaken until the MOU is signed
  - Electrical- filling out the SDG&E paperwork
- Equipment-
  - SuperSASS (for EC)- to be ordered
  - BC-1060 (for BC)- to be ordered
  - E-sequential (for Metals)- to be ordered
  - 911 sampler- on order
  - Meteorological sensors- TBD (to be ordered)
  - Communication devices- to be ordered

# Site 7: Train Depot

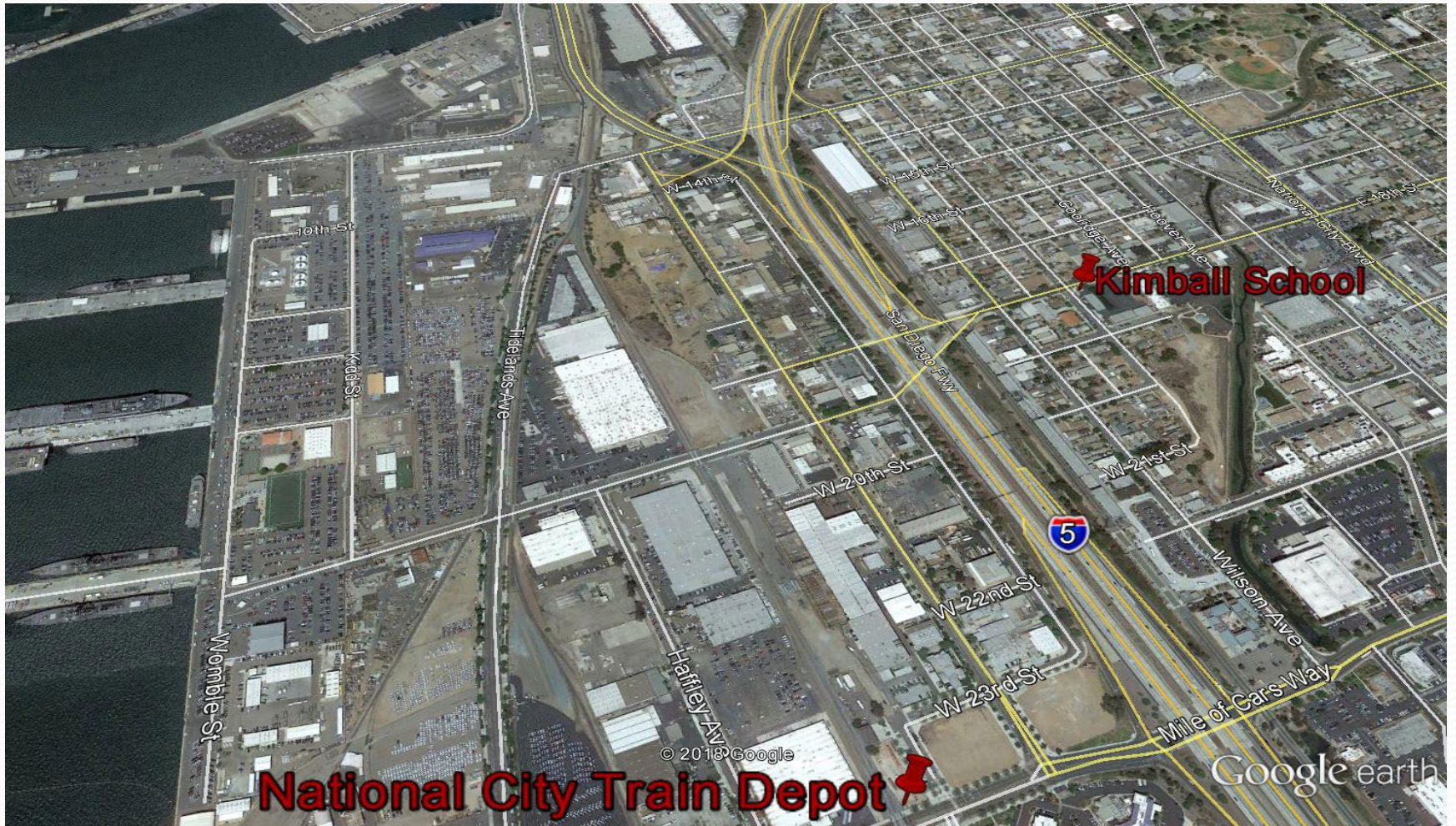




# Site 7: Train Depot

- MOU- signed
- Infrastructure
  - Fencing- waiting until the power is delivered.
  - Electrical- filling out the SDG&E paperwork
- Equipment-
  - SuperSASS (for EC)- at District
  - BC-1060 (for BC)- at District
  - E-sequential (for Metals)- at District
  - 911 sampler- on order
  - Meteorological sensors- to be ordered
  - Communication devices- to be ordered

# Site 8: Kimball Elementary School



# Site 8: Kimball Elementary School

- MOU- We are meeting with the Superintendent on Friday
- Infrastructure
  - Fencing- waiting on the results of the meeting
  - Electrical- waiting on the results of the meeting
- Equipment-
  - SuperSASS (for EC)- to be ordered
  - BC-1060 (for BC)- to be ordered
  - E-sequential (for Metals)- to be ordered
  - 911 sampler- on order
  - Meteorological sensors- TBD (to be ordered)
  - Communication devices- to be ordered

# Overall Map





# QUESTIONS