



California Air Toxics Assessment (CATA)

Modeling and Meteorology Branch / AQPSD/CARB

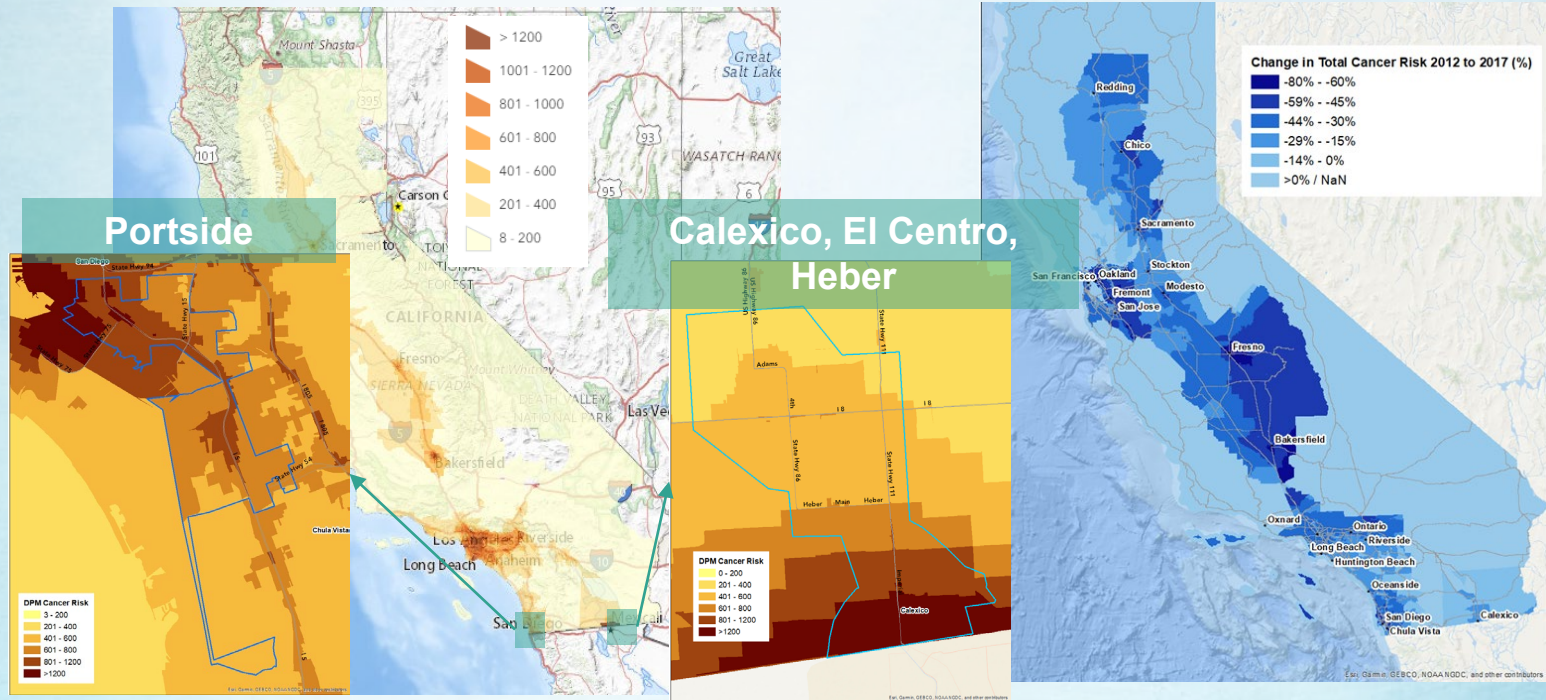
California Air Toxics Assessment (CATA)

- **What is CATA?**
 - Assess the statewide health risks associated with major toxic air pollutants (diesel particulates, heavy metals, toxic VOCs)
 - Bridges the gap between national and regional assessments
- **Why CATA?**
 - Support CARB's Air Toxics Program (AB1807, AB2588, AB617) and Environmental Justice efforts
 - Support **CalEnviroScreen** and complement to the existing monitoring network
 - Track health risk trends over time
- **Cautionary use:**
 - View the data in relative terms, such as risk percentiles, rather than absolute values.
 - CATA results should not serve as the sole basis for making decisions related to air quality, health risks, or legal matters.

CATA Results Displayed on Various Spatial Scales

Total Cancer Risk for 2017 (per million)

Total Risk change from 2012 to 2017 in %



CATA Data Portal

- CATA Data Portal offers universal access to data through user-friendly mapping tools and visualization of CATA's key findings.
- Visit: <https://california-air-toxics-assessment-californiaarb.hub.arcgis.com/>
- Contact us at: cata@arb.ca.gov

