

**CALIFORNIA AIR TOXICS  
"HOT SPOTS"  
INFORMATION AND ASSESSMENT  
ACT (AB 2588)**

**2009 Air Toxics "Hot Spots"  
Program Report  
for  
San Diego County**

**December 8, 2010**

**SAN DIEGO COUNTY  
AIR POLLUTION CONTROL DISTRICT  
10124 Old Grove Road  
San Diego, CA 92131**

# 2009 Air Toxics "Hot Spots" Program Report for San Diego County

## TABLE OF CONTENTS

	<u>PAGE</u>
<b>INTRODUCTION</b> .....	1
<b>BACKGROUND</b> .....	1
<b>PROGRAM DESCRIPTION AND STATUS</b> .....	3
Table 1 – Estimated Toxic Air Contaminant Emissions – All Sources .....	3
Table 2 – Air Resources Board Estimated Toxic Air Contaminant Emissions - Non-Industrial Sources .....	6
Facility Prioritization .....	7
Table 3 – Prioritization Categories .....	8
Health Risk Assessments .....	8
Table 4 – Health Risk Assessment Results .....	9
Public Notification and Risk Reduction.....	11
Table 5 - Public Notification and Risk Mitigation Levels .....	11
Table 6 – Facilities Conducting Biennial Public Notification .....	12
Table 7 – Facilities Implementing a Risk Reduction Plan.....	13
Recent and Expected Changes to the Program .....	13
<b>QUALITY OF THE EMISSIONS INVENTORY DATA</b> .....	14
<b>AIR TOXIC CONTROL MEASURES</b> .....	14
Table 8 – Recent and Proposed Airborne Toxic Control Measures and National Emissions Standards for Hazardous Air Pollutants Applicable in San Diego County.....	15
<b>TOXIC AIR CONTAMINANTS AMBIENT MONITORING</b> .....	17
Figure 1 - Toxic Air Contaminant Incremental Cancer Risk.....	18
<b>CONCLUSIONS</b> .....	19

## INTRODUCTION

The California Air Toxics "Hot Spots" Information and Assessment Act (AB 2588) was enacted by the Legislature in 1987 to address public concern over the release of toxic air contaminants into the atmosphere. The law requires facilities emitting toxic substances to provide local air pollution control districts with information to identify sources of toxic air contaminants, assess air toxic problems, locate resulting "hot spots," notify persons that may be exposed to significant risks, and develop effective strategies to reduce potential risks to the public.

A requirement of the Air Toxics "Hot Spots" Information and Assessment Act (Section 44363 of the California Health and Safety Code) is for local air pollution control districts to provide the public with an annual progress report on the program. This report fulfills that requirement by providing information about emission inventories, approved health risk assessments (HRA), public notification procedures, and steps undertaken to reduce public health risks. State and local health officials may use the report to establish priorities for developing and implementing air toxic control measures to protect public health.

This report summarizes the AB 2588 program elements, the current status of the program in San Diego County, stationary and mobile emissions estimates, results of local HRAs, current status of public notifications, and conclusions drawn from the program to date. Stationary source emission estimates, by facility, are also available on the San Diego County Air Pollution Control District's (District) website (<http://www.sdapcd.org>) by selecting the Emissions Inventory & Toxics button and then selecting Facility Emissions for San Diego County 1997 - 2008. In addition, stationary source emissions inventories are available upon request for those without internet access.

Although toxic air contaminant emissions from stationary sources in San Diego County have been reduced by approximately 85% since 1989, large amounts of toxic compounds are still emitted into the air from a wide variety of sources including motor vehicles, industrial facilities, household products, area sources, and natural processes. Prioritizing and reducing these emissions further will require a continued, cooperative effort by the public, industry, environmental groups, California Air Resources Board (CARB), and the District.

## BACKGROUND

The District is the implementing agency for approximately 1,500 San Diego facilities required to comply with the Air Toxics "Hot Spots" Act. The law requires facilities to submit information that is used to achieve the objectives of the program. For larger industrial facilities, this information includes:

- **Emission Inventory Reports** - Facilities must submit the information needed by the District to prepare a toxic emissions inventory report. The District then prioritizes each facility to determine if a HRA is necessary based upon the amount and toxicity of the reported emissions.
- **Health Risk Assessments** - Facilities required to submit HRAs must determine the level of public exposure to emitted compounds and potential adverse public health impacts. The

State Office of Environmental Health Hazard Assessment (OEHHA) assists the District in reviewing each HRA.

- **Public Notification** - If an adverse health impact exceeding public notification levels (specified in District Rule 1210) is identified, the facility must provide notice to all exposed persons regarding the results of the HRA.
- **Risk Reduction Audits and Plans** - Facilities with emissions that pose a potentially significant public health risk must submit a risk reduction audit and plan to the District. This plan must demonstrate how the facility will reduce health risks below significant levels. The facility must implement the plan as approved by the District.

The Air Toxics "Hot Spots" program has been implemented in phases. Facilities are required to update their toxic inventories at least every four years depending on program status for each facility. The District has developed toxic emission inventory reporting procedures that streamline this process while meeting the requirements of the CARB Emissions Inventory Criteria and Guidelines regulation. For example, facilities are no longer required to perform emission calculations. Instead, the District provides customized inventory forms based upon site-specific equipment information and calculates facility emissions based on process information supplied by the facility operator. Additionally, the District has merged the Toxic Emission Reports with the Criteria Pollutant Emission Reports to eliminate duplicate data requests.

The District has also designed the local program to allow many small businesses to meet inventory requirements more cost-effectively by completing industry-specific reporting forms. The District has standardized and automated many computational and record keeping tasks. In collaboration with the CARB, OEHHA, and other air agencies, generic HRAs have been developed for gas stations, dry cleaners, and auto body shops to assess industry-wide impacts. These program enhancements save businesses time and money.

The District is required to review and approve the data submitted by facilities, compile an inventory of emissions, and publish an annual program report on the region's toxic air contaminant emissions, risk assessment results, and control measures effectiveness. These reports are used by health officials to develop strategies for protecting the public health.

Toxic air contaminant emissions should not necessarily be equated with a significant health risk (cancer or non-cancer) to any individual or the public. The quantity and toxicity of the compounds being emitted and the level of public exposure must be known before drawing conclusions about health risks. This report presents data on emissions from several hundred facilities. In some cases, data on public exposure is still being developed, updated, or reviewed. HRAs have been completed for 84 facilities.

However, exposure to the toxic compounds in question, in sufficient quantities, can cause health problems ranging from relatively mild temporary conditions such as minor eye or throat irritation, shortness of breath, or headaches; to permanent and serious conditions such as cancer, birth defects, or damage to lungs, nerves, the liver, the heart, or other organs.

The District has evaluated at least five toxic emission inventories for most facilities in San Diego County. An estimate of current toxic air contaminant emissions (for calendar years 2005-2008) from all sources, industrial and non-industrial, is presented in Table 1 of this report. Detailed site-specific emission results are provided on the District's website.

## PROGRAM DESCRIPTION AND STATUS

The industrial source emission estimates provided in Table 1 are for approximately 3,130 facilities including 1,750 diesel engine facilities, 368 auto body shops, 683 gasoline stations, and 117 dry cleaners. Detailed emission inventories for individual facilities are available on the District's website. Estimates of mobile, area, and natural source emissions prepared by the CARB are also presented in Table 1. Mobile, area, and natural source estimates come from several CARB emission reports. When multiple emission estimates were available, the most recent data was used for a category of source.

**Table 1: Estimated Toxic Air Contaminant Emissions - All Sources**

Toxic Air Contaminant	Most Recent Emissions from Industrial Sources Estimated for 2005-2008 (lbs/yr)	Most Recent Total Mobile, Area, Natural Emissions from ARB (lbs/yr) <sup>(1)</sup>	Total San Diego County Emissions (lbs/yr)
Ammonia	16,706	13,704,290	13,720,996
Aluminum <sup>(2)</sup>	19,515	12,121,035	12,140,550
Methanol	12,034	5,312,470	5,324,504
Toluene	190,740	4,261,240	4,451,980
Diesel Particulate <sup>(2,3)</sup>	35,256	3,536,120	3,571,376
Xylenes	240,270	3,075,785	3,316,055
Propylene	689	2,783,486	2,784,175
Formaldehyde	70,166	2,518,641	2,588,806
Trimethylpentane, 2,2,4-	12,982	2,134,035	2,147,017
Acetaldehyde	9,825	1,881,102	1,890,927
Isopropyl Alcohol	237,499	1,437,539	1,675,037
Benzene	13,875	1,465,565	1,479,440
Hexane	114,955	1,112,147	1,227,102
Ethyl Benzene	46,790	805,127	851,917
Trimethylbenzene, 1,2,4-	43,060	717,938	760,998
Methylene Chloride	35,907	602,661	638,567
Perchloroethylene	203,250	354,201	557,451
Ethylene Glycol	5,302	510,224	515,526
PAH, Unspecified <sup>(2)</sup>	669	499,564	500,233
Ethylene Glycol Butyl Ether	17,910	457,985	475,894
Butadiene, 1,3-	1,371	464,800	466,170
Chlorine	366	458,437	458,804
Methyl Ethyl Ketone	103,496	337,063	440,559
Cyclohexane	no available data	370,857	370,857
Phosphorous <sup>(2)</sup>	25	258,007	258,032
Acrolein	1,256	249,368	250,624
Dichlorobenzene	331	244,012	244,343
Naphthalene <sup>(2)</sup>	1,810	238,432	240,242

Table 1: Estimated Toxic Air Contaminant Emissions - All Sources -- Continued

<b>Toxic Air Contaminant</b>	<b>Most Recent Emissions from Industrial Sources Estimated for 2005-2008 (lbs/yr)</b>	<b>Most Recent Total Mobile, Area, Natural Emissions from ARB (lbs/yr) (1)</b>	<b>Total San Diego County Emissions (lbs/yr)</b>
Barium <sup>(2)</sup>	7,591	168,806	176,397
Trichloroethane, 1,1,1-	830	150,398	151,228
Butanol	124,211	25,716	149,927
Zinc <sup>(2)</sup>	4,143	125,538	129,681
Manganese <sup>(2)</sup>	2,125	116,099	118,223
Methyl Isobutyl Ketone	66,764	39,548	106,313
Styrene	17,310	79,133	96,443
Propylene Glycol Methyl Ether	22,175	35,187	57,362
Trichloroethylene	6,982	44,218	51,200
Lead <sup>(2)</sup>	134	41,803	41,937
Copper <sup>(2)</sup>	6,168	29,566	35,735
Phenol	3,749	15,183	18,932
Chromium, Non-Hexavalent <sup>(2)</sup>	176	13,179	13,355
Arsenic <sup>(2)</sup>	53	8,909	8,962
Cobalt <sup>(2)</sup>	9	7,447	7,456
Nickel <sup>(2)</sup>	369	6,627	6,996
Chromium, Hexavalent <sup>(2)</sup>	19	6,756	6,775
Ethylene Oxide	1	3,766	3,767
Methyl Methacrylate	2,777	705	3,483
Cadmium <sup>(2)</sup>	34	2,297	2,330
Ethylene Glycol Ethyl Ether Acetate	700	1,496	2,196
Mercury <sup>(2)</sup>	54	1,636	1,690
Thallium <sup>(2)</sup>	75	1,360	1,435
Ethylene Glycol Ethyl Ether	173	1,027	1,200
Vinyl Acetate	44	1,127	1,171
Dibutyl Phthalate	337	827	1,164
Selenium <sup>(2)</sup>	23	1,003	1,026
Chlorobenzene	240	745	985
Methylene Diphenyl Isocyanate	135	562	697
Methyl Tert Butyl Ether	96	575	671
Silver <sup>(2)</sup>	50	544	595
Ethylene Glycol Methyl Ether	158	53	211
Propylene Oxide	0	11	11
Silica, Crystalline <sup>(2)</sup>	181,910	no data available	Unknown
Glycol Ethers	55,642	no data available	Unknown
Hydrogen Chloride	36,771	no data available	Unknown
Hydrogen Sulfide	14,145	no data available	Unknown
M-Pyrol	6,059	no data available	Unknown
Sodium Hydroxide	3,465	no data available	Unknown
Propylene Glycol	3,081	no data available	Unknown
Ethylene Dichloride	2,225	no data available	Unknown
Vinyl Chloride	1,811	no data available	Unknown
Dioxane,1,4-	1,777	no data available	Unknown
Chlorofluorocarbons	1,674	no data available	Unknown

Table 1: Estimated Toxic Air Contaminant Emissions - All Sources -- Continued

Toxic Air Contaminant	Most Recent Emissions from Industrial Sources Estimated for 2005-2008 (lbs/yr)	Most Recent Total Mobile, Area, Natural Emissions from ARB (lbs/yr) (1)	Total San Diego County Emissions (lbs/yr)
Isocyanates, Unspecified	1,644	no data available	Unknown
Hydrogen Fluoride	1,504	no data available	Unknown
Nitric Acid	967	no data available	Unknown
Chloroform	963	no data available	Unknown
Carbon Disulfide	768	no data available	Unknown
Quinone	403	no data available	Unknown
Ethylene Glycol Methyl Ether Acetate	310	no data available	Unknown
Carbonyl Sulfide	249	no data available	Unknown
Acrylonitrile	249	no data available	Unknown
Carbon Tetrachloride	173	no data available	Unknown
Vinylidene Chloride	161	no data available	Unknown
Sulfuric Acid	49	no data available	Unknown
Benzyl Chloride	15	no data available	Unknown
Beryllium <sup>(2)</sup>	2	no data available	Unknown
<b>Total</b>	<b>2,019,775</b>	<b>62, 843,978</b>	<b>64,863,753 <sup>(4)</sup></b>

1. Emission data obtained from CARB's 2006 California Toxics Inventory.
2. This toxic air contaminant is emitted as a particulate.
3. The estimate of diesel particulate matter emissions are from stationary diesel internal combustion engines only. Individual toxins of diesel particulate matter (i.e., arsenic, cadmium, copper, hexavalent chromium, lead, nickel, selenium, and zinc) from sources other than stationary diesel internal combustion engines are reported separately in above table.
4. Total of most recent available estimates for industrial, mobile, area, and natural sources.

Overall, local emissions of toxic air contaminants from industrial sources have decreased by approximately 85% since 1989. The most significant reductions include a variety of solvents and heavy metals. Emission increases are primarily the result of increased usage of reformulated paints, solvents, and gasoline. Emission estimates for some compounds have increased, although the actual emission levels may not have changed. This is due to changes in combustion-related emission factors and newly listed toxic air contaminants not included in initial inventories.

County-wide emissions for non-industrial sources (mobile, area, and natural sources) are presented in Table 1. Emissions for the mobile, area, and natural source subcategories are presented in Table 2. Mobile sources include on-road vehicles, off-road vehicles, trains, mobile equipment, and utility equipment. Area sources include residential and commercial non-point sources such as fuel combustion, entrained road dust, waste burning, solvent use, pesticide application, and construction and demolition. Natural sources include wildfires and windblown dust from agricultural operations and unpaved areas.

Emissions of toxic air contaminants were obtained from CARB's 2008 California Toxics Inventory for non-industrial sources (released in December 2008) which may be found at <http://www.arb.ca.gov/toxics/cti/cti.htm>.

**Table 2: CARB Estimated Toxic Air Contaminant Emissions –  
Non-Industrial Sources**

<b>Toxic Air Contaminant</b>	<b>Mobile Source (lbs/yr)</b>	<b>Area Source (lbs/yr)</b>	<b>Natural Source (lbs/yr)</b>	<b>Total Mobile, Area, Natural from ARB (lbs/yr)</b>
Ammonia	3,872,504	7,802,824	2,028,962	13,704,290
Aluminum	1,697	12,114,847	4,491	12,121,035
Methanol	104,969	488,729	4,718,772	5,312,470
Toluene	3,429,983	831,257		4,261,240
Diesel Particulate Matter	3,536,120			3,536,120
Xylenes	3,039,683	36,102		3,075,785
Propylene	1,879,831	52,499	851,157	2,783,486
Formaldehyde	2,406,814	111,826		2,518,641
Trimethylpentane, 2,2,4-	2,045,047	88,988		2,134,035
Acetaldehyde	969,207	89,599	822,296	1,881,102
Benzene	1,458,295	7,269		1,465,565
Isopropyl Alcohol		1,437,539		1,437,539
Hexane	836,500	275,647		1,112,147
Ethyl Benzene	759,473	45,654		805,127
Trimethylbenzene, 1,2,4-	675,942	41,996		717,938
Methylene Chloride		602,661		602,661
Ethylene Glycol		510,224		510,224
PAHs, Unspecified	384,477	111,909	3,178	499,564
Butadiene, 1,3-	334,291	26,663	103,846	464,800
Chlorine	160,981	258,436	39,020	458,437
Ethylene Glycol Butyl Ether		457,985		457,985
Cyclohexane	347,193	23,664		370,857
Perchloroethylene		354,201		354,201
Methyl Ethyl Ketone	137,455	199,608		337,063
Phosphorus	1,161	254,738	2,108	258,007
Acrolein	158,063	19,635	71,670	249,368
Dichlorobenzene		244,012		244,012
Naphthalene	151,170	87,262		238,432
Barium	51,498	117,308		168,806
Trichloroethane, 1,1,1-		150,398		150,398
Zinc	12,816	92,449	20,272	125,538
Manganese	2,787	112,591	720	116,099
Styrene	74,131	5,002		79,133
Trichloroethylene		44,218		44,218
Lead	7,186	34,151	466	41,803
Methyl Isobutyl Ketone		39,548		39,548
Propylene Glycol Methyl Ether		35,187		35,187
Copper	11,965	17,400	201	29,566
Butanol		25,716		25,716
Phenol	6,537	8,646		15,183
Chromium, Non-Hexavalent	2,246	10,934		13,179
Arsenic	6,714	1,951	244	8,909
Cobalt	1,120	6,327		7,447
Chromium, Hexavalent	6,754	2		6,756
Nickel	2,416	4,210		6,627

Table 2: CARB Estimated Toxic Air Contaminant Emissions – Non-Industrial Sources—Continued

Toxic Air Contaminant	Mobile Source (lbs/yr)	Area Source (lbs/yr)	Natural Source (lbs/yr)	Total Mobile, Area, Natural from ARB (lbs/yr)
Ethylene Oxide		3,766		3,766
Cadmium	852	1,444		2,297
Mercury	86	1,550		1,636
Ethylene Glycol Ethyl Ether Acetate		1,496		1,496
Thallium		1,339	21	1,360
Vinyl Acetate		1,127		1,127
Ethylene Glycol Ethyl Ether		1,027		1,027
Selenium	678	293	32	1,003
Dibutyl Phthalate		827		827
Chlorobenzene	56	688		745
Methyl Methacrylate		705		705
Methyl Tert-Butyl Ether	575			575
Methylene Diphenyl Isocyanate		562		562
Silver	50	389	106	544
Ethylene Glycol Methyl Ether		53		53
Propylene Oxide		11		11
<b>TOTALS</b>	<b>26,879,326</b>	<b>27,297,092</b>	<b>8,667,560</b>	<b>62,843,978</b>

### **Facility Prioritization**

The purpose of facility prioritization is to identify facilities that emit toxic air contaminants in amounts that warrant a detailed evaluation of potential public health risks through preparation of a site-specific HRA. Prioritization procedures consider the magnitude of toxic air contaminant emissions from facilities and the toxicity of those emissions, but do not consider the dilution characteristics of a specific facility's exhaust stacks or the expected health risks posed by the emissions. Requiring a facility to prepare a risk assessment does not mean the facility poses a significant risk to public health.

Facilities are placed into three categories: Category A for facilities that are required to prepare and submit a HRA; Category B for facilities that may be required to conduct a HRA at a future date; and Category C for facilities that are not required to conduct a HRA. Ranges of prioritization scores for each category are shown in Table 3.

**Table 3: Prioritization Categories**

	Prioritization Category		
	A	B	C
Facility Score for carcinogenic compounds	Score $\geq$ 100	1 $\leq$ Score < 100	Score < 1
Facility Score for Non-carcinogenic compounds	Score $\geq$ 10	1 $\leq$ Score < 10	Score < 1

Facilities are reprioritized based on their most recently approved toxic emissions inventory report. Prioritization procedures can be found on the District's website at <http://www.sdapcd.org/toxics/prioritize.pdf>.

### **Health Risk Assessments**

A HRA is a study of the possible public health risks that may be posed by emissions of toxic compounds. Each facility that has been placed in Category A must prepare and submit a HRA to the District.

The assessment incorporates conservative pollutant dispersion estimates, human exposure assumptions, and health effects information to ensure that the final risk assessments are not underestimated. Accordingly, the results of a risk assessment may overstate actual health risks but are useful in comparing the relative risks of sources and pollutants and setting priorities for mitigation. For example, a risk assessment typically will estimate the increased cancer risk for a hypothetical individual who would remain at the one location with the greatest potential for exposure to toxic air contaminant emissions from the facility for 24 hours a day, 365 days per year, over 70 years.

While the HRA procedures are generally considered to be conservative, some factors that may tend to underestimate impacts are difficult to evaluate. For example, a HRA is based on emission estimates for the indicated inventory year. These emissions are assumed to occur for 70 years to obtain a "lifetime" cancer risk. Years other than the inventory year, in particular for years before this program, may have higher (or lower) emissions. Additionally, the cumulative effect of emissions from other nearby mobile, area, and stationary sources and the potential for complex mixtures of toxic air contaminants to create an additional health problem by their combined reaction to each other cannot be estimated. Also, some facility emission estimates are based on average factors for individual types of equipment and actual emissions may be higher or lower. Finally, the HRA results only include potential impacts from compounds with OEHHA-approved health values. Compounds without OEHHA-approved health values are not included.

CARB lists more than 700 compounds to be assessed under the Air Toxics "Hot Spots" program. The list includes potentially carcinogenic substances as well as compounds that may cause health problems such as respiratory irritation or central nervous system depression. The toxicity varies from compounds that pose concern if more than a few grams are emitted per day, to those that may pose no significant health risks if many pounds are emitted per day. OEHHA reviews and updates the toxicity of the listed compounds. This updated information is then distributed to all

groups involved in the program for use in identifying facilities required to prepare risk assessments and in preparing the assessments.

Each HRA is reviewed by the District and OEHHA to identify deficiencies requiring correction. The District then approves, modifies, or returns the HRA for corrections. The results of all risk assessments prepared under this program are available for public review. A summary of the results of the HRA prepared under this program is presented in Table 4.

**Table 4: Health Risk Assessment Results**

HRA Evaluation Period	Facility	Max. Lifetime Cancer Risk per million (2)	Lifetime Cancer Burden (3)	Chronic THI (4)	Acute THI (5)	
1989	General Dynamics / Pacific Hwy (7)	San Diego	1,000	37	3.8	1.0
1995	Palomar Plating (7, 8)	Escondido	364	< 0.1	1.2	N/a
1995	Campbell Marine (7)	San Diego	154	< 0.1	0.83	17
2002	Southern California Plating (8)	San Diego	123	0.04	< 0.1	0.2
1994	Hues Metal Finishing (8)	San Marcos	85	< 0.1	0.66	12
2005	Vision Systems	El Cajon	66.3	< 1.0	0.25	5.81
2005	National Steel & Shipbuilding	San Diego	45.6	0.99	0.96	0.88
1989	Otay Landfill (6, 10)	San Diego	42	0.16	< 0.1	< 0.1
1995	Escon Tool and Manufacturing (7, 8)	San Marcos	41	0.25	0.80	3.1
2003	Pacific Ship Repair	San Diego	41	< 1	0.24	< 0.1
1995	Flame Spray Inc. (8)	San Diego	40	< 0.1	0.14	30
2005	S.D. City Pump Station 2	San Diego	33	< 1.0	0.3	0.1
1989	Powerine Oil Co. (7)	San Diego	32	< 0.1	0.10	0
1993	USN Point Loma Naval Complex (1, 12)	San Diego	28	< 0.1	0.18	0.47
1993	National Steel & Shipbuilding (1, 12)	San Diego	27	< 0.1	0.3	3.5
1993	Chem-tronics, Inc. (1, 8)	El Cajon	26	0.12	0.36	20
2003	Kyocera America	San Diego	26	< 0.1	1.04	1.81
1993	USMC Miramar / USN Miramar (1, 12)	San Diego	24	0.2	0.13	0.81
1989	Sycamore Landfill (6, 10)	San Diego	19	< 0.1	< 0.1	< 0.1
1993/1998	USN Air Station/North Island (1, 8, 9, 12)	Coronado	15	< 0.1	0.20	0.8
1993	USN Navy Station, 32 <sup>nd</sup> St. (1, 12)	San Diego	15	0.2	0.11	3
2005	USN Air Station/North Island	Coronado	13.5	0.19	< 0.1	0.72
2004	City of Oceanside - Water Utilities (6)	Oceanside	8.9	< 0.1	< 0.1	0.69
2004	Southwest Airlines (6)	San Diego	8.8	< 0.1	< 0.1	0.17
2005	S.D. City Miramar Landfill	San Diego	8.5	0.19	2.06	0.37
1993	Santa Fe Pacific Pipeline (1)	San Diego	8	< 0.1	< 0.1	< 0.1
1994	Continental Maritime	San Diego	7.7	< 0.1	< 0.1	0.44
1993	BF Goodrich / Rohr Industries (1)	Chula Vista	7.7	< 0.1	< 0.1	< 0.1
1993	Southwest Marine (1)	San Diego	7.7	< 0.1	< 0.1	2.1
2003	Palomar Medical Center (6)	Escondido	7.6	< 0.1	0.28	< 0.1
1989	San Marcos Landfill (10)	San Marcos	7.4	< 0.1	< 0.1	< 0.1
1993	Solar Turbines / Ruffin Rd (1)	San Diego	7.3	< 0.1	< 0.1	2.1
1989	S.D. City Pt. Loma Waste Water Treatment. Plant	San Diego	7.3	< 0.1	0.30	1.1
2003	Goal Line (6)	Escondido	7.0	< 0.1	< 0.1	0.06
1989	General Dynamics / Kearny Villa Rd (7)	San Diego	6.5	0.53	0.05	0.3
1993	Solar Turbines / Pacific Hwy (1)	San Diego	6.1	< 0.1	< 0.1	3.3
2004	Space & Naval Warfare Systems (11)	San Diego	6.1	< 0.1	< 0.1	0.8
1989	Kelco/Div. Merck & Co. Inc.	San Diego	6.0	0.10	0.40	0.2
1993	Superior Ready Mix / Canyon Rock (1)	San Diego	5.6	< 0.1	< 0.1	0.47
1993	USN Amphibious Base (1, 8)	Coronado	5.3	< 0.1	< 0.1	1.3
1993	Signet Armorlite (1, 8)	San Marcos	4.6	< 0.1	< 0.1	0.47
1994	Senior Flexonics, Ketema Division (8)	El Cajon	4.5	< 0.1	0.02	4.24
1989	Sony	San Diego	4.5	< 0.1	0.09	0.1
1993	Hanson Aggregates/Nelson & Sloan/7 <sup>th</sup> & Main (1)	Chula Vista	4.2	< 0.1	< 0.1	< 0.1
1989	Vulcan / CALMAT Co. / Hwy 76	Pala	4.2	< 0.1	0.10	< 0.1

Table 4: Health Risk Assessment (HRA) Results - Continued

HRA Evaluation Period	Facility		Max. Lifetime Cancer Risk per million (2)	Lifetime Cancer Burden (3)	Chronic THI (4)	Acute THI (5)
2005	USMC Miramar / USN Miramar	San Diego	4.2	0.3	< 0.1	< 0.1
1989	ARCO	San Diego	4.0	< 0.1	< 0.1	0
1993	Hanson Aggregates / Sim J. Harris (1)	San Diego	3.9	< 0.1	< 0.1	< 0.1
1989	Palomar Airport Landfill (10)	Carlsbad	3.9	< 0.1	< 0.1	< 0.1
1993	Hanson Aggregates/H.G. Fenton/East County Mtls (1)	El Cajon	3.7	< 0.1	< 0.1	0.1
1989	Bonsall Landfill (10)	Vista	3.7	< 0.1	< 0.1	< 0.1
1993	Wyroc (1)	Vista	3.6	< 0.1	< 0.1	0.13
1989	Equillon Enterprises / Shell Oil Co / Mission Rd	San Diego	3.3	< 0.1	< 0.1	0
1989	Vulcan / CALMAT Co. / Friars Rd	San Diego	3.3	< 0.1	0.14	0.3
1993	Hanson Aggregates / Nelson & Sloan / Tri Way (1)	Lakeside	3.1	< 0.1	< 0.1	0.1
1989	Knight & Carver Inc. / Hancock St (7)	San Diego	2.8	< 0.1	< 0.1	0.5
1993	Hanson Aggregates / H.G. Fenton / Carrol Cyn. (1)	San Diego	2.6	< 0.1	< 0.1	< 0.1
1989	Southern California Edison Co.	San Onofre	2.2	< 0.1	< 0.1	< 0.1
2004	United Airlines (6)	San Diego	2.2	< 0.1	< 0.1	0.11
1993	Hanson Aggregates/Nelson & Sloan/Birch Quarry (1)	Chula Vista	2.1	< 0.1	< 0.1	0.1
1989	Duke Energy / SDG&E / South Bay Plant	Chula Vista	2.1	< 0.1	< 0.1	0.34
2003	Neptune Society (11)	El Cajon	2	< 0.1	0.7	0.9
1993	Frazer Paint (1)	San Diego	1.8	< 0.1	0.5	0.5
1989	UCSD Campus	San Diego	1.8	< 0.1	< 0.1	0.4
2003	Veterans Administration Hospital (6)	San Diego	1.8	< 0.1	< 0.1	0.34
1989	USMC Base/Camp Pendleton	Pendleton	1.7	< 0.1	0.14	0.64
1993	Asphalt Inc. (1)	Lakeside	1.3	< 0.1	< 0.1	< 0.1
1989	Vulcan / CALMAT Co. / Black Mountain Rd	San Diego	1.3	< 0.1	0.20	0.4
1994	Ogden Power Pacific	Chula Vista	1.0	< 0.1	0.92	0.21
2005	USN Point Loma Naval Complex	San Diego	1.0	< 0.1	< 0.1	< 0.1
1989	Cabrillo Power / SDG&E / Encina Plant	Carlsbad	0.9	< 0.1	< 0.1	0.1
2005	USN Navy Station, 32 <sup>nd</sup> St.	San Diego	0.9	< 0.1	< 0.1	0.53
1989	Cabrillo Power / SDG&E / 32 <sup>nd</sup> St. Naval Station (7)	San Diego	0.8	< 0.1	< 0.1	< 0.1
1989	Texaco Refining & Marketing, Inc.	San Diego	0.8	< 0.1	< 0.1	0
1993	Teledyne Ryan Aeronautical (1, 7)	San Diego	0.79	< 0.1	< 0.1	0.12
1993	Hanson Aggregates / South Coast Materials (1)	Carlsbad	0.7	< 0.1	< 0.1	< 0.1
2003	Cabrillo Power II LLC - Kearny Mesa (6)	San Diego	0.6	< 0.1	< 0.1	0.13
1989	Chevron USA Inc.	San Diego	0.60	< 0.1	< 0.1	0
1993	Deutsch Co. (1)	Oceanside	0.4	< 0.1	< 0.1	< 0.1
2004	Pacific Gas Turbine (6)	San Diego	0.3	< 0.1	< 0.1	0.29
1989	Cabrillo Power / SDG&E / Naval Training Center (7)	San Diego	0.2	< 0.1	< 0.1	< 0.1
1999	Chromalloy San Diego	El Cajon	0.165	< 0.1	< 0.1	< 0.1
1989	San Diego State University	San Diego	0.1	< 0.1	< 0.1	0.5
1989	Cabrillo Power/SDG&E Company/USN North Island (7)	Coronado	0.05	< 0.1	< 0.1	< 0.1

1. Indicates this facility updated a 1989 health risk assessment in accordance with District Rule 1210.
2. This column reports the maximum lifetime excess cancer risk estimate at an occupational or residential receptor (whichever is greater) approved by the District. The maximum estimated risk generally is possible at only one location. All other locations show lower risks. This estimate assumes that a person resides at the location of maximum impact 24 hours per day, 365 days per year, for 70 years of exposure or a person works at the location of maximum impact 8 hours per day, 245 days per year, for 40 years of exposure. Actual cancer risk will likely be less.
3. Excess cancer burden is an estimate of the increased number of cancer cases in a population (i.e., all census tracts within or partially within the one in one million isopleth) as a result of exposure to emitted substances. Actual cancer burden will likely be less.
4. Chronic total health hazard index (THI) is the sum of the ratios of the average annual exposure level of each compound to the compound's reference exposure level (REL). Actual chronic THI will likely be less.
5. Acute THI is the sum of the ratios of the maximum one-hour exposure level of each compound to the compound's REL. Actual acute THI will likely be less.
6. HRA results are points of maximum impact. Cancer risk was < 10 in one million, chronic THI was < 1 and acute THI was < 1 at all residential, occupational, and commercial locations.

7. This facility has ceased operations.
8. This facility successfully implemented a risk reduction program (see Table 7).
9. The cancer and chronic HRA results are based on 1993 HRA. The acute result is based on an updated 1998 acute HRA.
10. This facility has installed landfill gas collection and control systems after the HRA evaluation period.
11. HRA results are from District in-house risk evaluation.
12. This facility has a more recent HRA that has been approved by the District.

### **Public Notification and Risk Reduction**

Once a HRA has been approved, the Air Toxics “Hot Spots” program requires facilities with risks over specified levels to provide public notice to all exposed persons. In addition, facilities with significant risks are required to reduce risks below the significant risk levels within five years. The California Health and Safety Code does not define “significant risk.” The District, in consultation with interested parties, established public notification and significant risk levels (as well as public notification and risk reduction procedures) in District Rule 1210. These levels are presented in Table 5.

**Table 5: Public Notification and Significant Risk Levels**

	<b>Public Notification Level</b>	<b>Significant Risk Level</b>
Maximum Incremental Cancer Risk	10	100
Cancer Burden	1.0	1.0
Total Acute Noncancer Health Hazard Index	1.0*	1.0*
Total Chronic Noncancer Health Hazard Index	1.0*	1.0*
* A value greater than 1.0 but less than 5.0 would not trigger public notification or risk reduction requirements if the Air Pollution Control Officer determines, after consultation with OEHHA, that adverse public health effects are unlikely to occur at the levels of exposure estimated in the approved public health risk assessment.		

In establishing public notification procedures, the District considered input from the California Air Pollution Control Officers Association’s *Air Toxics "Hot Spots" Program Public Notification Guidelines* (October 1992), CARB guidance, other regulatory precedents, public workshops, and a local public notification committee consisting of representatives from the District, local industry and industry groups, academic institutions, and environmental organizations. The procedures are generally consistent with procedures adopted by other California air districts.<sup>1</sup>

Facilities required to perform public notification must distribute notices to each household and business that may be exposed to potential risks exceeding the District's public notification level. Notifications must be issued biennially until the facility demonstrates to the District that it has reduced the potential health risk below the notification thresholds.

As of May 2010, 19 facilities with estimated risks above public notification levels were required to inform the public of their most recent approved HRA results. Based on the response from the

---

<sup>1</sup> The South Coast Air Quality Management District has revised its cancer risk mitigation threshold to 25 in one million.

public, four facilities (Flame Spray Inc., National Steel & Shipbuilding, Palomar Plating and Senior Flexonics, Ketema Division) were required to hold public meetings to provide further information regarding their emissions and their HRA results.

Public notification is required biennially based on the most recent approved HRA until it is demonstrated that potential health risks have been reduced below public notification levels. Table 6 lists the facilities currently required to conduct biennial public notification.

**Table 6: Facilities Required to Conduct Biennial Public Notification**

<b>HRA Evaluation Period</b>	<b>Facility</b>	<b>Most Recent Notification Date</b>
2005	National Steel & Shipbuilding San Diego	2010
2005	USN Air Station / North Island* Coronado	2010
2003	Southern California Plating San Diego	2010
2003	Pacific Ship Repair San Diego	2010
2005	Vision Systems El Cajon	2010
2005	S.D. City – Pump Station 2 San Diego	2009
2003	Kyocera America San Diego	2010
2005	S.D. City – Miramar Landfill San Diego	2010

\* USN Air Station North Island successfully implemented a risk reduction plan for acute risk. The acute HRA result is based on an updated 1998 acute HRA. USN Air Station North Island is required to conduct public notifications for potential cancer risk from a gas station. The cancer and chronic HRA results are based on 1993 HRA.

Under Rule 1210, facilities with potentially significant public health risks must reduce those risks below significant risk levels within five years of the approval of a risk reduction plan. Of the 84 approved HRAs under the "Hot Spots" program, ten currently active facilities had estimated risks above the significant risk mitigation levels. Eight facilities shown in Table 7 prepared and implemented a risk reduction plan within five years. Two facilities have been recently informed of their risk reduction requirements. All but two facilities (USN Air Station, North Island and Southern California Plating) successfully reduced their toxic emissions below public notification levels. The USN Air Station reduced their acute risks substantially but must continue biennial public notification because of residual cancer risks. As of May 2009, Southern California Plating completed the process of implementing a risk reduction plan.

**Table 7: Facilities Required to Implement a Risk Reduction Plan**

HRA Evaluation Period	Facility	
1993	Chem-tronics, Inc.*	El Cajon
1995	Flame Spray Inc.**	San Diego
1994	Hues Metal Finishing*	San Marcos
1994	Senior Flexonics, Ketema Aerospace and Electronics Division*	El Cajon
1993	Signet Armorlite*	San Marcos
1993 / 1998	USN Air Station / North Island***	Coronado
1993	USN Amphibious Base*	Coronado
2003	Southern California Plating****	San Diego
2005	S.D. City – Miramar Landfill	San Diego
2005	Vision Systems	El Cajon

\* The facility’s risk reduction plan resulted in risks that are below the public notification levels.

\*\* Flame Spray has a facility-wide usage / emission limits incorporated into all their metal spraying permits which will keep total cancer risk to be less than 10 in a million, total chronic health hazard index less than 1 and total acute health hazard index less than 1. All District permitted thermal spraying operations are controlled by high efficiency particulate air filters.

\*\*\* USN Air Station North Island successfully implemented a risk reduction plan for acute risk. The acute HRA result is based on an updated 1998 acute HRA. USN Air Station North Island is required to conduct public notifications for potential cancer risk. The cancer and chronic HRA results are based on 1993 HRA.

\*\*\*\* Southern California Plating has a permit condition which has chromium usage limits and will ensure 100% capture efficiency on the paint spraying permits.

**Recent And Expected Changes To The Program**

Changes to the Air Toxics "Hot Spots" Act in 1992 required that OEHHA develop risk assessment guidelines for the Air Toxics "Hot Spots" Program, including a "likelihood of risks" approach to risk assessment. OEHHA has developed and published a series of Technical Support Documents for the determination of: (1) Acute Toxicity Exposure Levels, (2) Cancer Potency Factors, (3) Chronic Toxicity Exposure Levels, (4) Exposure Assessment and Stochastic Analysis, and (5) *The Air Toxics Hot Spots Program Guidance Manual for Preparation of Health Risk Assessments*. To supplement OEHHA's guidelines, CARB provided *Recommended Interim Risk Management Policy for Inhalation-Based Residential Cancer Risk*.

CARB adopted revisions to the *Emissions Inventory Criteria and Guidelines Report* regulation effective on September 26, 2007. These revisions allow temporary exemptions to some diesel engines from the “Hot Spots” Program, which will allow coordination with CARB’s diesel engine regulations.

On December 2008, OEHHA approved six new 8-hour non-cancer reference exposure levels (REL) and revised the acute and/or chronic non-cancer health data for the same six pollutants. OEHHA also presented age sensitive adjustments in their technical support document. As of May 2010, OEHHA is still in the process of revising the HRA Guidelines to account for the the 8-hour RELs, the age sensitive adjustments and updates to the cancer potency.

## **QUALITY OF THE EMISSIONS INVENTORY DATA**

The District's website contains approved emission estimates for each facility inventoried. These emissions were determined using several different techniques, depending on the specific processes being evaluated.

Uniform and comprehensive toxic air contaminant guidelines do not exist for many types of processes. In these cases, emissions are estimated by conducting source tests, reviewing previous evaluations of similar operations, comparing materials used, or applying engineering judgment. Accordingly, the quality of emission estimates varies and a direct comparison of relative emissions between facilities may be inappropriate.

In the early stages of the program, hundreds of California facilities undertook similar inventory efforts concurrently, placing a tremendous demand on consultants and source testing firms. At the time, few people had extensive experience inventorying and testing air toxics. For some compounds and processes, test methods had not yet been developed and alternative techniques for estimation had to be used. Where source testing was used, results were sometimes inconsistent between facilities or between several tests of the same exhaust stack. Some test results conflicted with known process information, e.g., stack emissions of trace metals versus fuel composition data.

Some of these problems were related to the initial program startup and have been minimized as experience has been gained. Other problems are inherent to measuring very small quantities of trace compounds and applying emission results from tests conducted over relatively few hours to a whole year of operation. Also, where the District had reason to suspect actual emissions of a toxic air contaminant reported as non-detectable, the District used the CARB-recommended practice of estimating the emission based on one-half the detection limit. Accordingly, consideration should be given to these issues when comparing emission estimates and any inferred health risks. The accuracy of the reported values can vary widely and current emission estimates may differ greatly from previously reported values.

## **AIR TOXICS CONTROL MEASURES**

The objectives of the Air Toxics "Hot Spots" program are to develop a complete inventory of toxic air contaminant emission sources in California, to assess the potential public health risks associated with those emissions, and to require facilities with significant risks to reduce these risks to levels below the significant risk level. At the same time, existing and new programs at the local, state, and federal levels also reduce air toxics emissions.

At the state level, CARB continues to implement an ongoing program to identify toxic air contaminants, assess their public health risks, and develop air toxics control measures to reduce toxic emissions from specific source categories statewide. Under this program known as AB 1807, or the Tanner program, CARB in cooperation with OEHHA develops priorities for identification of toxic compounds, investigates and documents the adverse health risks posed by such compounds, identifies statewide sources of emissions, evaluates public health risks and available control technologies, and approves statewide emission control measures. Local air districts then must implement the state-approved emission reduction measures.

At the federal level, the 1990 Clean Air Act (CAA) Amendments greatly expanded the Environmental Protection Agency (EPA) program to develop nationwide control measures for air toxics. The Federal CAA now lists 188 substances as hazardous air pollutants and requires EPA to develop control measures for significant sources of these pollutants. Many of these substances are included in the emissions being inventoried under the Air Toxics "Hot Spots" program. In addition, state and local permitting agencies are implementing National Emissions Standards for Hazardous Air Pollutants (NESHAPs) for many large and small sources of hazardous air pollutants. Under state law, newly adopted federal NESHAPs regulations become state Airborne Toxic Control Measures (ATCMs) automatically unless the state elects to adopt a separate regulation. Table 8 presents recent and proposed State ATCMs and Federal NESHAPs.

**Table 8: Recent and Proposed ATCMs and NESHAPs Applicable in San Diego County**

ATCM / NESHAP	Primary Pollutant	Current Status	Estimated Number of Affected Facilities in San Diego County
Regulation for Mobile Cargo Handling Equipment at Ports and Intermodal Rail Yards	Diesel Particulate Matter	Revisions Effective December 3, 2009	All equipment at the County's ports
ATCM for Auxiliary Diesel Engines Operated on Ocean-Going Vessels At-Berth in a California Port	Diesel Particulate Matter and NOx	Effective January 2, 2009	All harbor craft at the Port of San Diego
ATCM for Fuel Sulfur and Other Operational Requirements for Ocean-Going Vessels	Diesel Particulate Matter, NOx, and SOx	Effective July 1, 2009	All vessels within 24 nautical miles of County's coastline
ATCM for Diesel Engines on Commercial Harbor Craft	Diesel Particulate Matter, NOx, and SOx	Effective January 1, 2009	All vessels within 24 nautical miles of County's coastline
ATCM for Diesel Engines on Commercial Harbor Craft	Diesel Particulate Matter, NOx, and SOx	Proposed Revisions	TBD
Vessel Speed Reduction for Ocean-Going Vessels	Diesel Particulate Matter, CO2, NOx, and SOx	Proposed	TBD
ATCM for Stationary Compression Ignition Engines	Diesel Particulate Matter	Proposed Revisions	TBD
NESHAP for Reciprocating Internal Combustion Engines	Formaldehyde	Effective January 18, 2008	New sources
NESHAP for Hospital Ethylene Oxide Sterilizers	Ethylene Oxide	Effective December 29, 2008	5
NESHAP for Bulk Terminal & Pipeline Facilities	Benzene	Effective January 10, 2008	3
NESHAP for Gasoline Distributing Facilities	Benzene	Effective January 9, 2008	Approximately 1200

Table 8: Recent and Proposed ATCMs and NESHAPs Applicable to San Diego County - Continued

<b>ATCM / NESHAP</b>	<b>Primary Pollutant</b>	<b>Current Status</b>	<b>Estimated Number of Affected Facilities in San Diego County</b>
NESHAP for Paint Stripping and Automotive and Miscellaneous Surface Coating Operations	Methylene Chloride, Cadmium, Chromium, Lead, Manganese, and Nickel	Effective January 9, 2008	More than 400
NESHAP for Chemical Manufacturing Industry	Various Hazardous Air Pollutants	Effective October 29, 2009	TBD
NESHAP for Plating & Polishing Operations	Cadmium, Chromium, Lead, Manganese, and Nickel	Effective July 1, 2008	TBD
NESHAP for Metal Fabrication & Finishing	Cadmium, Chromium, Lead, Manganese, and Nickel	Effective July 24, 2008	TBD
NESHAP for Ferroalloys Production Facilities	Various Hazardous Air Pollutants	June 22, 2009	TBD
NESHAP for Aluminum, Copper, and Other Nonferrous Foundries	Various Hazardous Air Pollutants	Effective June 27, 2011	TBD
NESHAP for Asphalt Processing and Asphalt Roofing Manufacturing	Various Hazardous Air Pollutants	December 2, 2009	TBD
NESHAP for Chemical Preparations Industry	Chromium, Lead, Manganese, and Nickel	December 30, 2009	TBD
NESHAP for Paints and Allied Products Manufacturing	Benzene, Methylene Chloride, Cadmium, Chromium, Lead, and Nickel	June 10, 2010	TBD
NESHAP for Prepared Feeds Manufacturing	Chromium and Manganese	January 5, 2010	TBD

TBD: To be determined. The District is in process of notifying affected sources.

CARB is developing diesel particulate matter control measures to reduce toxic diesel particulate matter emissions from mobile sources. These control measures will affect public diesel fleets, trash trucks, off-road vehicles, cargo handling equipment, and ocean-going vessels. These control measures will significantly reduce diesel particulate emissions by requiring the fleet average to meet a low particulate matter emission threshold or requiring the installation of diesel particulate filters or diesel oxidation catalysts as best available control technology. Diesel particulate filters and diesel oxidation catalysts reduce particulate emissions by 30% to 85%. Because diesel particulate matter represents such a high percentage of ambient background risk from toxic air contaminants (see the following section) these control measures are expected to have significant air quality benefit.

The federal CAA required EPA to develop a strategy to control emissions of hazardous air pollutants from area sources in urban areas. EPA developed this strategy and it includes a list of 33 air toxics that pose the greatest potential health threat in urban areas and 70 source categories that represent 90 percent of the emissions from these air toxics. Of these 70 area source categories, 53 have been regulated to date and the remaining area source standards must be promulgated pursuant to court-ordered deadlines. Table 8 contains the area source NESHAPs that have been recently promulgated under the Federal CAA and affect sources in San Diego County. “Area sources” are those facilities that emit less than 10 tons per year of any single hazardous air pollutant or less than 25 tons per year of a combination of hazardous air pollutants.

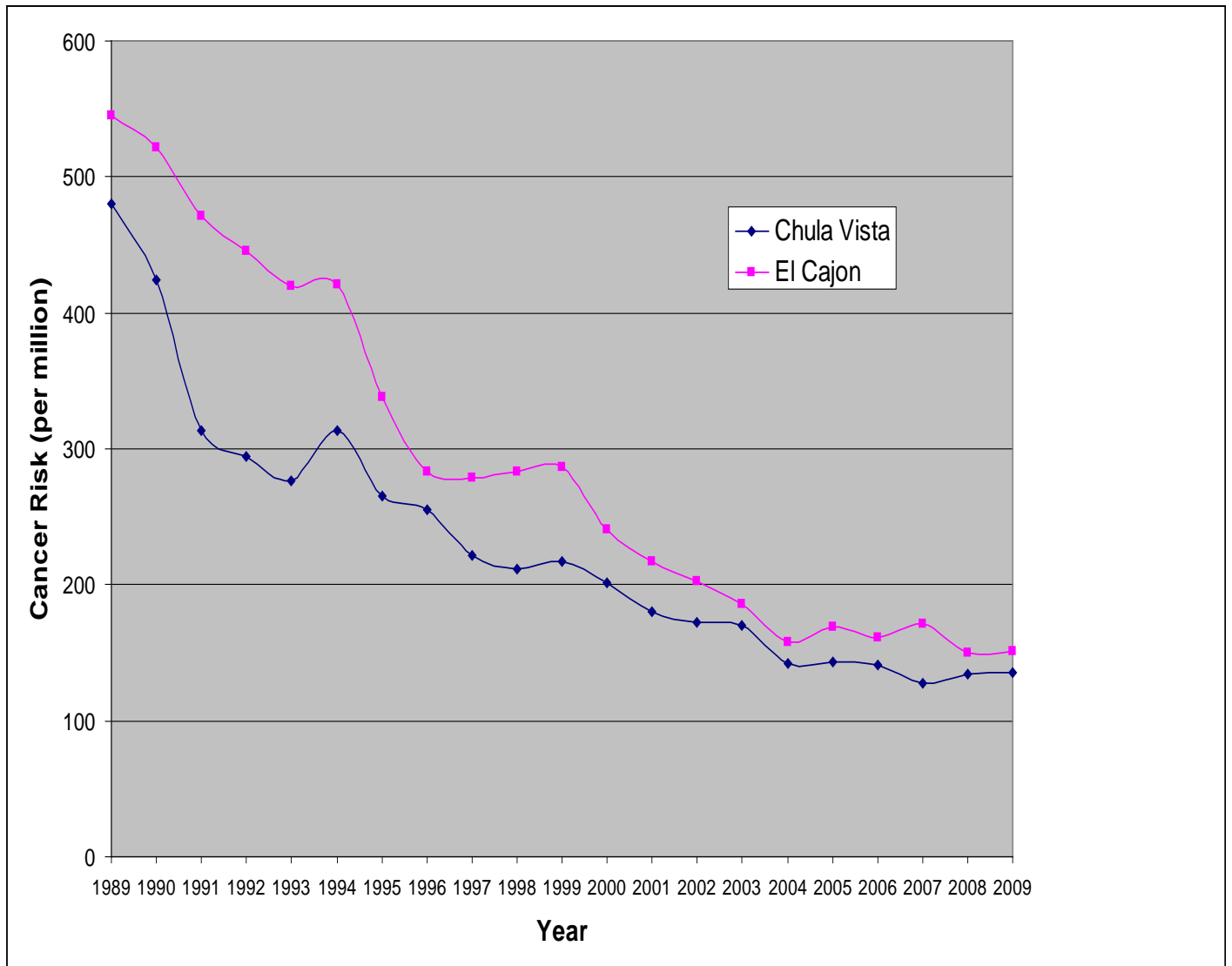
## **TOXIC AIR CONTAMINANTS AMBIENT MONITORING**

The District started sampling for toxic air contaminants at the El Cajon and Chula Vista monitoring stations in the mid-1980s. This work, which is carried out in collaboration with CARB, provides information on ambient levels of a number of organic and inorganic toxic compounds. Integrated 24-hour air samples are performed once every twelve days by the District. CARB staff analyze the samples and validate the data. The CARB publishes detailed toxic sampling results from all California monitoring sites on its website (<http://www.arb.ca.gov/adam/toxics/sitesubstance.html>). A summary of the CARB-approved results for the two San Diego County air toxic monitoring stations is provided in Figure 1.

Excluding diesel particulates, a 72% reduction in the ambient incremental cancer risk from air toxics has been measured in Chula Vista and a 73% reduction in El Cajon since 1989 as shown in Figure 1. The estimated risk was 135 in one million for Chula Vista and 150 in one million for El Cajon in 2008, down from 481 and 545 in one million, respectively, in 1989.

Diesel particulates also contribute significantly to ambient risk levels. Although a method does not exist to directly monitor diesel particulate concentrations, CARB has suggested methods that can be used to estimate diesel concentrations. Based on CARB estimates, diesel particulate emissions could add an additional 420 in one million to the ambient risk levels in San Diego County. CARB estimates that risk from diesel particulate decreased by about 50% from 870 in one million since 1990.

**Figure 1 – Toxic Air Contaminant Incremental Cancer Risk  
(excluding diesel particulate matter from engines)**



## CONCLUSIONS

Industrial facilities still emit large quantities of toxic air contaminants although emissions from industrial sources have been reduced by approximately 85% since 1989. Based on the most recent estimates, those sites inventoried emit more than 2 million pounds of toxic air contaminants annually (down from approximately 5.4 million pounds in 1998). Motor vehicles and area and natural sources are also key contributors of toxic air contaminants, emitting more than 62.5 million pounds as reported by CARB's 2008 CTI. Tables 1 and 2 provide the current inventories of toxic pollutants for stationary, mobile, area, and natural sources. The majority of local facilities are in compliance with current District emission standards, which now focus on both criteria air pollutants (e.g., volatile organic compounds, oxides of nitrogen, particulate matter) and toxic air contaminants. Estimated emissions of toxic air contaminants from industrial sources have decreased by approximately 10.7 million pounds since 1989.

Current and future air quality programs at the local, state, and federal levels will further reduce toxic air contaminants emissions. Measures to reduce vehicle trips and miles traveled will reduce toxic emissions which result from the burning of gasoline. Measures to reduce emissions of volatile organic compounds as ozone precursors will also decrease emissions of toxic volatile organic compounds.

State ATCMs are reducing emissions of diesel particulate matter from engines, perchloroethylene from dry cleaning operations, hexavalent chromium from electroplating operations, hexavalent chromium and nickel from metal deposition operations, and toxic metals from metal melting operations. Federal emission control programs have produced dramatic emission reductions of chlorofluorocarbons and methyl chloroform. The District also requires best available control technology for many new and modified sources of toxic air contaminants.

Approximately 10.7 million pounds of industrial emission reductions have been quantified in San Diego County between 1989 and 2008. Ongoing implementation of the toxic air contaminant control program *Air Toxics "Hot Spots" Program* will continue to reduce local public health risks associated with emissions of toxic air contaminants. Those efforts will improve information on levels of exposure and risk as well as identifying compounds, processes, and facilities that are potentially causing significant risks.

\*\*\*\*\*